

| DETAILS |   |
|---------|---|
| A.0.1   | CHIMNEY CAP DETAILS                     |
| B.0.1   | CHIMNEY SADDLE DETAILS                  |
| C.0.1   | STONE TRANSITION TO ROOF                |
| C.0.2   | ROOF-WALL KICKOUT FLASHING              |
| D.0.1   | STANDARD EAVE DETAIL                    |
| D.0.2   | EAVE DETAIL W/ FREEZE BOARD             |
| E.0.1   | STONE TO WINDOW/DOOR HEADER             |
| E.0.2   | FLASHING AROUND CURVED WINDOW PERIMETER |
| E.0.3   | BACKER ROD AND SEALANT                  |
| F.0.1   | STONE TO WINDOW JAMB                    |
| F.0.2   | STONE TO DOOR JAMB                      |
| F.0.3   | ADHESIVE MEMBRANE FLASHING              |
| G.0.1   | STONE WINDOW SILL TO WOOD STUD          |
| G.0.2   | STONE WINDOW SILL TO METAL STUD         |
| G.0.3   | WINDOW SILL FLASHING                    |
| G.0.4   | DOOR SILL FLASHING                      |
| H.0.1   | STONE TO BRICK WAINSCOT                 |
| H.0.2   | STONE WAINSCOT TRANSITION               |
| H.0.3   | STONE TO WOOD TRIM                      |
| H.0.4   | WATERTABLE SET WITH ANGLE SUPPORT       |
| H.0.5   | WATERTABLE SET WITH MASONRY             |
| H.0.6   | WATERTABLE SET INTO BRICK               |
| I.0.1   | STONE OVER SHEATHED WALL                |
| I.0.2   | STONE OVER RIGID INSULATION WALL        |
| I.0.3   | STONE OVER OPEN STUD                    |
| I.0.4   | STONE OVER METAL FRAMING                |
| I.0.5   | METAL FRAMING RIGID INSULATION          |
| I.0.6   | OPEN STUD FRAMING METAL STUD            |
| I.0.7   | STONE OVER CLEAN CMU WALLS              |
| I.0.8   | STONE OVER PRECAST AND TILT UP WALLS    |
| J.0.1   | STONE W/ WEEP SCREED                    |
| J.0.2   | STONE VENEER / GRADE LINE               |
| K.0.1   | CMU WALL / STONE ON ONE SIDE            |
| K.0.2   | CMU WALL / STONE BOTH SIDES             |
| M.0.1   | INSIDE CORNER DETAIL                    |
| M.0.2   | OUTSIDE CORNER DETAIL                   |
| M.0.3   | TRANSITION STONE TO SIDING              |
| M.0.4   | COACH LIGHT TRIM                        |
| M.0.5   | COACH TRIM/DRYER VENT                   |
| M.0.6   | WATER BIBB TRIM                         |
| M.0.7   | COLUMN CONSTRUCTION                     |
| M.0.8   | EXPANSION JOINT                         |
| M.0.9   | CASTLEROCK PATTERN (070)                |
| M.0.10  | BILTMORE PATTERN (400)                  |

#### BUILDING CODES

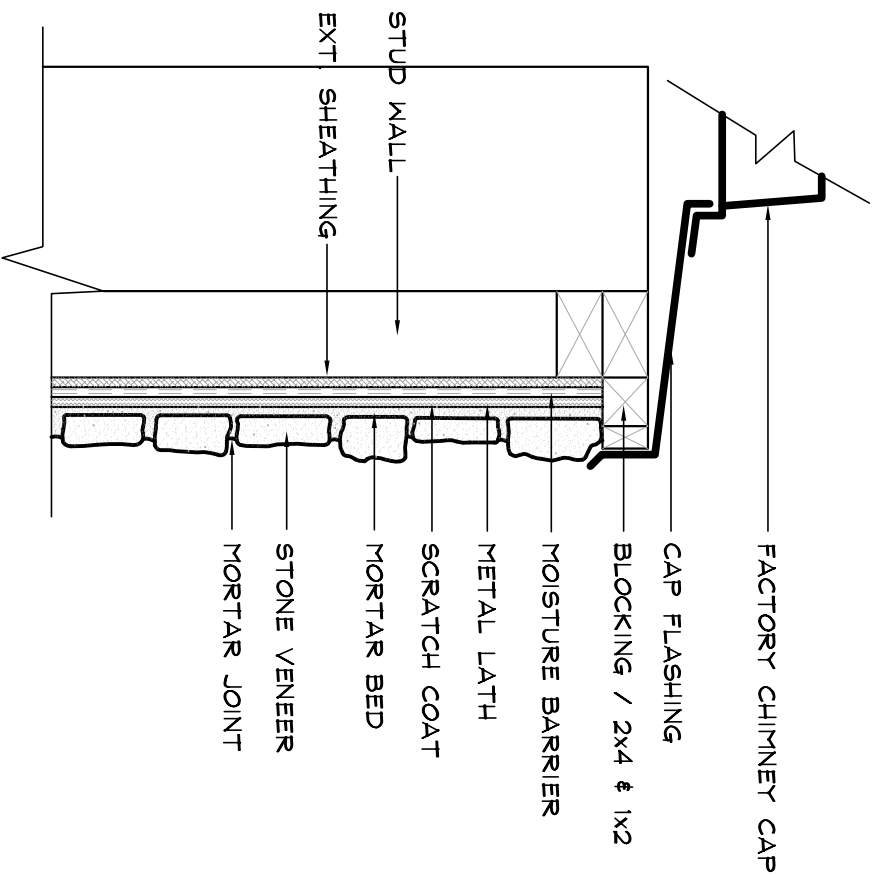
CODE REQUIREMENTS VARY FROM AREA TO AREA. CHECK CODES IN YOUR AREA ON SPECIAL REQUIREMENTS THAT MAY AFFECT YOUR INSTALLATION.

NOTE : THE FOLLOWING DIAGRAMS ARE IDEAS FOR FLASHING AND TERMINATING STONE VENEER. THEY MAY NOT APPLY TO ALL DESIGNS AND MAY REQUIRE CHANGES TO MEET LOCAL CODES OR A PARTICULAR DESIGN REQUIREMENT. CENTURION ACCEPTS NO RESPONSIBILITY OR LIABILITY FOR THE USE OF THESE DETAILS.



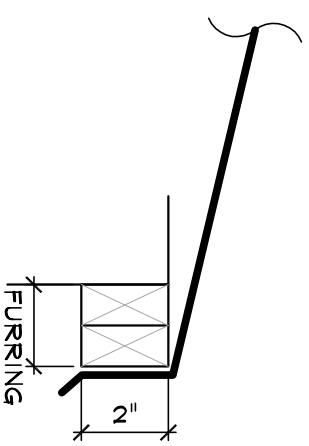
Centurion Products, Inc  
50 Van Buren Street  
Nashville, TN 37208  
www.centurionstone.com

DETAIL DRAWINGS



## CHIMNEY CAP DETAIL STONE TO CHIMNEY CAP

Specifications :



## METAL FLASHING CHIMNEY CAP

NOT TO SCALE

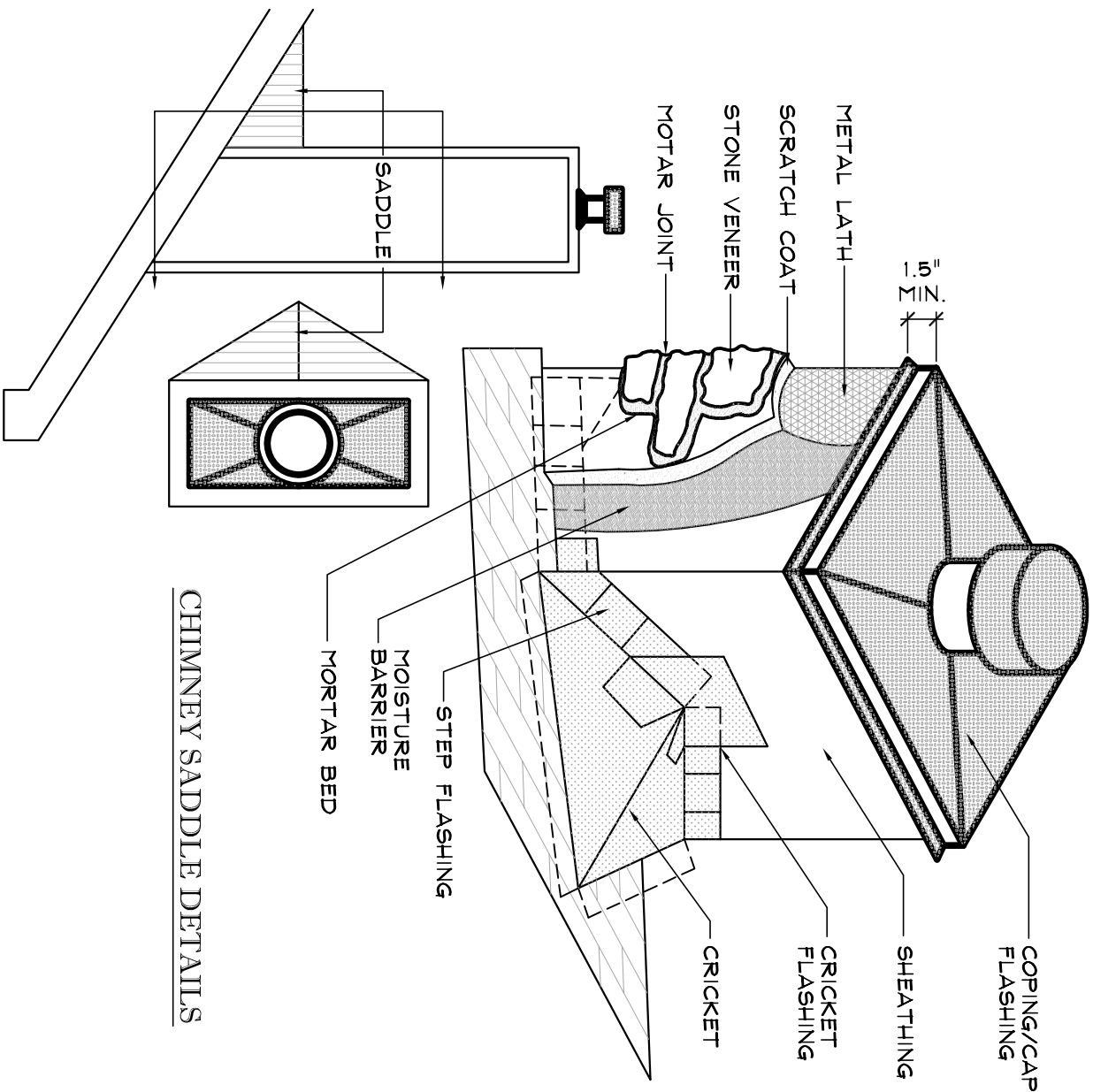


**Centurion**  
STONE

Centurion Products, Inc  
50 Van Buren Street  
Nashville, TN 37208  
[www.centurionstone.com](http://www.centurionstone.com)

CHIMNEY CAP DETAIL  
STONE TO CHIMNEY CAP

A.0.1



CHIMNEY SADDLE DETAILS

Specifications :

NOT TO SCALE

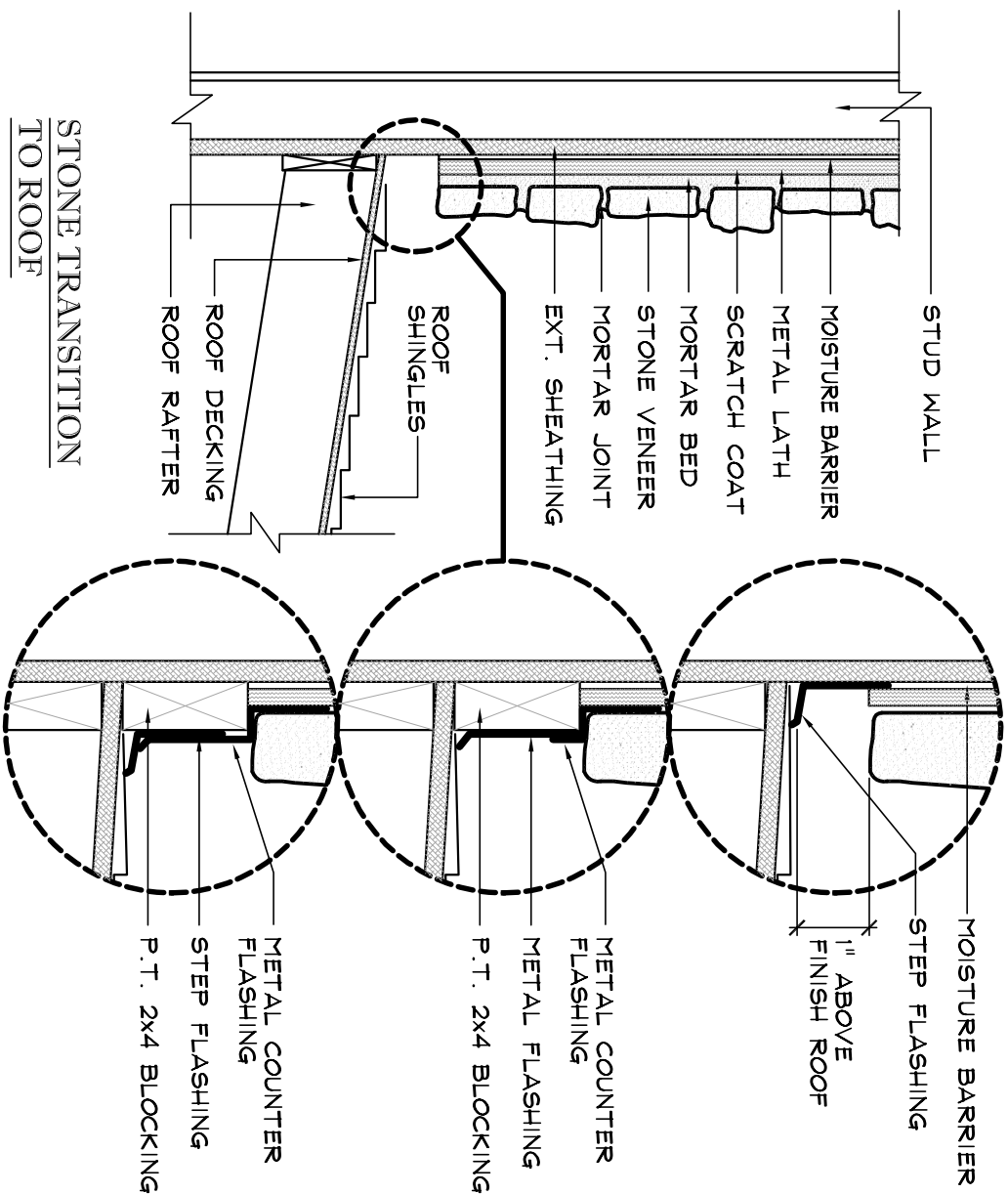


**Centurion**  
STONE

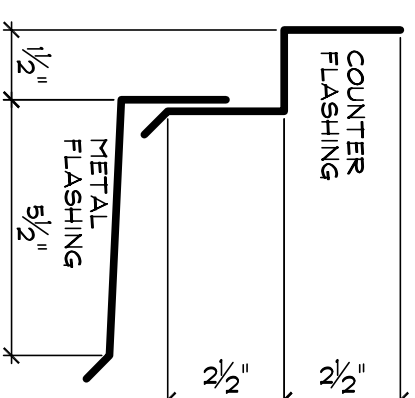
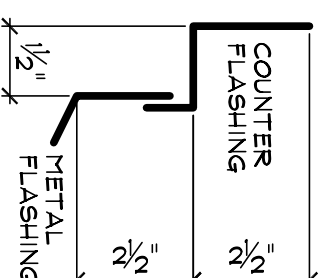
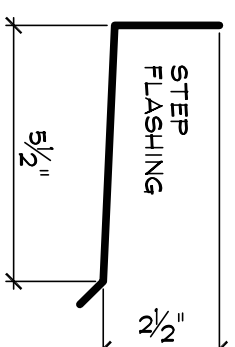
Centurion Products, Inc  
50 Van Buren Street  
Nashville, TN 37208  
[www.centurionstone.com](http://www.centurionstone.com)

CHIMNEY SADDLE DETAILS

B.0.1



Specifications :



NOT TO SCALE



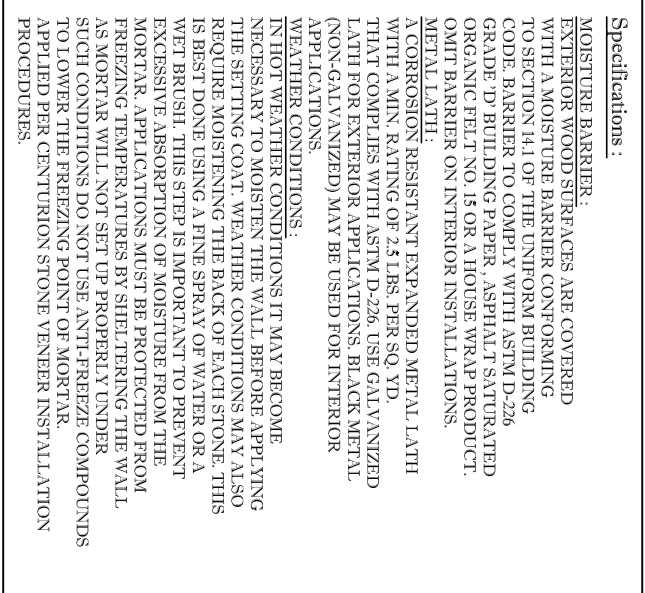
**Centurion**  
STONE

Centurion Products, Inc  
50 Van Buren Street  
Nashville, TN 37208  
[www.centurionstone.com](http://www.centurionstone.com)

STONE TRANSITION  
TO ROOF

C.0.1





NOT TO SCALE



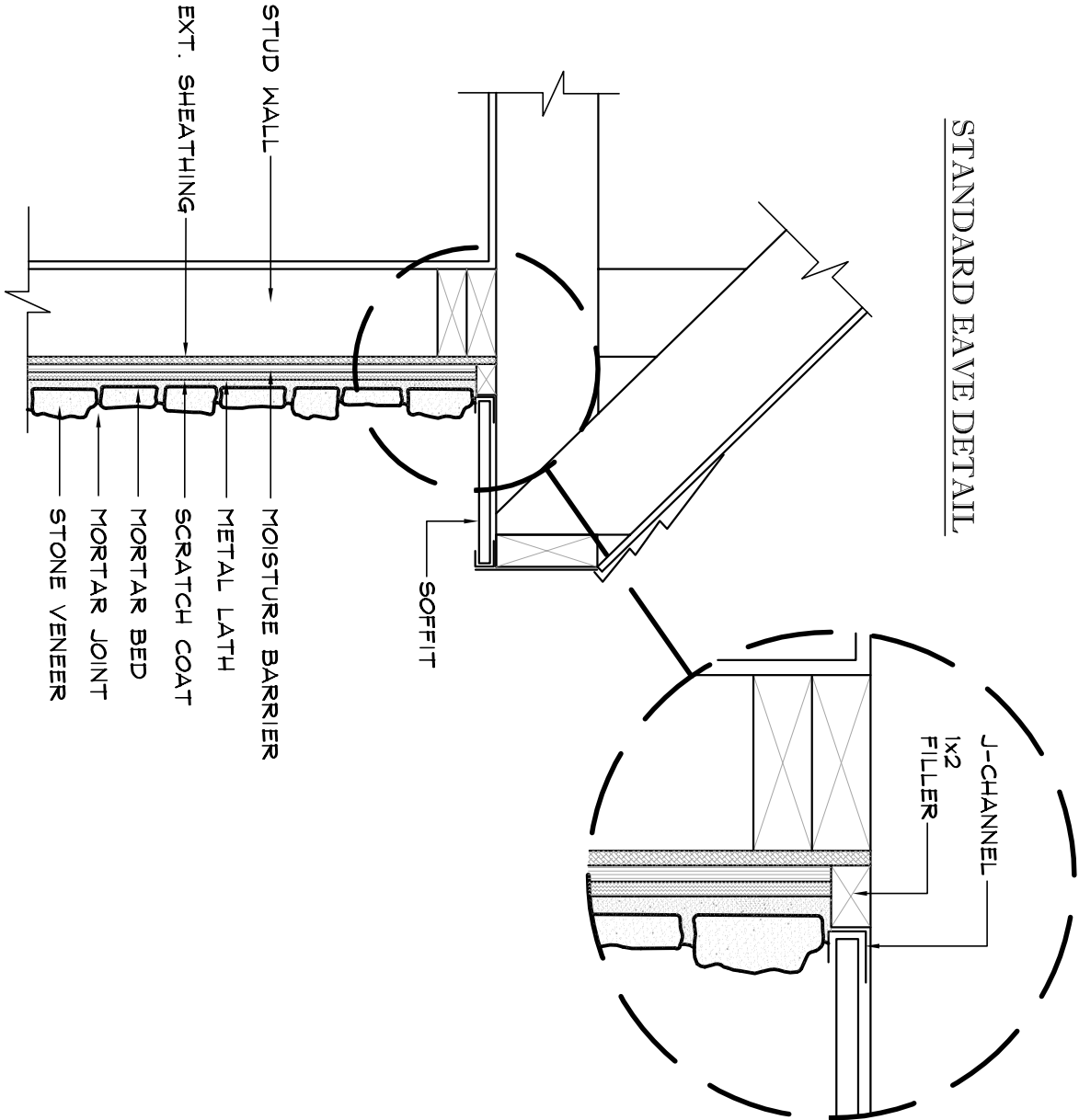
Centurion Products, Inc  
50 Van Buren Street  
Nashville, TN 37208  
www.centurionstone.com

## ROOF - WALL KICKOUT FLASHING

C.0.2

Specifications :

STANDARD EAVE DETAIL



NOT TO SCALE



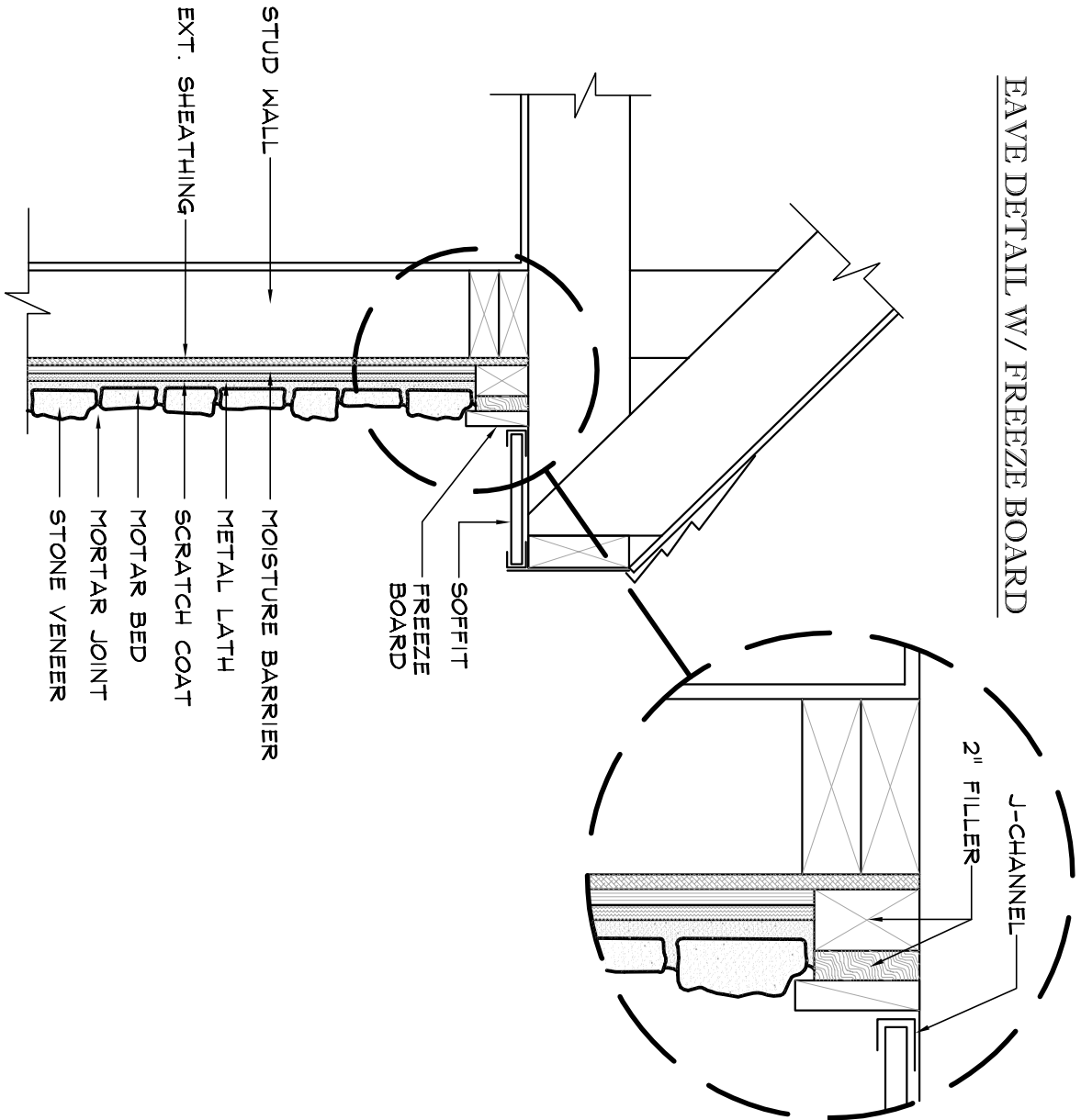
**Centurion**  
STONE

Centurion Products, Inc  
50 Van Buren Street  
Nashville, TN 37208  
[www.centurionstone.com](http://www.centurionstone.com)

STANDARD EAVE DETAIL

D.0.1

EAVE DETAIL W/ FREEZE BOARD



Specifications :

NOT TO SCALE



**Centurion**  
STONE

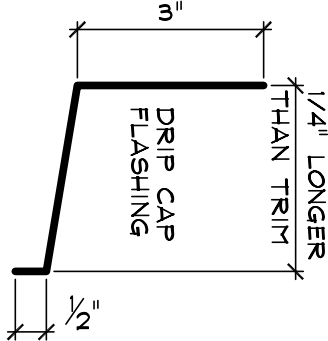
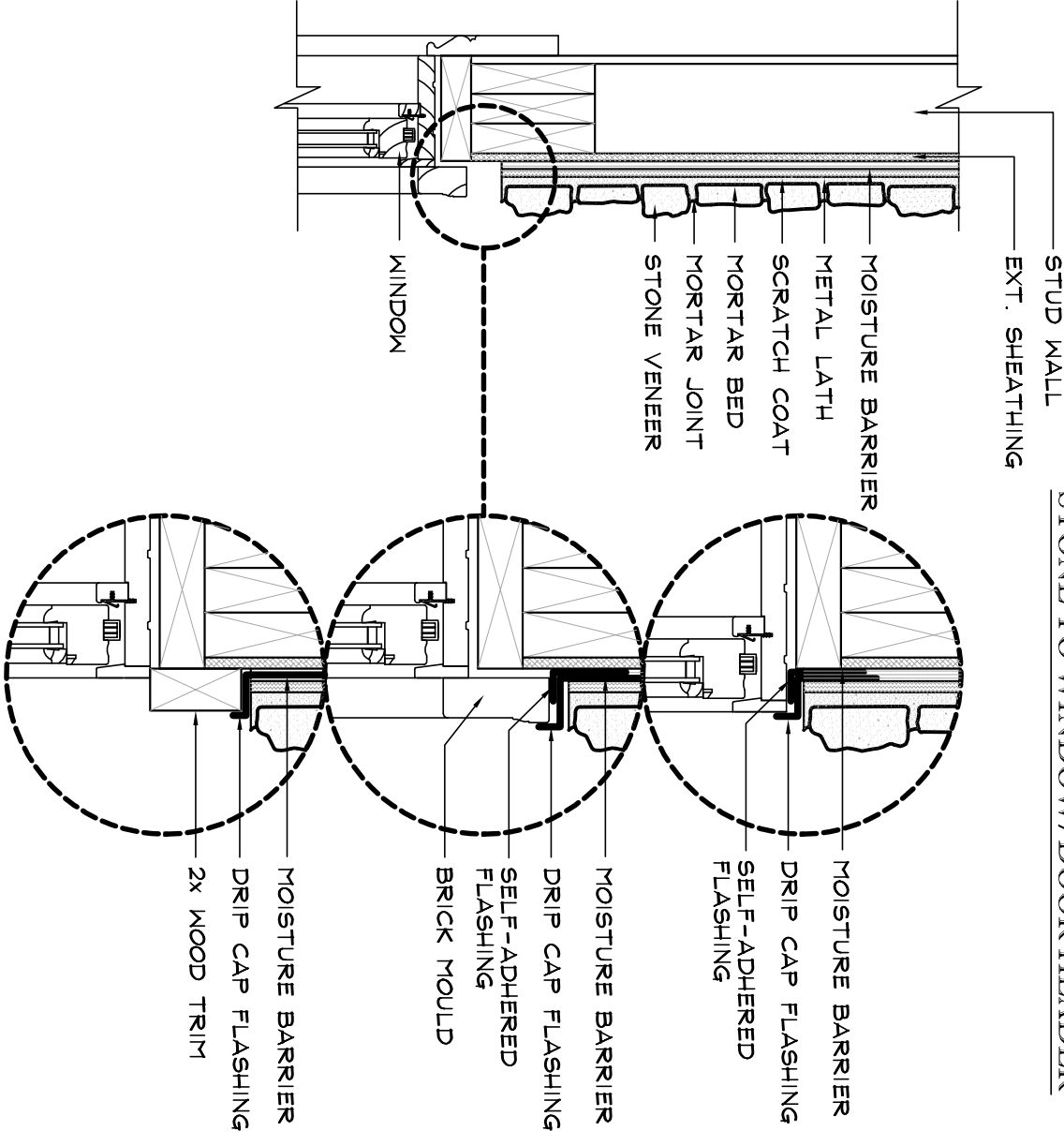
Centurion Products, Inc  
50 Van Buren Street  
Nashville, TN 37208  
[www.centurionstone.com](http://www.centurionstone.com)

EAVE DETAIL W/ FREEZE BOARD

D.0.2

Specifications :

STONE TO WINDOW/DOOR HEADER



NOT TO SCALE



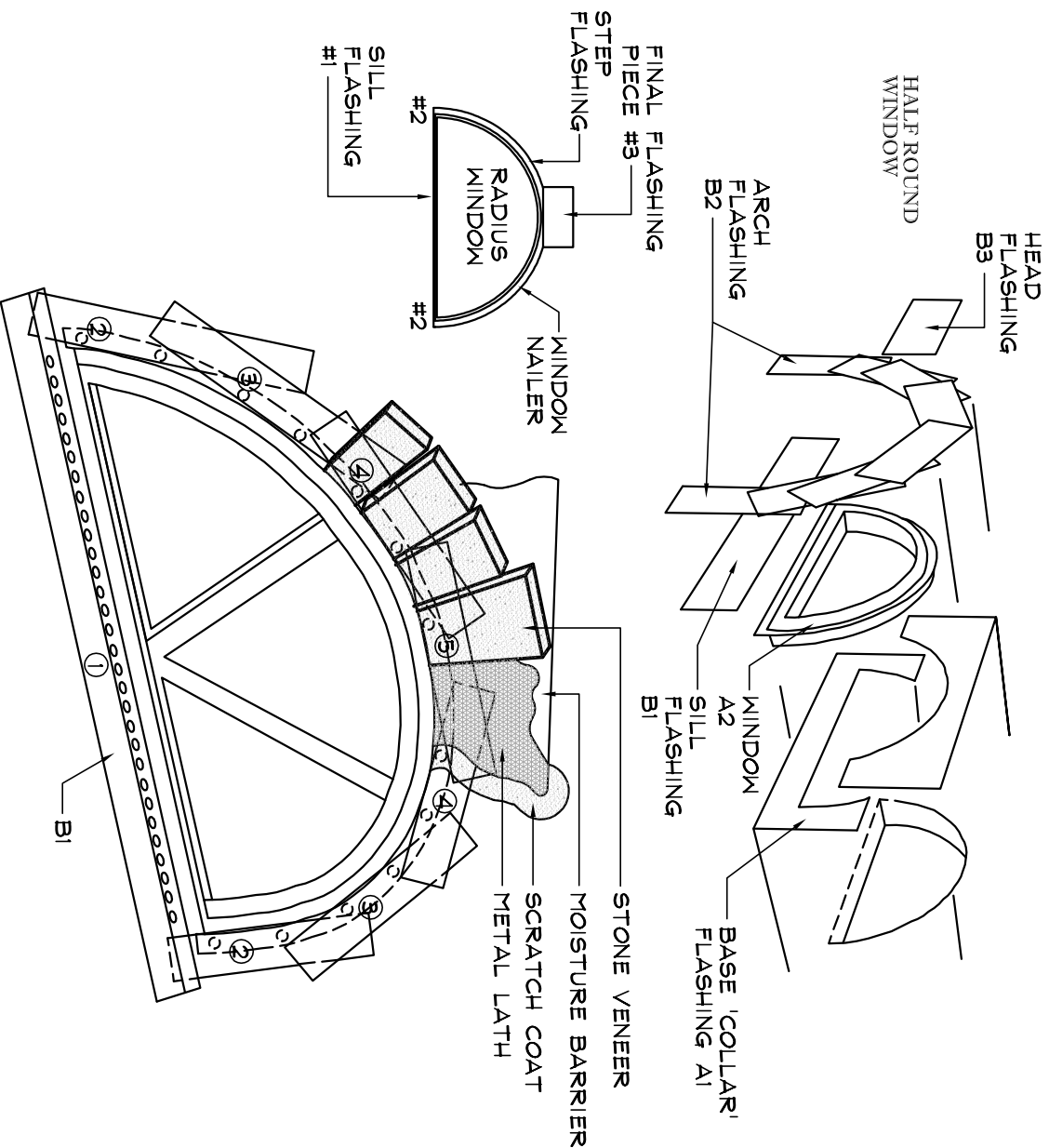
**Centurion**  
STONE

Centurion Products, Inc  
50 Van Buren Street  
Nashville, TN 37208  
www.centurionstone.com

STONE TO WINDOW/DOOR HEADER

E.0.1

# FLASHING AROUND CURVED WINDOW PERIMETER



## Specifications :

THE FOLLOWING FLASHING DETAILS SHOULD BE USED ON CURVED OR ROUND WINDOWS. USE A SELF-ADHERED FLASHING (SUCH AS Grace Vycor Plus Self Adhered Flashing) OR EQUAL.

## INSTALLATION INSTRUCTIONS :

- A 1. INSTALL MOISTURE BARRIER BASE COLLAR FLASHING (MOISTURE BARRIER)
2. INSTALL FLANGED WINDOW
- B 1. INSTALL SELF-ADHERED FLASHING STARTING AT BOTTOM OF WINDOW.
2. INSTALL ARCH STRIP FLASHING STARTING AT BOTTOM AND WORK YOUR WAY AROUND THE WINDOW COMPLETELY SEALING THE WINDOW TO THE SHEATHING.
3. AFTER BOTH SIDES ARE RUN FROM BOTTOM TO TOP, THEN INSTALL ONE PIECE AT THE TOP.

NOTE : THE SELF-ADHERED FLASHING IS TO EXTEND UP ON TO THE WINDOW TO CREATE A TIGHT SEAL. (DO NOT EXTEND OVER ON TO THE FACE OF THE WINDOW.)

NOT TO SCALE



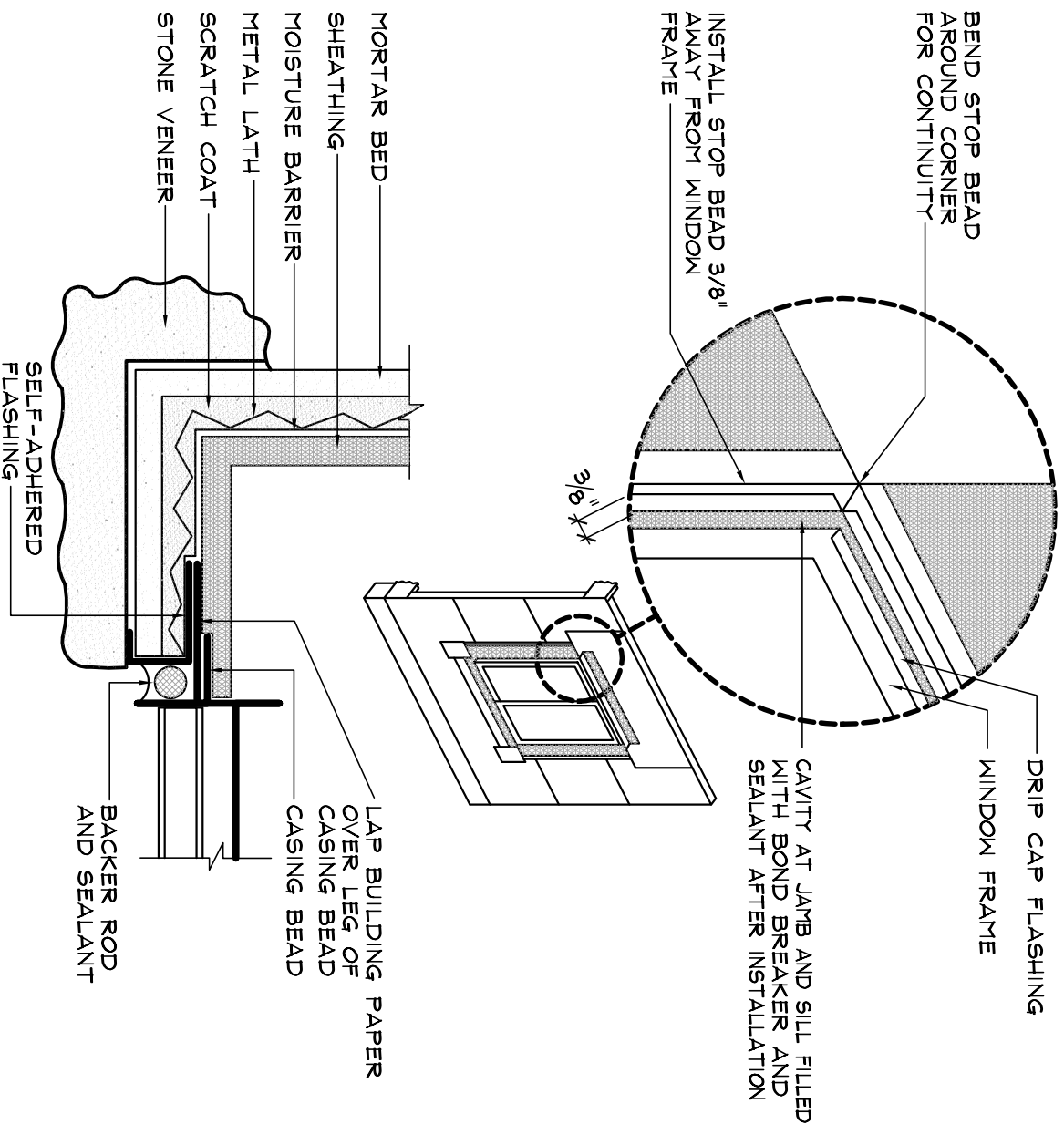
**CENTURION**  
STONE

Century Products, Inc  
50 Van Buren Street  
Nashville, TN 37208  
www.centurionstone.com

FLASHING AROUND CURVED  
WINDOW PERIMETER

E.0.2

## BACKER ROD AND SEALANT



Specifications :  
ALUMINUM / VINYL / STEEL  
COMMERCIAL WINDOWS

- BACKER ROD AND SEALANT ALONG WITH CASING BEAD ARE THE BEST CHOICE ON COMMERCIAL INSTALLATIONS.
1. INSTALL MOISTURE BARRIER AROUND WINDOW, CUT TO FIT WINDOW SIDES.
  2. INSTALL CASING BEAD AROUND PERIMETER OF WINDOW, ADJUST CASING BEAD SPACING TO FIT BACKER ROD SIZE SPECIFICATION.
  3. COVER CASING BEAD FLANGE WITH ADHESIVE MEMBRANE FLASHING.
  4. LATH AND SCRATCH COAT INSTALLED PER MANUFACTURERS INSTALLATION INSTRUCTIONS.
  5. BACKER ROD AND SEALANT INSTALLED.

NOT TO SCALE



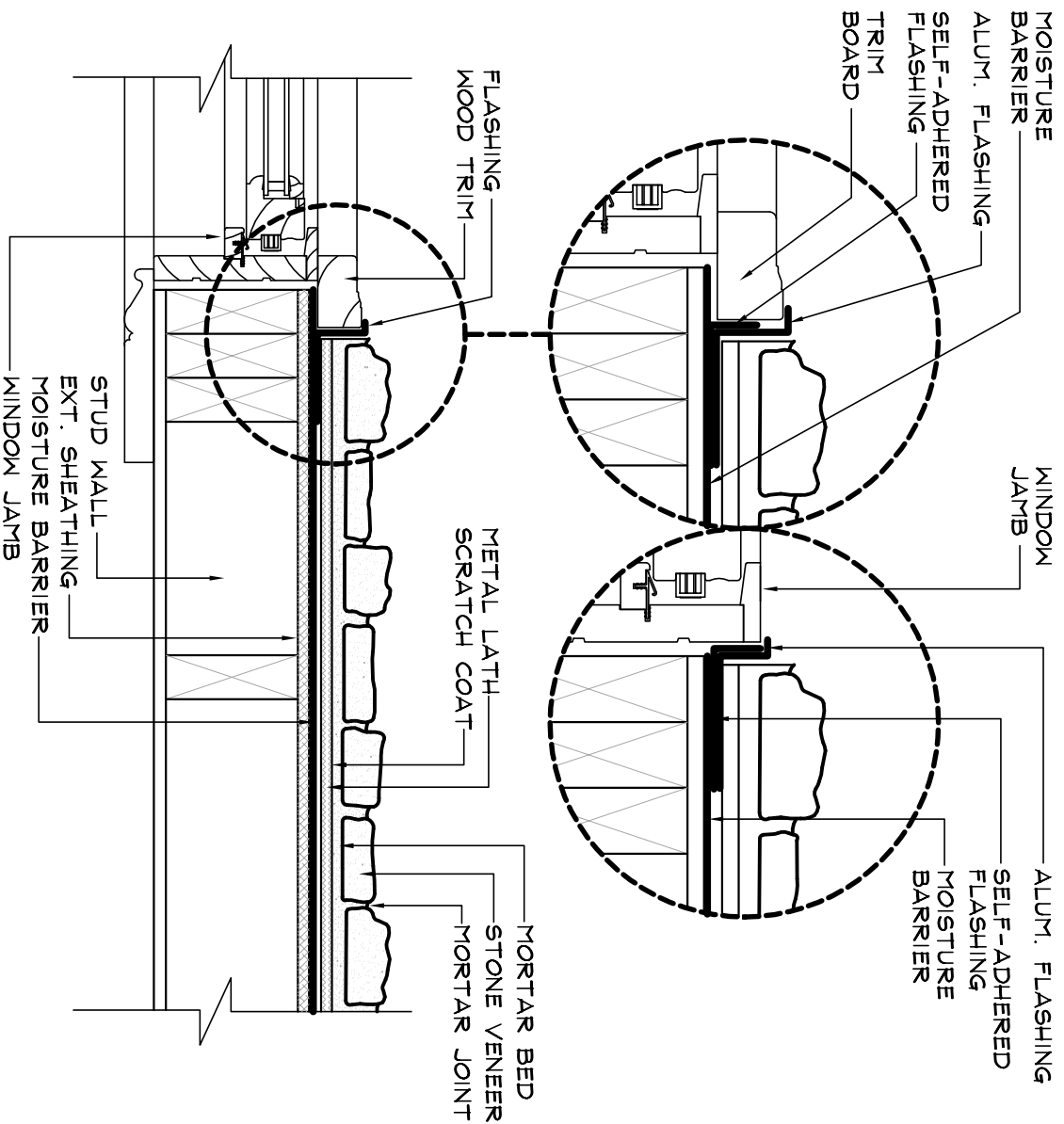
Centurion Products, Inc  
 50 Van Buren Street  
 Nashville, TN 37208  
[www.centurionstone.com](http://www.centurionstone.com)

BACKER ROD AND SEALANT

E.0.3

# STONE TO WINDOW JAMB

Specifications :



NOT TO SCALE



**Centurion**  
STONE

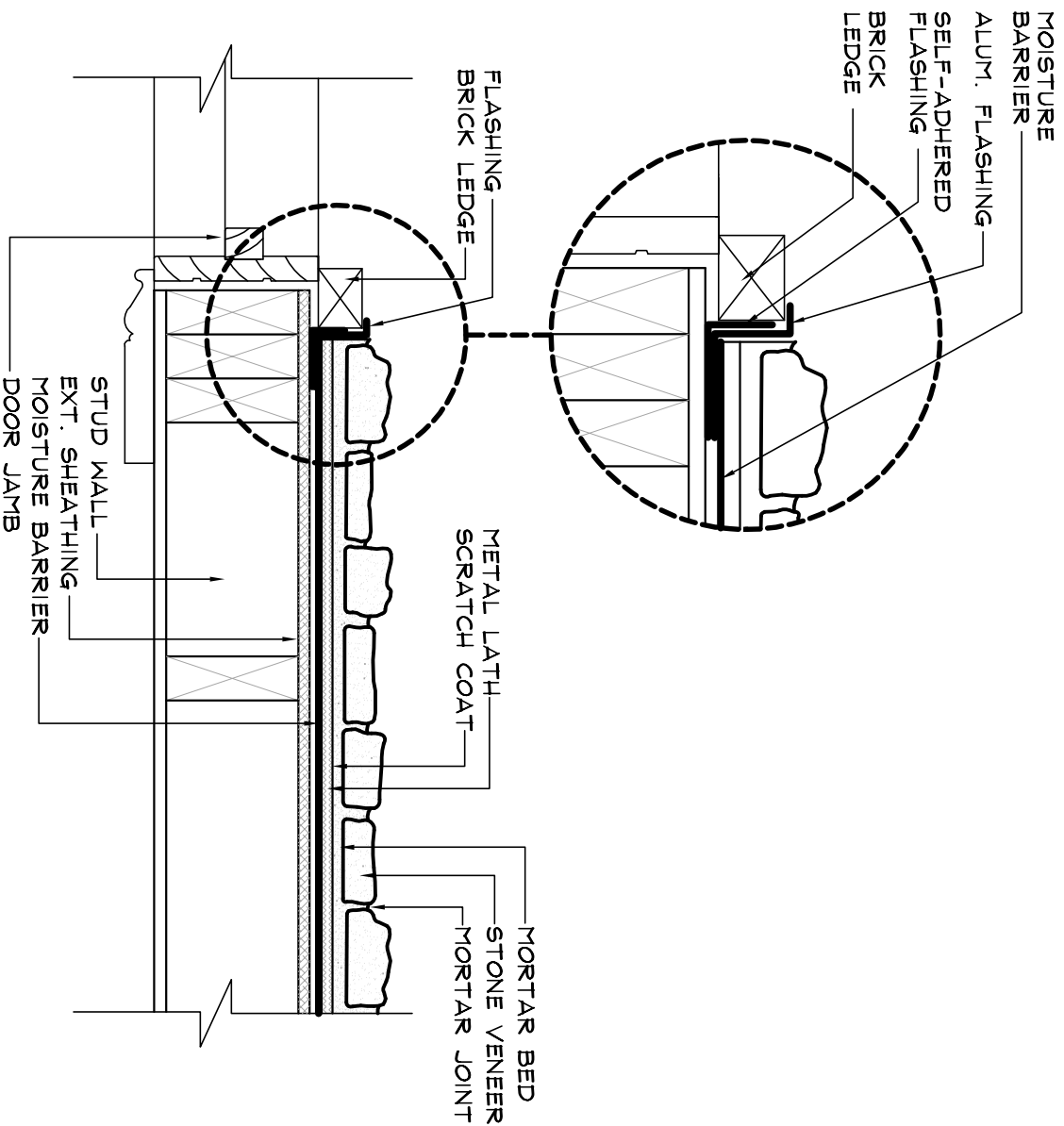
Centurion Products, Inc  
50 Van Buren Street  
Nashville, TN 37208  
www.centurionstone.com

STONE TO WINDOW JAMB

F.0.1

# STONE TO DOOR JAMB

Specifications :



NOT TO SCALE



**Centurion**  
STONE

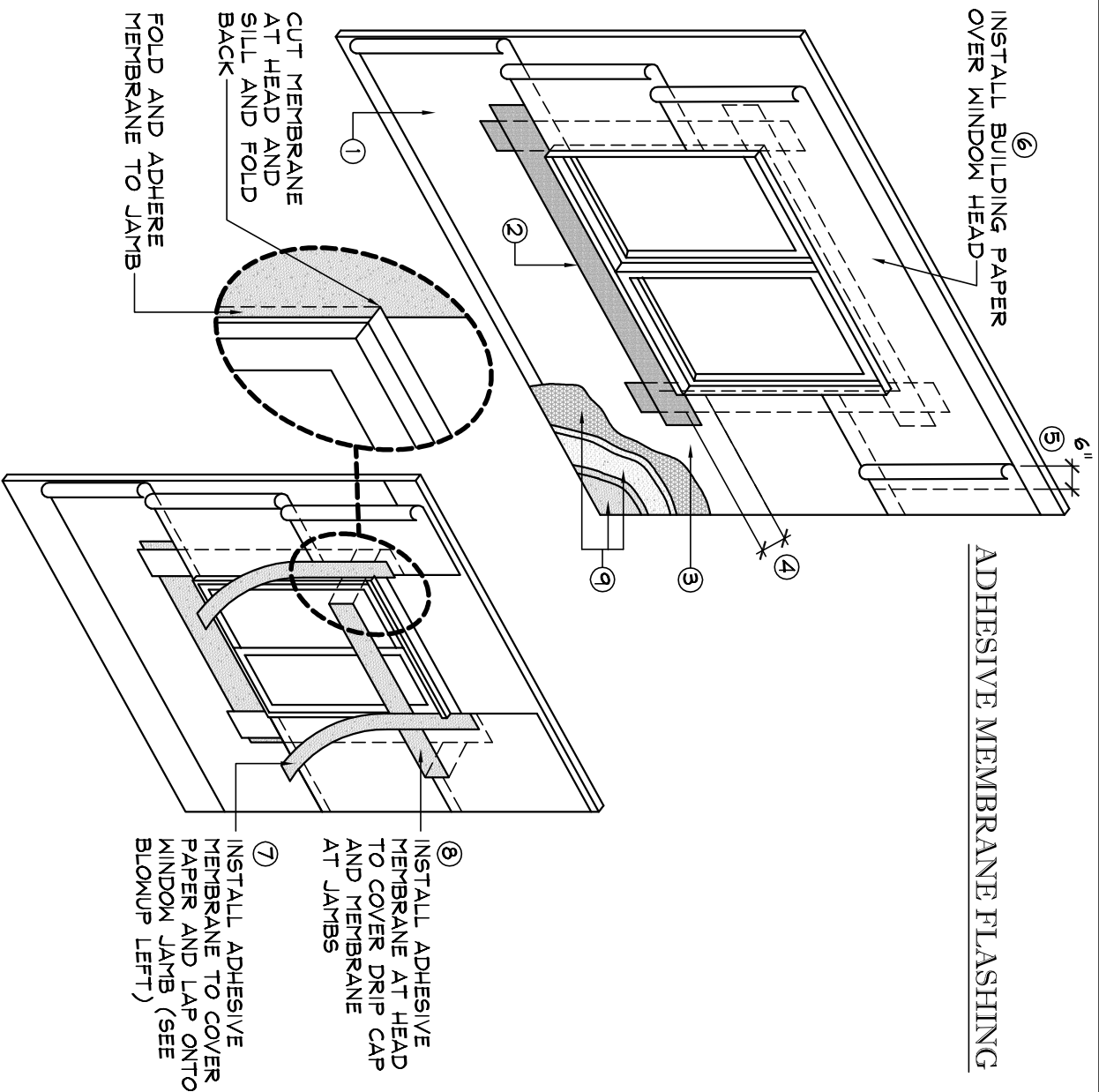
Centurion Products, Inc  
50 Van Buren Street  
Nashville, TN 37208  
[www.centurionstone.com](http://www.centurionstone.com)

STONE TO DOOR JAMB

F.0.2



⑥  
INSTALL BUILDING PAPER  
OVER WINDOW HEAD



## ADHESIVE MEMBRANE FLASHING

### Specifications :

1. INSTALL MOISTURE BARRIER CONFORMING TO SECTION 14-1 OF THE UNIFORM BUILDING CODE. ONE OR TWO LAYERS MAY BE REQUIRED TO MEET LOCAL CODES.
2. MOISTURE BARRIER TO SLIP UNDER WINDOW SILL - NOTCH BARRIER TO FIT TIGHTLY AROUND WINDOW FRAME PROFILE.
3. SLIP LOWER END OF JAMB FLASHING PAPER AND SILL FLASHING PAPER OVER MOISTURE BARRIER AT WINDOW SILL.
4. LAP MOISTURE BARRIER VERTICALLY 6" (152mm) MIN.
5. LAP MOISTURE BARRIER HORIZONTALLY 2" (51mm) MIN.
6. INSTALL BUILDING PAPER OVER WINDOW HEAD.
7. INSTALL ADHESIVE MEMBRANE - COVER PAPER AND LAP ONTO WINDOW AT LEFT).
8. INSTALL ADHESIVE MEMBRANE AT HEAD TO COVER DRIP CAP AND MEMBRANE AT JAMBS.
9. INSTALL STONE SETTING MATERIAL PER MANUFACTURE'S INSTRUCTIONS.

NOT TO SCALE



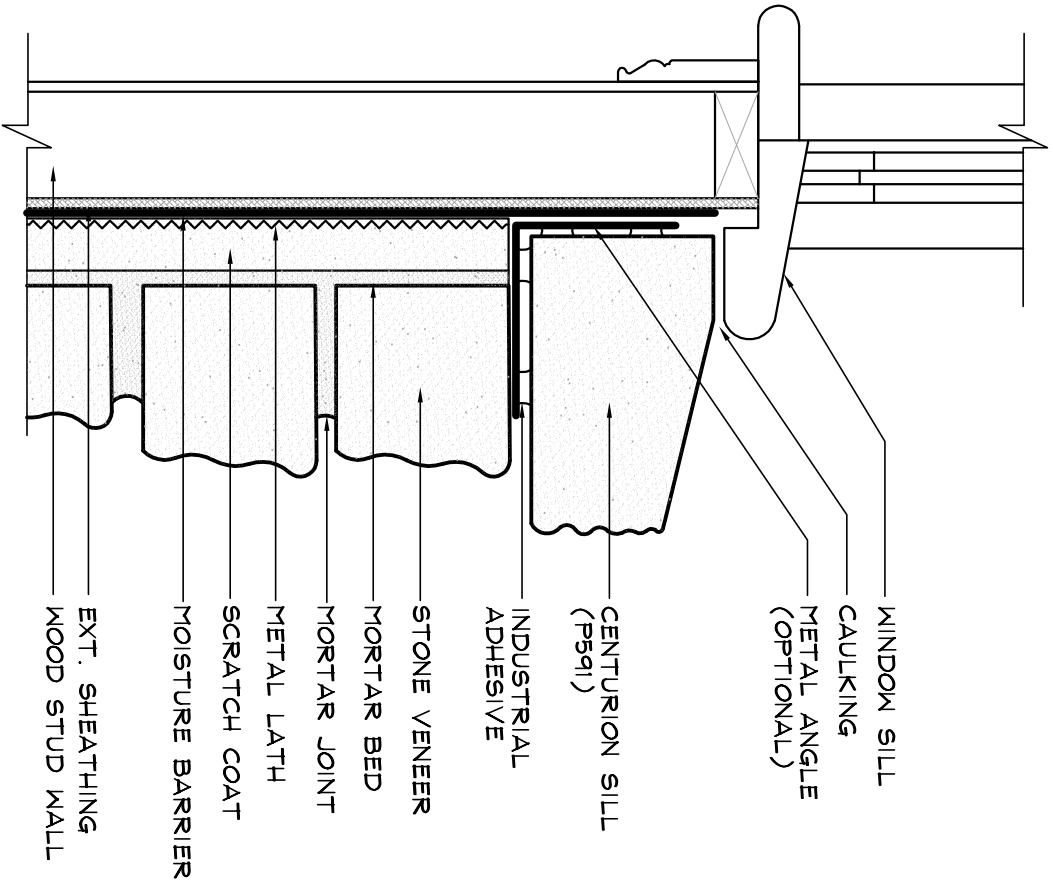
**CENTURION**  
STONE

Centurion Products, Inc  
50 Van Buren Street  
Nashville, TN 37208  
[www.centurionstone.com](http://www.centurionstone.com)

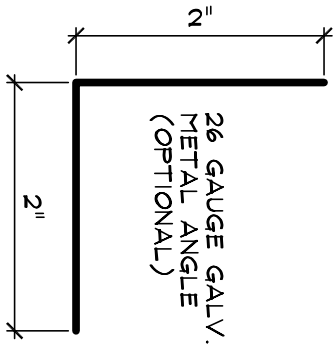
## ADHESIVE MEMBRANE FLASHING

F.0.3

STONE WINDOW SILL TO WOOD STUD



Specifications :



NOT TO SCALE



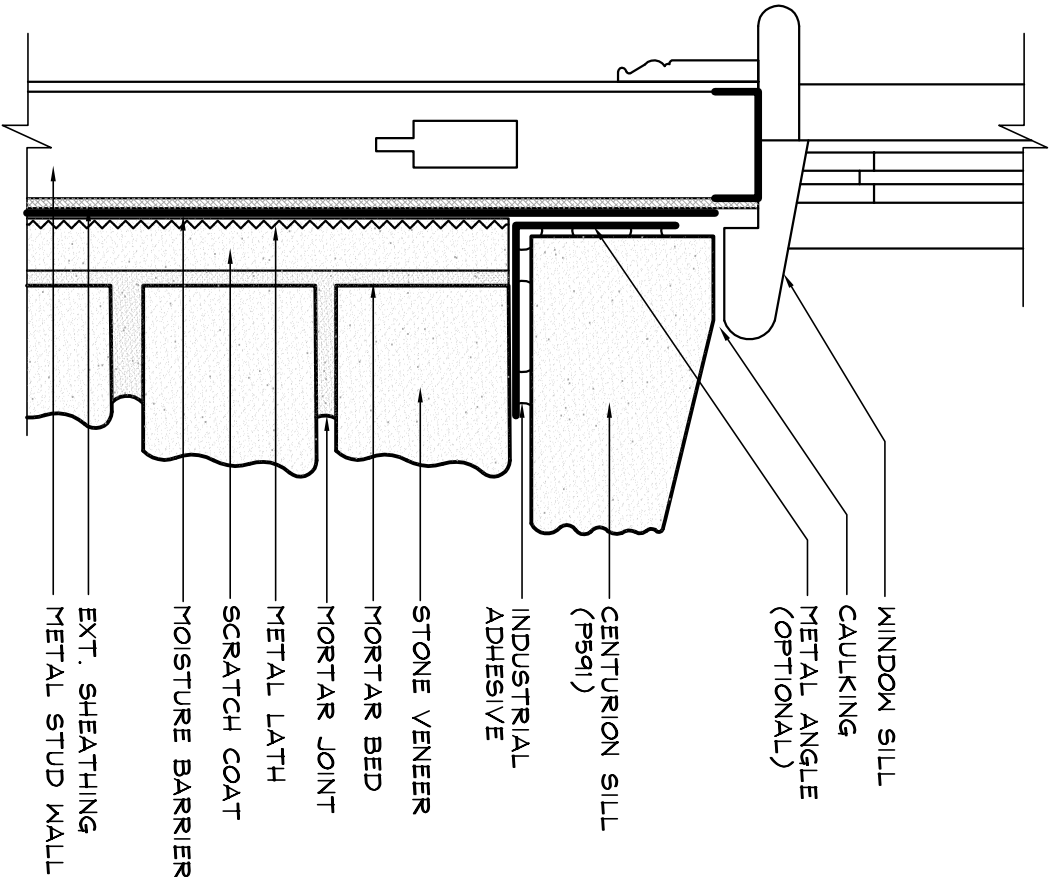
**CENTURION**  
STONE

Centurion Products, Inc  
50 Van Buren Street  
Nashville, TN 37208  
[www.centurionstone.com](http://www.centurionstone.com)

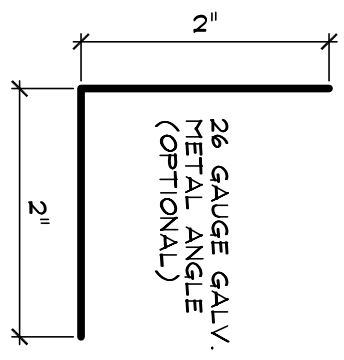
STONE WINDOW SILL TO WOOD STUD

G.0.1

STONE WINDOW SILL TO METAL STUD



Specifications :



NOT TO SCALE



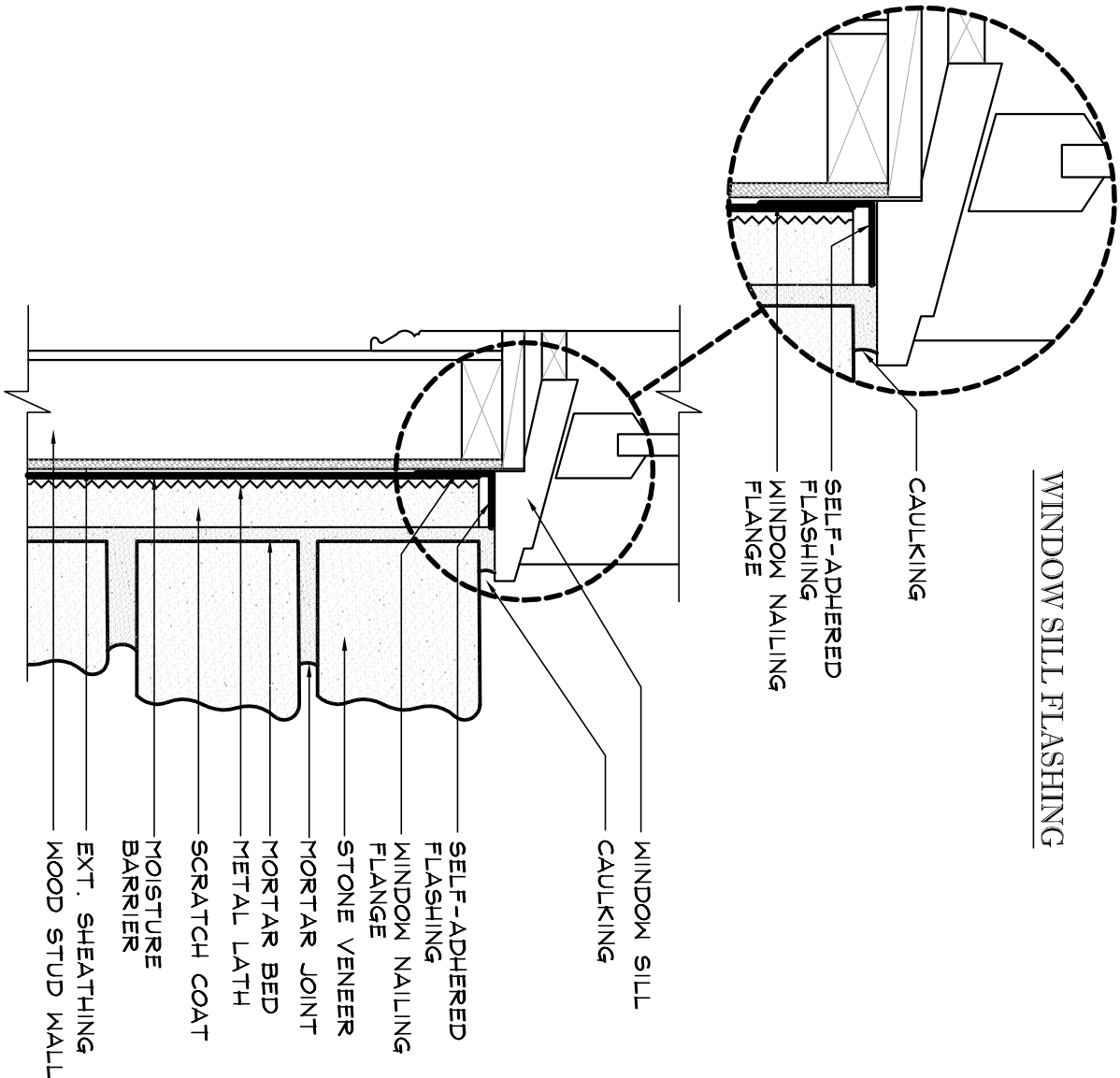
**CENTURION**  
STONE

Centurion Products, Inc  
50 Van Buren Street  
Nashville, TN 37208  
[www.centurionstone.com](http://www.centurionstone.com)

STONE WINDOW SILL TO METAL STUD

G.0.2

# WINDOW SILL FLASHING



## Specifications :

**MOISTURE BARRIER :**  
EXTERIOR WOOD SURFACES ARE COVERED WITH A MOISTURE BARRIER CONFORMING TO SECTION 14.1 OF THE UNIFORM BUILDING CODE. BARRIER TO COMPLY WITH ASTM D-726 GRADE "D" BUILDING PAPER, ASPHALT SATURATED ORGANIC FELT NO. 15 OR A HOUSE WRAP PRODUCT. ONIT BARRIER ON INTERIOR INSTALLATIONS.

**METAL LATH :**  
A CORROSION RESISTANT EXPANDED METAL LATH WITH A MIN. RATING OF 2.5LBS. PER SQ. YARD THAT COMPLIES WITH ASTM D-226. USE GALVANIZED LATH FOR EXTERIOR APPLICATIONS. BLACK METAL (NON-GALVANIZED) MAY BE USED FOR INTERIOR APPLICATIONS.

## MORTAR MIX DESIGNS

| GROUTED JOINT INSTALLATION |                          |                          |               |            |
|----------------------------|--------------------------|--------------------------|---------------|------------|
| MORTAR                     | PORTLAND CEMENT OR BLEND | MASONRY CEMENT OR TYPE S | HYDRATED LIME | SAND       |
| TYPE S                     | CEMENT OR BLEND          | CEMENT                   | OR LIME PUTTY |            |
| -                          | BLEND                    | TYPE (N)                 |               |            |
| -                          | 2                        | -                        | 1             | 5 TO 7     |
| 3                          | -                        | -                        | -             | 5 TO 7     |
| -                          | -                        | 1                        | -             | 1.5 TO 2.5 |
| -                          | 1                        | -                        | 1             | 1.5 TO 2.5 |
| MIX FOR DRY STACK SERIES   |                          |                          |               |            |
| MORTAR                     | PORTLAND CEMENT OR BLEND |                          |               | SAND       |
| TYPE S                     | CEMENT OR BLEND          |                          |               |            |
| -                          | 3                        | 1/2 PARTS THINSET        | -             | 7          |
| -                          | 2                        | BONDING AGENT            | 1 PART LIME   | 7          |
| 3                          | -                        | BONDING AGENT            | -             | 7          |

\* MUST BE LATEX MODIFIED THINSET FOR EXTERIOR USE MEETING ANSI A 118.4

THE MORTAR BED CONSISTENCY MUST ALLOW MORTAR TO BE SQUEEZED OUT AROUND ALL EDGES OF THE VENEER UNIT TO ASSURE FULL BOND. ALL JOINTS MUST BE TOOLED

**BONDING AGENT AND WATER (PRE-BLENDED [1])**  
CONCRETE BONDING AGENT CONCRETE BONDING AGENTS SHALL MEET THE REQUIREMENTS OF ASTM C-1094 OR ASTM C-492.

**WEATHER CONDITIONS :**  
IN HOT WEATHER CONDITIONS IT MAY BECOME NECESSARY TO MOISTEN THE WALL BEFORE APPLYING THE SETTING COAT. WEATHER CONDITIONS MAY ALSO REQUIRE MOISTENING THE BACK OF EACH STONE. THIS IS BEST DONE USING A FINE SPRAY OF WATER OR A NET BRUSH. THIS STEP IS IMPORTANT TO PREVENT EXCESSIVE ABSORPTION OF MOISTURE FROM THE MORTAR APPLICATIONS MUST BE PROTECTED FROM FREEZING TEMPERATURES BY SHEETING THE WALL AS MORTAR WILL NOT SET UP PROPERLY UNDER SUCH CONDITIONS. DO NOT USE ANTI-FREEZE COMPOUNDS TO LOWER THE FREEZING POINT OF MORTAR.

**APPLIED :**  
PER CENTURION STONE VENEER INSTALLATION PROCEDURES.

NOT TO SCALE



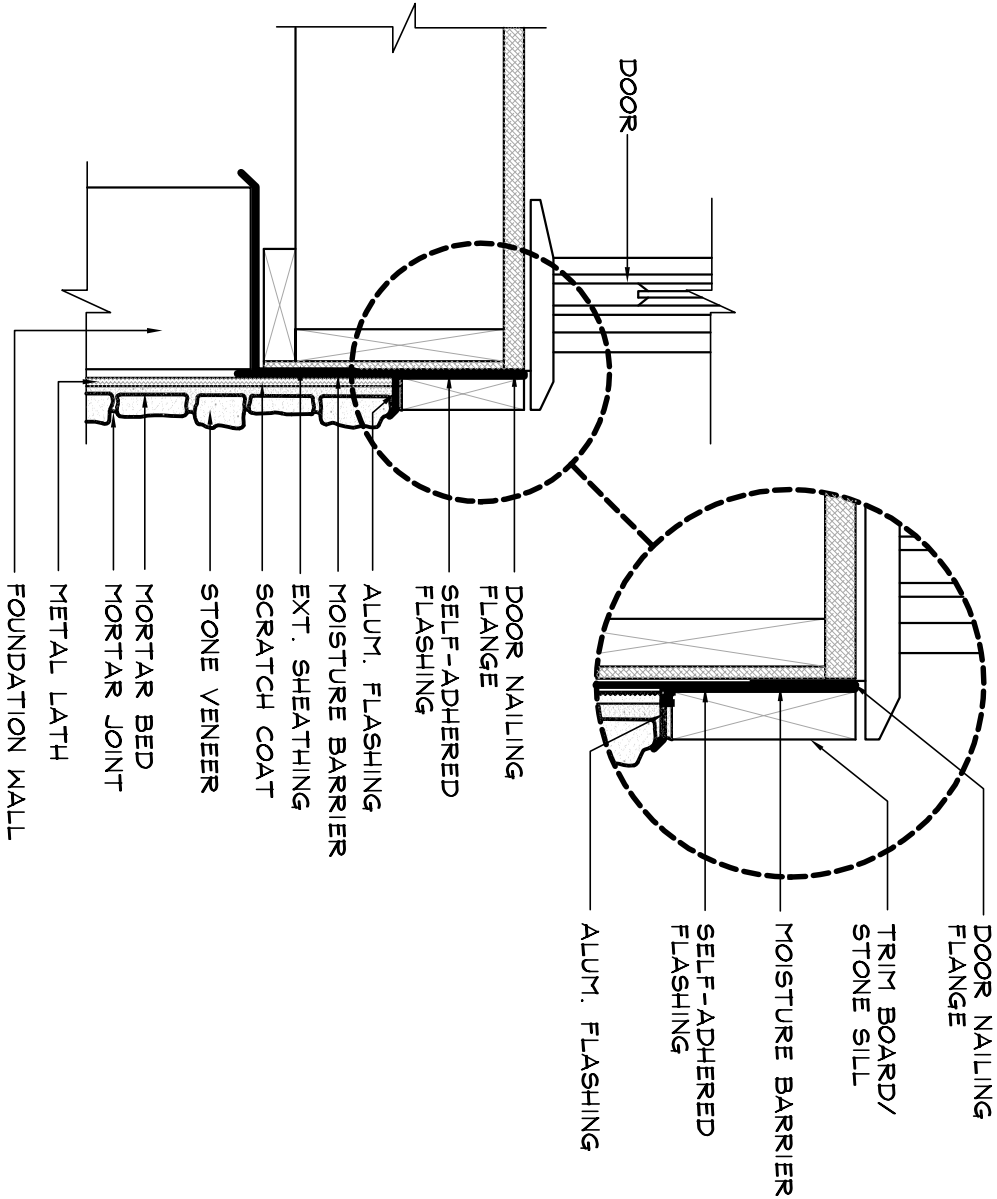
Centurion Products, Inc  
50 Van Buren Street  
Nashville, TN 37208  
www.centurionstone.com

## WINDOW SILL FLASHING

G.0.3

DOOR SILL FLASHING

Specifications :



NOT TO SCALE



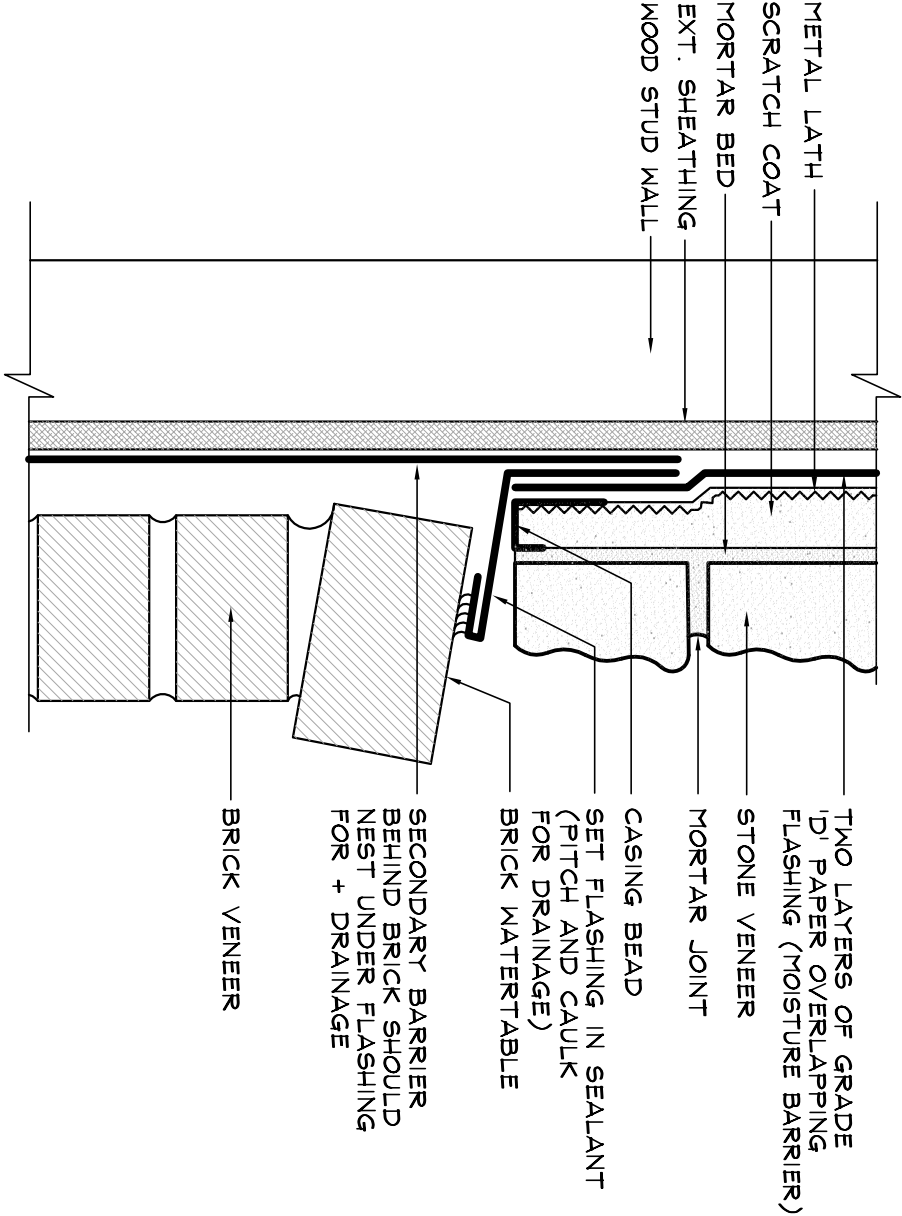
**Centurion**  
STONE

Centurion Products, Inc  
50 Van Buren Street  
Nashville, TN 37208  
[www.centurionstone.com](http://www.centurionstone.com)

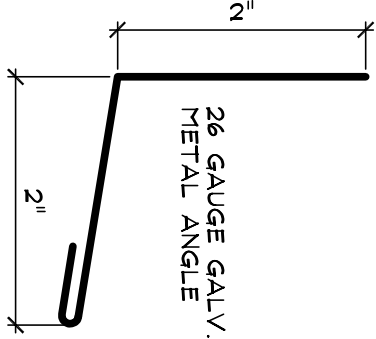
DOOR SILL FLASHING

G.0.4

STONE TO BRICK WAINSCOT



Specifications :



NOT TO SCALE



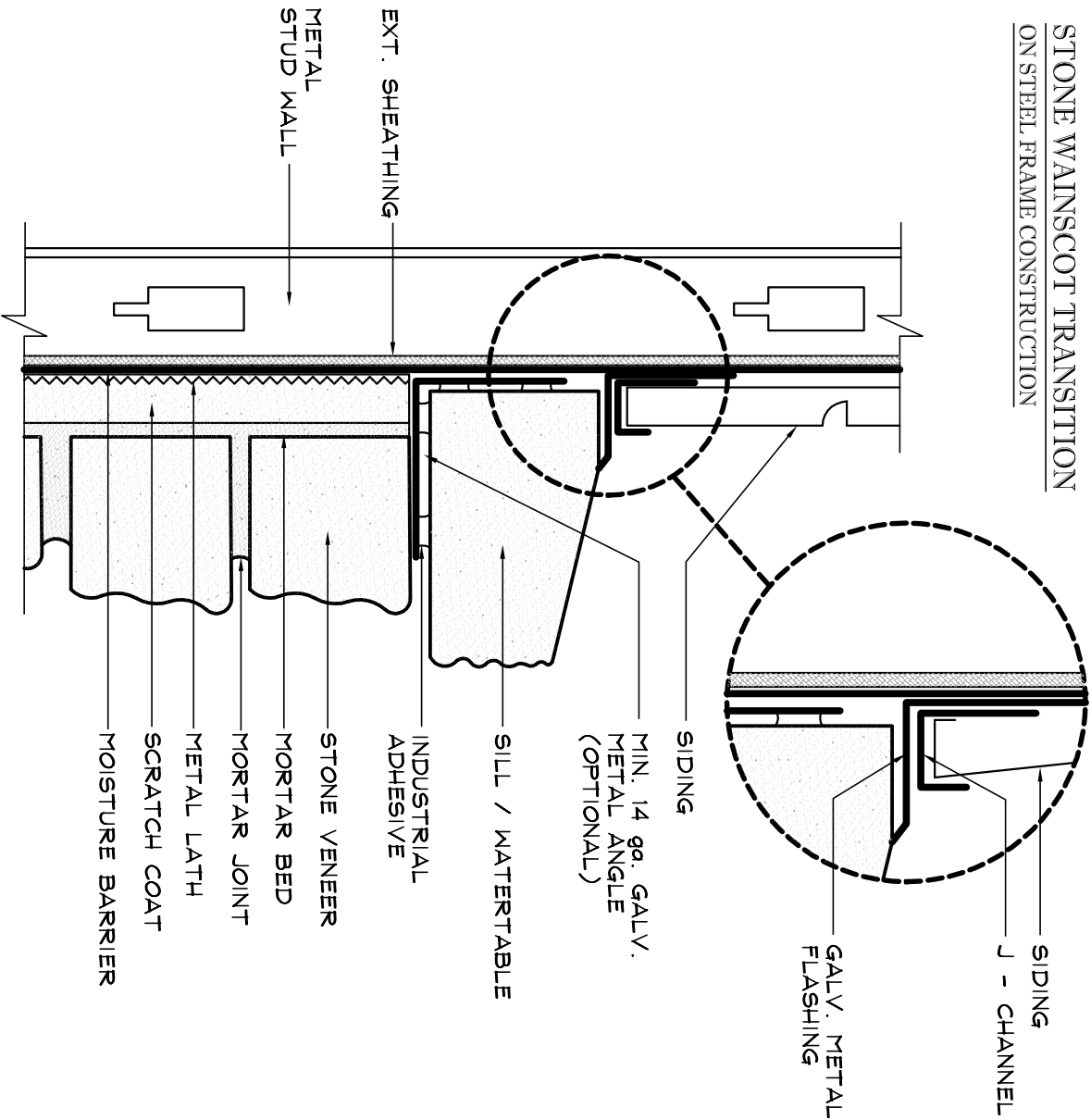
**Centurion**  
STONE

Centurion Products, Inc  
50 Van Buren Street  
Nashville, TN 37208  
[www.centurionstone.com](http://www.centurionstone.com)

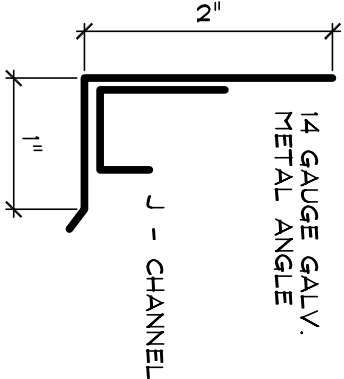
STONE TO BRICK WAINSCOT

H.0.1

STONE WAINSCOT TRANSITION  
ON STEEL FRAME CONSTRUCTION



Specifications :



NOT TO SCALE



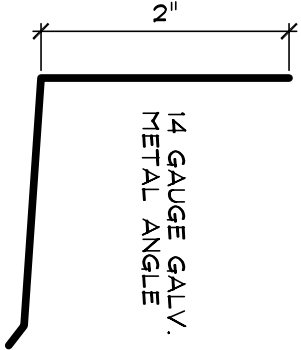
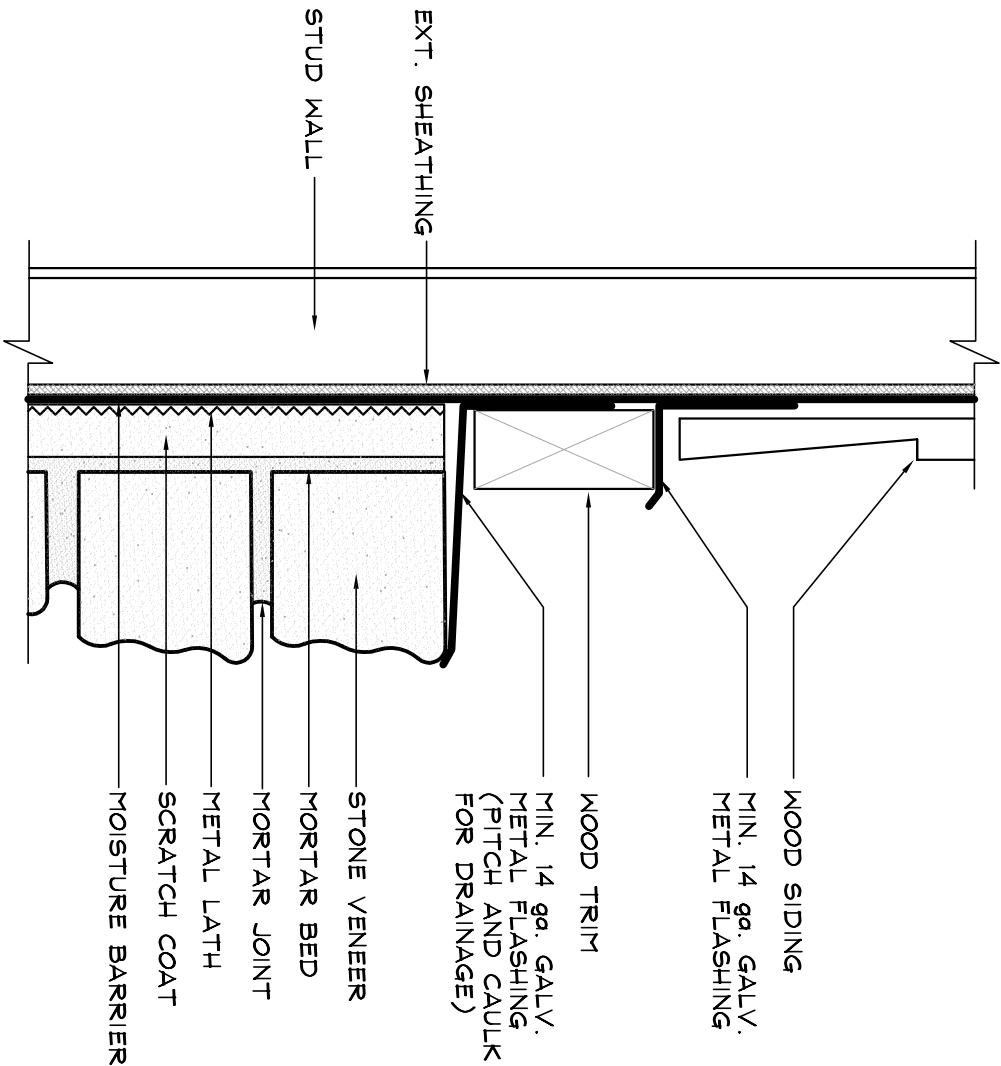
Century Products, Inc  
50 Van Buren Street  
Nashville, TN 37208  
[www.centurionstone.com](http://www.centurionstone.com)

STONE WAINSCOT TRANSITION

H.0.2

STONE TO WOOD TRIM  
STUD CONSTRUCTION

Specifications :



NOT TO SCALE



**Centurion**  
STONE

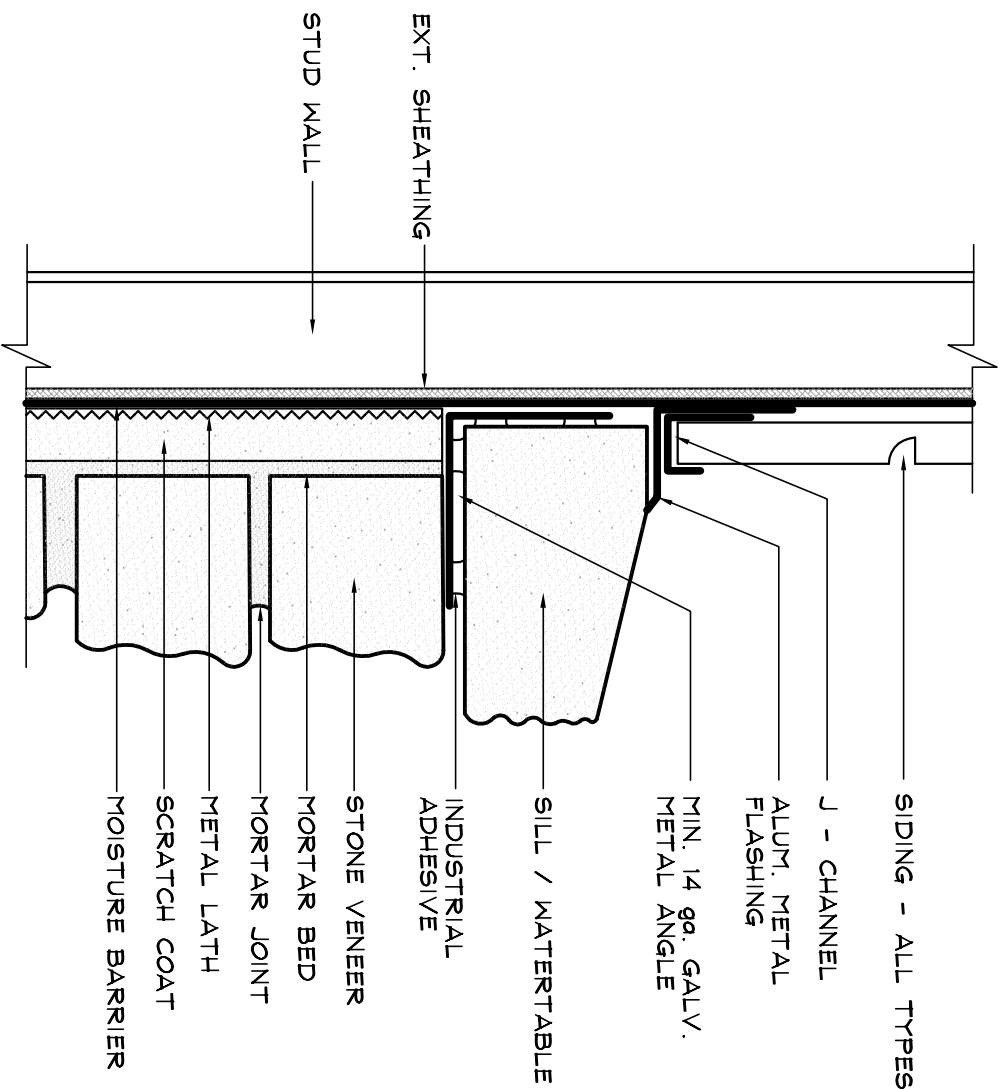
Centurion Products, Inc  
50 Van Buren Street  
Nashville, TN 37208  
[www.centurionstone.com](http://www.centurionstone.com)

STONE TO WOOD TRIM  
STUD CONSTRUCTION

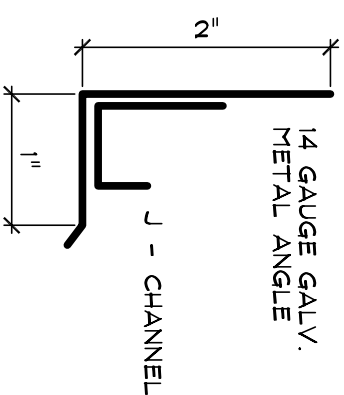
H.0.3



WATERTABLE SET WITH ANGLE SUPPORT



Specifications :



NOT TO SCALE



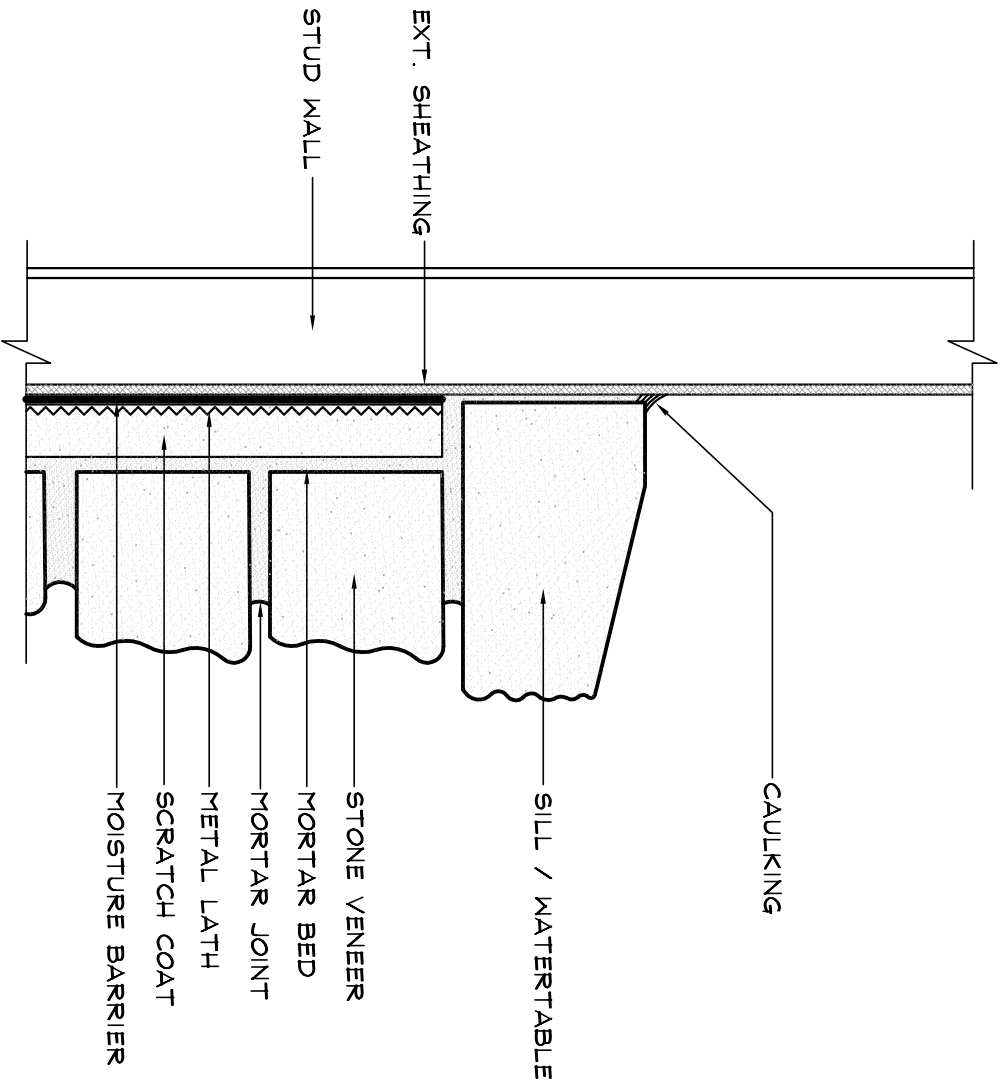
**Centurion**  
STONE

Centurion Products, Inc  
50 Van Buren Street  
Nashville, TN 37208  
[www.centurionstone.com](http://www.centurionstone.com)

WATERTABLE SET WITH ANGLE SUPPORT

H.O.4

WATERTABLE SET WITH MASONRY



Specifications :

NOT TO SCALE



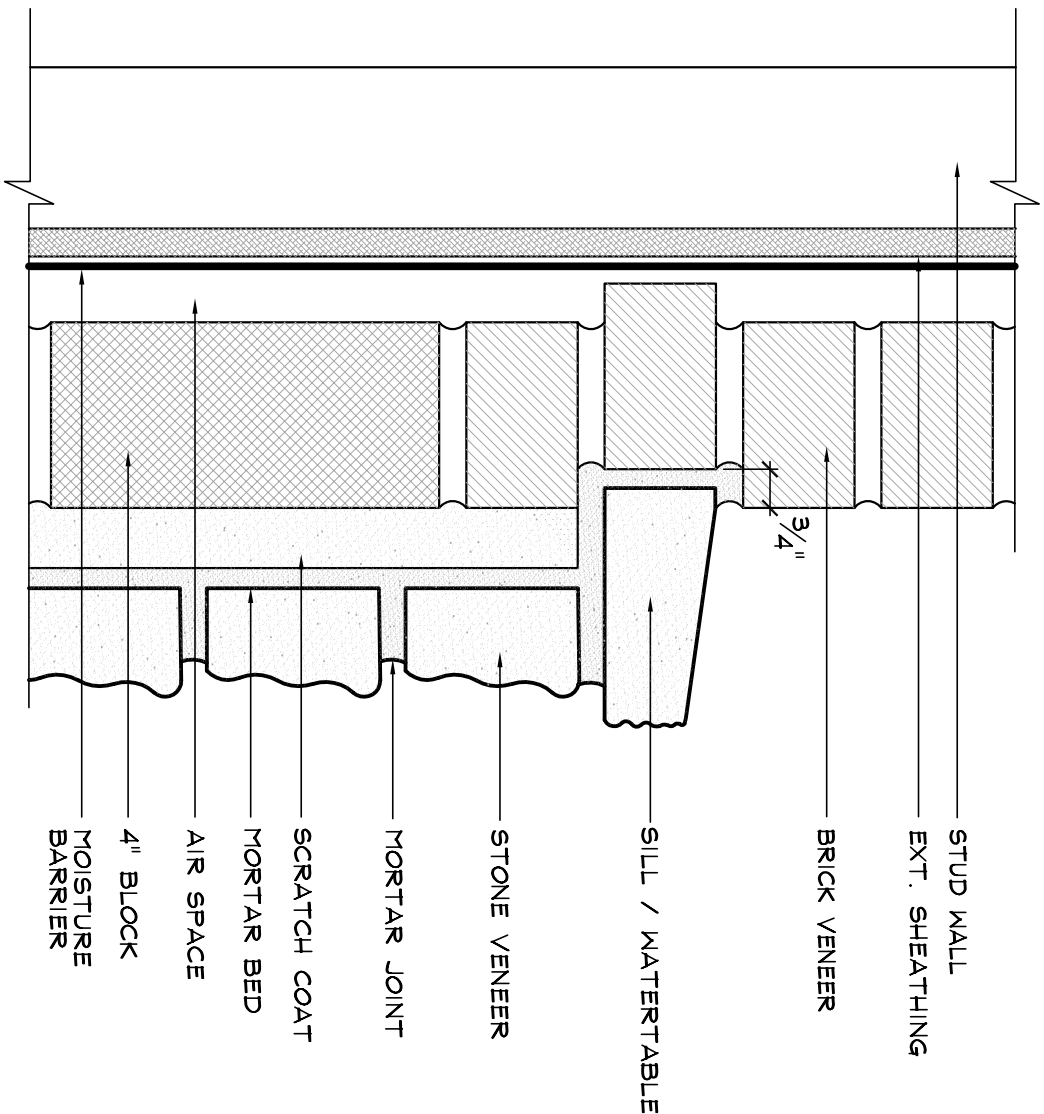
**Centurion**  
STONE

Centurion Products, Inc  
50 Van Buren Street  
Nashville, TN 37208  
[www.centurionstone.com](http://www.centurionstone.com)

WATERTABLE SET WITH MASONRY

H.0.5

WATERTABLE SET INTO BRICK



Specifications :  
WHEN INSTALLING WATERTABLE IN BRICK WALL, OFFSET BRICK 3/4" ON BRICK COURSE WHERE WATERTABLE IS INSTALLED.

NOT TO SCALE



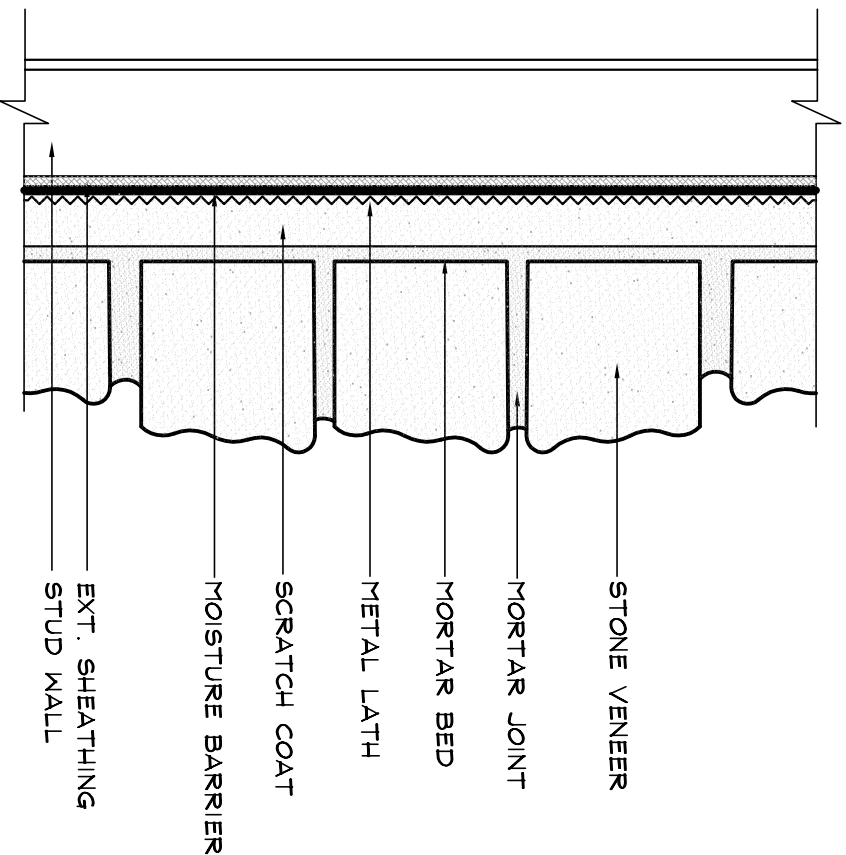
**CENTURION**  
STONE

Centurion Products, Inc  
50 Van Buren Street  
Nashville, TN 37208  
[www.centurionstone.com](http://www.centurionstone.com)

WATERTABLE SET INTO BRICK

H.0.6

## STONE OVER SHEATHED WALL



### Specifications :

**MOISTURE BARRIER :**  
EXTERIOR WOOD SURFACES ARE COVERED WITH A MOISTURE BARRIER CONFORMING TO SECTION 141 OF THE UNIFORM BUILDING CODE. BARRIER TO COMPLY WITH ASTM D-726 GRADE 15' BUILDING PAPER, ASPHALT SATURATED ORGANIC FELT NO. 15 OR A HOUSE WRAP PRODUCT. ONIT BARRIER ON INTERIOR INSTALLATIONS.

**METAL LATH :**  
A CORROSION RESISTANT EXPANDED METAL LATH WITH A MIN. RATING OF 2.50% PER SQ. YARD THAT COMPLIES WITH ASTM D-226. USE GALVANIZED LATH FOR EXTERIOR APPLICATIONS. BLACK METAL (NON-GALVANIZED) MAY BE USED FOR INTERIOR APPLICATIONS.

### MORTAR MIX DESIGNS

| GROUTED JOINT INSTALLATION |                          |                         |                             |            |
|----------------------------|--------------------------|-------------------------|-----------------------------|------------|
| MORTAR                     | PORTLAND CEMENT OR BLEND | MASONRY CEMENT TYPE (N) | HYDRATED LIME OR LINE PUTTY | SAND       |
| -                          | 2                        | -                       | 1                           | 5 TO 7     |
| 3                          | -                        | -                       | -                           | 5 TO 7     |
| -                          | -                        | 1                       | -                           | 1.5 TO 2.5 |
| -                          | 1                        | -                       | 1                           | 1.5 TO 2.5 |
| MIX FOR DRY STACK SERIES   |                          |                         |                             |            |
| MORTAR                     | PORTLAND CEMENT OR BLEND |                         |                             | SAND       |
| -                          | 3                        | 1/2 PARTS THINSET       | -                           | 7          |
| -                          | 2                        | BONDING AGENT           | 1 PART LINE                 | 7          |
| 3                          | -                        | BONDING AGENT           | -                           | 7          |

\* MUST BE LATEX MODIFIED THINSET FOR EXTERIOR USE MEETING ANSI A 118.4

THE MORTAR BED CONSISTENCY MUST ALLOW MORTAR TO BE SQUEEZED OUT AROUND ALL EDGES OF THE VENEER UNIT TO ASSURE FULL BOND. ALL JOINTS MUST BE TOOLED

**BONDING AGENT AND WATER (PRE-BLENDED 1:1) CONCRETE BONDING AGENT :** CONCRETE BONDING AGENTS SHALL MEET THE REQUIREMENTS OF ASTM C-1094 OR ASTM C-992.

**WEATHER CONDITIONS :**  
IN HOT WEATHER CONDITIONS IT MAY BECOME NECESSARY TO MOISTEN THE WALL BEFORE APPLYING THE SETTING COAT. WEATHER CONDITIONS MAY ALSO REQUIRE HOLDING THE BACK OF EACH STONE. THIS IS BEST DONE USING A FINE SPRAY OF WATER OR A MIST BRUSH. THIS STEP IS IMPORTANT TO PREVENT EXCESSIVE ABSORPTION OF MOISTURE FROM THE MORTAR APPLICATIONS MUST BE PROTECTED FROM FREEZING TEMPERATURES BY SHEETING THE WALL AS MORTAR WILL NOT SET UP PROPERLY UNDER SUCH CONDITIONS. DO NOT USE ANTI-FREEZE COMPOUNDS TO LOWER THE FREEZING POINT OF MORTAR.

**APPLIED :**  
PER CENTURIUM STONE VENEER INSTALLATION PROCEDURES.

NOT TO SCALE



**Centurion**  
STONE

Centurion Products, Inc  
50 Van Buren Street  
Nashville, TN 37208  
www.centurionstone.com

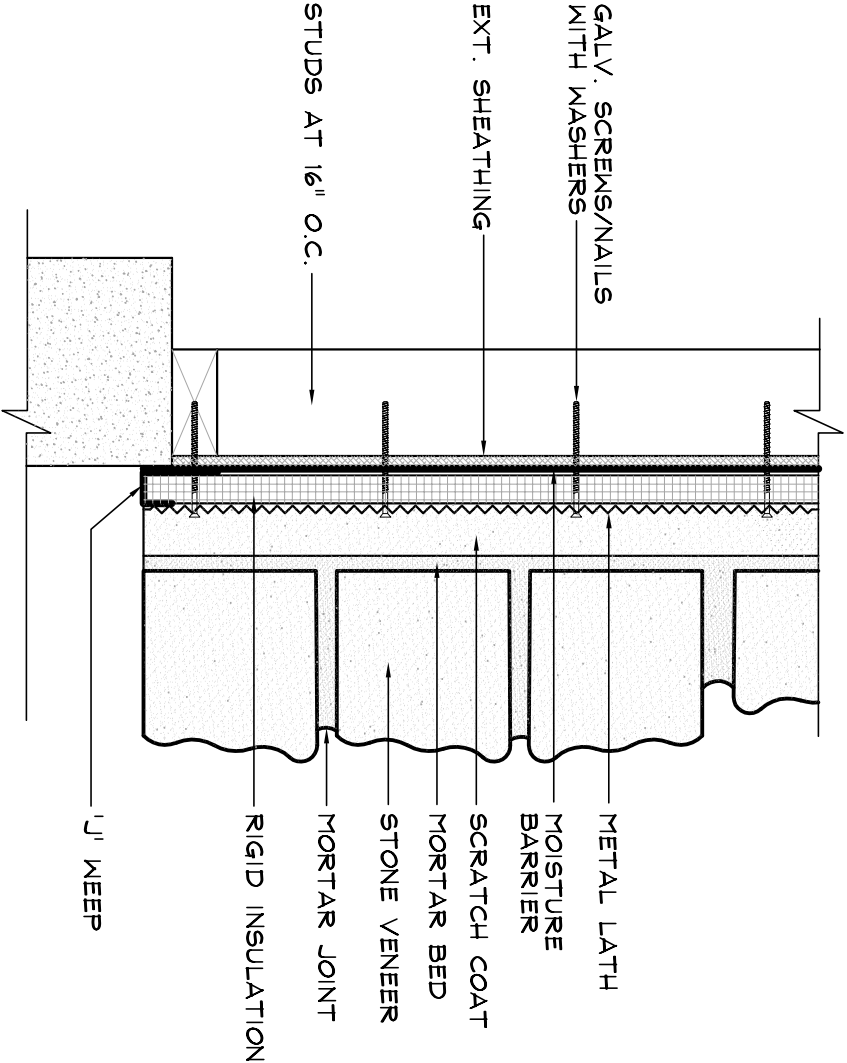
STONE OVER SHEATHED WALL  
WOOD FRAMING

I.0.1

STONE OVER RIGID INSULATION WALL

**OVER RIGID INSULATION BOARD**

PREPARE SURFACE SAME AS WOOD FRAME CONSTRUCTION WITH SHEATHING WITH THE FOLLOWING EXCEPTIONS : THE FASTENERS SHOULD BE ON 4" CENTERS VERTICALLY AND 16" ON CENTERS HORIZONTALLY WITH 1" MINIMUM PENETRATING THE STUD



Specifications :

**MOISTURE BARRIER :**  
EXTERIOR WOOD SURFACES ARE COVERED WITH A MOISTURE BARRIER CONFORMING TO SECTION 141 OF THE UNIFORM BUILDING CODE. BARRIER TO COMPLY WITH ASTM D-726 GRADE 17" BUILDING PAPER, ASPHALT SATURATED ORGANIC FELT NO. 15 OR A HOUSE WOOD PRODUCT. ONIT BARRIER ON INTERIOR INSTALLATIONS.

**METAL LATH :**  
A CORROSION RESISTANT EXPANDED METAL LATH WITH A MIN. RATING OF 2.5lb. PER SQ. YARD THAT COMPLIES WITH ASTM D-726. USE GALVANIZED LATH FOR EXTERIOR APPLICATIONS. BLACK METAL (NON-GALVANIZED) MAY BE USED FOR INTERIOR APPLICATIONS.

**MORTAR MIX DESIGNS**

| GROUTED JOINT INSTALLATION |                    |                   |                     |            |
|----------------------------|--------------------|-------------------|---------------------|------------|
| MORTAR                     | PORTLAND CEMENT OR | MASONRY CEMENT OR | HYDRATED LIME PUTTY | SAND       |
| TYPE 5                     | CEMENT OR          | CEMENT            | OR LIME PUTTY       |            |
|                            | BLENDED            | TYPE (N)          |                     |            |
| -                          | 2                  | -                 | 1                   | 5 TO 7     |
| 3                          | -                  | -                 | -                   | 5 TO 7     |
| -                          | -                  | 1                 | -                   | 1.5 TO 2.5 |
| -                          | 1                  | -                 | 1                   | 1.5 TO 2.5 |
| MIX FOR DRY STACK SERIES   |                    |                   |                     |            |
| MORTAR                     | PORTLAND CEMENT OR |                   |                     | SAND       |
| TYPE 5                     | CEMENT OR          |                   |                     |            |
|                            | BLENDED            |                   |                     |            |
| -                          | 3                  | 1/2 PARTS THINSET | -                   | 7          |
| -                          | 2                  | BONDING AGENT     | 1 PART LIME         | 7          |
| 3                          | -                  | BONDING AGENT     | -                   | 7          |

\* MUST BE LATEX MODIFIED THINSET FOR EXTERIOR USE MEETING ANSI A 118.4

THE MORTAR BED CONSISTENCY MUST ALLOW MORTAR TO BE SQUEEZED OUT AROUND ALL EDGES OF THE VENEER UNIT TO ASSURE FULL BOND. ALL JOINTS MUST BE TOOLED

BONDING AGENT AND WATER (PRE-BLENDED 14) CONCRETE BONDING AGENT CONCRETE BONDING AGENTS SHALL MEET THE REQUIREMENTS OF ASTM C-1094 OR ASTM C-492.

**WEATHER CONDITIONS :**  
IN HOT WEATHER CONDITIONS IT MAY BECOME NECESSARY TO MOISTEN THE WALL BEFORE APPLYING THE SETTING COAT. WEATHER CONDITIONS MAY ALSO REQUIRE MOISTENING THE BACK OF EACH STONE. THIS IS BEST DONE USING A FINE SPRAY OF WATER OR A NET BRUSH. THIS STEP IS IMPORTANT TO PREVENT EXCESSIVE ABSORPTION OF MOISTURE FROM THE MORTAR APPLICATIONS MUST BE PROTECTED FROM FREEZING TEMPERATURES BY SHEATHING THE WALL AS MORTAR WILL NOT SET UP PROPERLY UNDER SUCH CONDITIONS. DO NOT USE ANTI-FREEZE COMPOUNDS TO LOWER THE FREEZING POINT OF MORTAR.

**APPLIED :**  
PER CENTURION STONE VENEER INSTALLATION PROCEDURES.

NOT TO SCALE



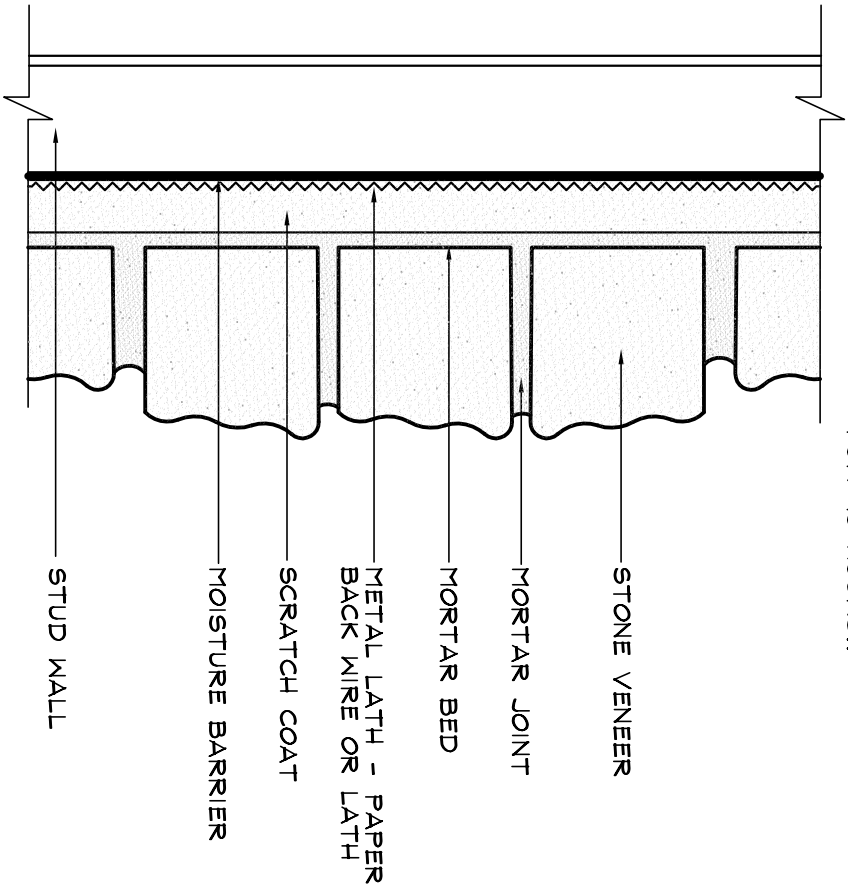
Centurion Products, Inc  
50 Van Buren Street  
Nashville, TN 37208  
www.centurionstone.com

STONE OVER RIGID INSULATION WALL

1.0.2

**WOOD FRAME CONSTRUCTION  
OPEN STUDS, NO SHEATHING**

**OVER OPEN STUDS**  
APPLY PAPER BACKED GALVANIZED 3.4lbs. 3/8" RIB EXPANDED METAL LATH TO THE STUDS USING GALVANIZED NAILS EVERY 6" VERTICALLY ON STUD CENTERS WITH A MIN. 1" PENETRATION. OVERLAP LATH SIDES NO LESS THAN 1/2" AND ENDS NO LESS THAN 1". FOR METAL STUDS USE CORROSION RESISTANT SELF-TAPPING SCREWS WITH A 3/8" HEAD THAT PROVIDES A MIN. 3/8" PENETRATION BEYOND THE INSIDE METAL SURFACE. APPLY 1/2" SCRATCH COAT OF MORTAR OVER LATH AND ALLOW TO SET FOR 48 HOURS..



**Specifications :**

**MOISTURE BARRIER :**  
EXTERIOR WOOD SURFACES ARE COVERED WITH A MOISTURE BARRIER CONFORMING TO SECTION 141 OF THE UNIFORM BUILDING CODE. BARRIER TO CONFORM WITH ASTM D-726 GRADE 15" BUILDING PAPER, ASPHALT SATURATED ORGANIC FELT NO. 15 OR A HOUSE WRAP PRODUCT. ONTT BARRIER ON INTERIOR INSTALLATIONS.

**METAL LATH :**  
A CORROSION RESISTANT EXPANDED METAL LATH WITH A MIN. RATING OF 2.5lbs. PER SQ. YARD THAT COMPLIES WITH ASTM D-726. USE GALVANIZED LATH FOR EXTERIOR APPLICATIONS. BLACK METAL (NON-GALVANIZED) MAY BE USED FOR INTERIOR APPLICATIONS.

**MORTAR MIX DESIGNS**

| GROUTED JOINT INSTALLATION |                    |                   |                             |            |
|----------------------------|--------------------|-------------------|-----------------------------|------------|
| MORTAR                     | PORTLAND CEMENT OR | MASONRY CEMENT    | HYDRATED LIME OR LIME PUTTY | SAND       |
| TYPE 5                     | CEMENT OR          | CEMENT            | OR LIME PUTTY               |            |
|                            | BLENDED            | TYPE (N)          |                             |            |
| -                          | 2                  | -                 | 1                           | 5 TO 7     |
| 3                          | -                  | -                 | -                           | 5 TO 7     |
| -                          | -                  | 1                 | -                           | 1.5 TO 2.5 |
| -                          | 1                  | -                 | 1                           | 1.5 TO 2.5 |
| MIX FOR DRY STACK SERIES   |                    |                   |                             |            |
| MORTAR                     | PORTLAND CEMENT OR |                   |                             | SAND       |
| TYPE 5                     | CEMENT OR          |                   |                             |            |
|                            | BLENDED            |                   |                             |            |
| -                          | 3                  | 1/2 PARTS THINSET | -                           | 7          |
| -                          | 2                  | BONDING AGENT     | 1 PART LIME                 | 7          |
| 3                          | -                  | BONDING AGENT     | -                           | 7          |

\* MUST BE LATEX MODIFIED THINSET FOR EXTERIOR USE MEETING ANSI A 118.4

THE MORTAR BED CONSISTENCY MUST ALLOW MORTAR TO BE SQUEEZED OUT AROUND ALL EDGES OF THE VENEER UNIT TO ASSURE FULL BOND. ALL JOINTS MUST BE TOOLED

**BONDING AGENT AND WATER (PRE-BLENDED [1])**  
CONCRETE BONDING AGENT : CONCRETE BONDING AGENTS SHALL MEET THE REQUIREMENTS OF ASTM C-1094 OR ASTM C-492.

**WEATHER CONDITIONS :**  
IN HOT WEATHER CONDITIONS IT MAY BECOME NECESSARY TO MOISTEN THE WALL BEFORE APPLYING THE SETTING COAT. WEATHER CONDITIONS MAY ALSO REQUIRE MOISTENING THE BACK OF EACH STONE. THIS IS BEST DONE USING A FINE SPRAY OF WATER OR A NET BRUSH. THIS STEP IS IMPORTANT TO PREVENT EXCESSIVE ABSORPTION OF MOISTURE FROM THE MORTAR. APPLICATIONS MUST BE PROTECTED FROM FREEZING TEMPERATURES BY SHEETING THE WALL AS MORTAR WILL NOT SET UP PROPERLY UNDER SUCH CONDITIONS. DO NOT USE ANTI-FREEZE COMPOUNDS TO LOWER THE FREEZING POINT OF MORTAR.

**APPLIED :**  
PER CENTURIUM STONE VENEER INSTALLATION PROCEDURES.

NOT TO SCALE



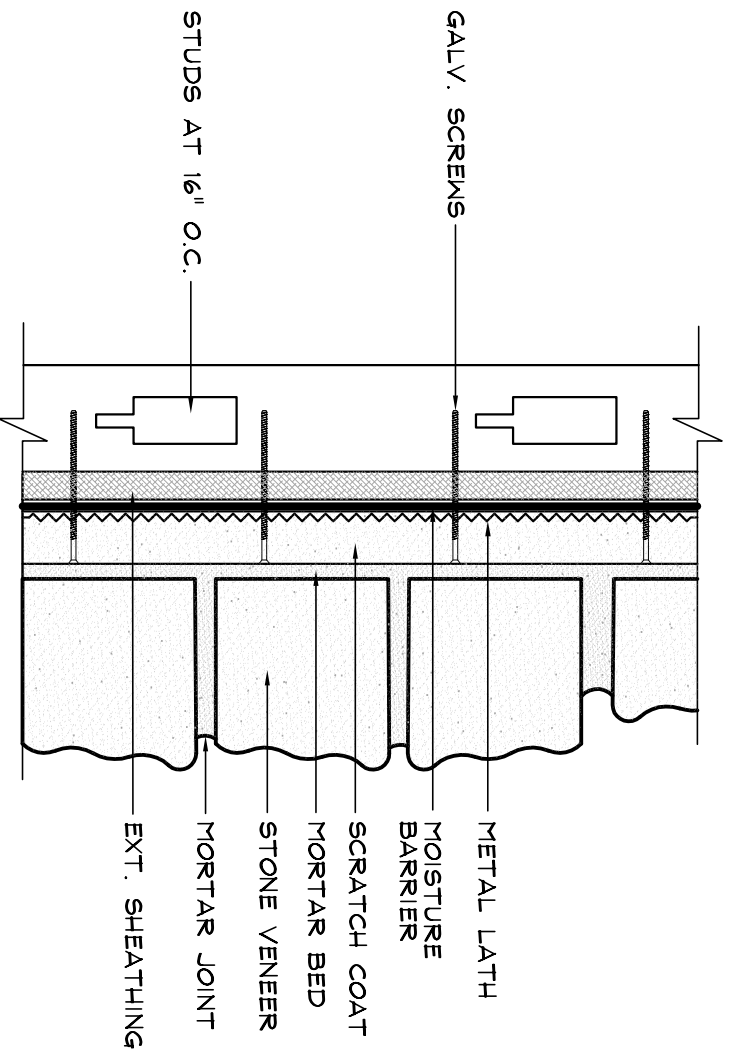
Centurion Products, Inc  
50 Van Buren Street  
Nashville, TN 37208  
www.centurionstone.com

**STONE OVER OPEN STUD**

1.0.3

## STONE OVER METAL FRAMING (RIGID SHEATHING)

**OVER RIGID INSULATION BOARD**  
PREPARE SURFACE SAME AS WOOD FRAME CONSTRUCTION WITH SHEATHING WITH THE FOLLOWING EXCEPTIONS : THE SCREWS SHOULD BE ON 4" CENTERS VERTICALLY AND 16" ON CENTERS HORIZONTALLY WITH 1" MINIMUM PENETRATING THE STUD



### Specifications :

**MOISTURE BARRIER :**  
EXTERIOR WOOD SURFACES ARE COVERED WITH A MOISTURE BARRIER CONFORMING TO SECTION 14.1 OF THE UNIFORM BUILDING CODE. BARRIER TO CONPLY WITH ASTM D-726 GRADE 15" BUILDING PAPER, ASPHALT SATURATED ORGANIC FELT NO. 15 OR A HOUSE WRAP PRODUCT. ONIT BARRIER ON INTERIOR INSTALLATIONS.

**METAL LATH :**  
A CORROSION RESISTANT EXPANDED METAL LATH WITH A MIN. RATING OF 2.59lb. PER SQ. YARD THAT COMPLIES WITH ASTM D-226. USE GALVANIZED LATH FOR EXTERIOR APPLICATIONS. BLACK METAL (NON-GALVANIZED) MAY BE USED FOR INTERIOR APPLICATIONS.

### MORTAR MIX DESIGNS

| GROUTED JOINT INSTALLATION |                          |                            |               |            |
|----------------------------|--------------------------|----------------------------|---------------|------------|
| MORTAR                     | PORTLAND CEMENT OR BLEND | MASONRY CEMENT OR TYPE (N) | HYDRATED LIME | SAND       |
| TYPE 5                     | CEMENT OR BLEND          | CEMENT                     | OR LIME PUTTY |            |
| -                          | 2                        | -                          | 1             | 5 TO 7     |
| 3                          | -                        | -                          | -             | 5 TO 7     |
| -                          | -                        | 1                          | -             | 1.5 TO 2.5 |
| -                          | 1                        | -                          | 1             | 1.5 TO 2.5 |
| MIX FOR DRY STACK SERIES   |                          |                            |               |            |
| MORTAR                     | PORTLAND CEMENT OR BLEND |                            |               | SAND       |
| TYPE 5                     | CEMENT OR BLEND          |                            |               |            |
| -                          | 3                        | 1/2 PARTS THICKET          | -             | 7          |
| -                          | 2                        | BONDING AGENT              | 1 PART LIME   | 7          |
| 3                          | -                        | BONDING AGENT              | -             | 7          |

\* MUST BE LATEX MODIFIED THINSET FOR EXTERIOR USE MEETING ANSI A 118.4

THE MORTAR BED CONSISTENCY MUST ALLOW MORTAR TO BE SQUEEZED OUT AROUND ALL EDGES OF THE VENEER UNIT TO ASSURE FULL BOND. ALL JOINTS MUST BE TOOLED

**BONDING AGENT AND WATER (PRE-BLENDED 1:1) CONCRETE BONDING AGENT :** CONCRETE BONDING AGENTS SHALL MEET THE REQUIREMENTS OF ASTM C-1094 OR ASTM C-492.

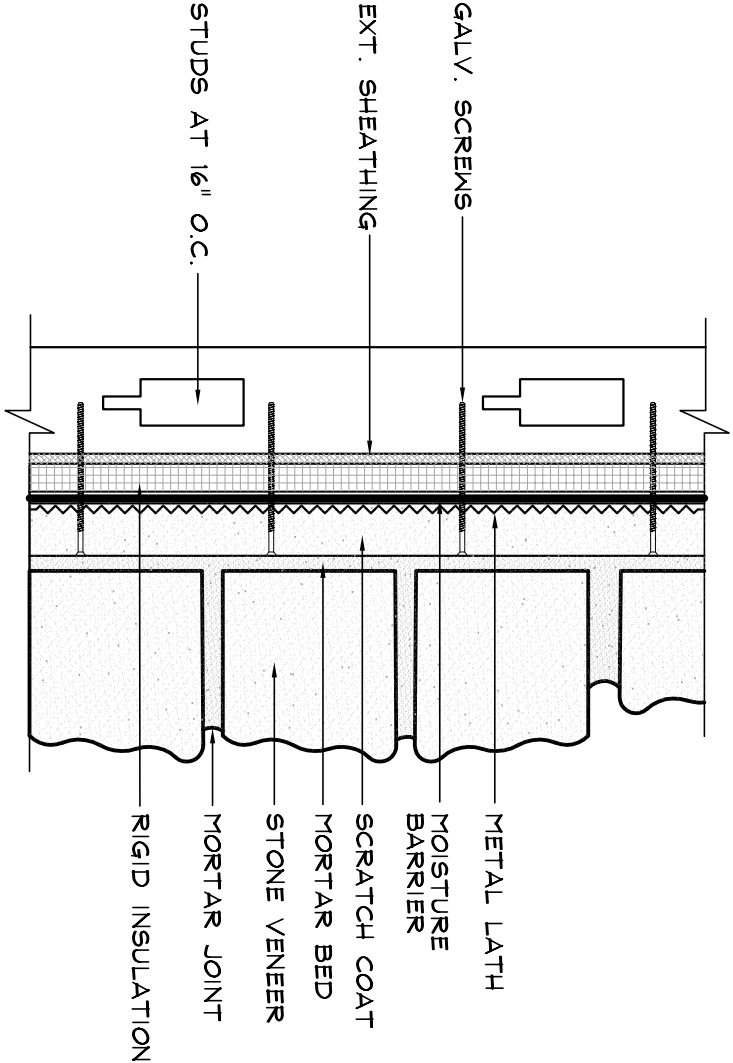
**WEATHER CONDITIONS :**  
IN HOT WEATHER CONDITIONS IT MAY BECOME NECESSARY TO MOISTEN THE WALL BEFORE APPLYING THE SETTING COAT. WEATHER CONDITIONS MAY ALSO REQUIRE MOISTENING THE BACK OF EACH STONE. THIS IS BEST DONE USING A FINE SPRAY OF WATER OR A NET BRUSH. THIS STEP IS IMPORTANT TO PREVENT EXCESSIVE ABSORPTION OF MOISTURE FROM THE MORTAR APPLICATIONS MUST BE PROTECTED FROM FREEZING TEMPERATURES BY SHEETING THE WALL AS MORTAR WILL NOT SET UP PROPERLY UNDER SUCH CONDITIONS. DO NOT USE ANTI-FREEZE COMPOUNDS TO LOWER THE FREEZING POINT OF MORTAR.

**APPLIED :**  
PER CENTURIUM STONE VENEER INSTALLATION PROCEDURES.

NOT TO SCALE

METAL FRAMING W/ RIGID INSULATION

**OVER RIGID INSULATION BOARD**  
PREPARE SURFACE SAME AS WOOD FRAME CONSTRUCTION WITH SHEATHING WITH THE FOLLOWING EXCEPTIONS : THE SCREWS SHOULD BE ON 4" CENTERS VERTICALLY AND 16" ON CENTERS HORIZONTALLY WITH 1" MINIMUM PENETRATING THE STUD



Specifications :

**MOISTURE BARRIER :**  
EXTERIOR WOOD SURFACES ARE COVERED WITH A MOISTURE BARRIER CONFORMING TO SECTION 141 OF THE UNIFORM BUILDING CODE. BARRIER TO CONFORM WITH ASTM D-726 GRADE 15" BUILDING PAPER, ASPHALT SATURATED ORGANIC FELT NO. 15 OR A HOUSE WOOD PRODUCT. ONIT BARRIER ON INTERIOR INSTALLATIONS.

**METAL LATH :**  
A CORROSION RESISTANT EXPANDED METAL LATH WITH A MIN. RATING OF 2.59in. PER SQ. YARD THAT COMPLIES WITH ASTM D-226. USE GALVANIZED LATH FOR EXTERIOR APPLICATIONS. BLACK METAL (NON-GALVANIZED) MAY BE USED FOR INTERIOR APPLICATIONS.

**MORTAR MIX DESIGNS**

| GROUTED JOINT INSTALLATION |                          |                            |               |            |
|----------------------------|--------------------------|----------------------------|---------------|------------|
| MORTAR                     | PORTLAND CEMENT OR BLEND | MASONRY CEMENT OR TYPE (N) | HYDRATED LIME | SAND       |
| TYPE 5                     | CEMENT OR BLEND          | CEMENT                     | OR LIME PUTTY |            |
|                            |                          |                            |               |            |
| -                          | 2                        | -                          | 1             | 5 TO 7     |
| 3                          | -                        | -                          | -             | 5 TO 7     |
| -                          | -                        | 1                          | -             | 1.5 TO 2.5 |
| -                          | 1                        | -                          | 1             | 1.5 TO 2.5 |
| MIX FOR DRY STACK SERIES   |                          |                            |               |            |
| MORTAR                     | PORTLAND CEMENT OR BLEND |                            |               | SAND       |
| TYPE 5                     | CEMENT OR BLEND          |                            |               |            |
|                            |                          |                            |               |            |
| -                          | 3                        | 1/2 PARTS THICKET          | -             | 7          |
| -                          | 2                        | BONDING AGENT              | 1 PART LIME   | 7          |
| 3                          | -                        | BONDING AGENT              | -             | 7          |

\* MUST BE LATEX MODIFIED THINSET FOR EXTERIOR USE MEETING ANSI A 118.4

THE MORTAR BED CONSISTENCY MUST ALLOW MORTAR TO BE SQUEEZED OUT AROUND ALL EDGES OF THE VENEER UNIT TO ASSURE FULL BOND. ALL JOINTS MUST BE TOOLED

**BONDING AGENT AND WATER (PRE-BLENDED [1])**  
CONCRETE BONDING AGENT : CONCRETE BONDING AGENTS SHALL MEET THE REQUIREMENTS OF ASTM C-1094 OR ASTM C-492.

**WEATHER CONDITIONS :**  
IN HOT WEATHER CONDITIONS IT MAY BECOME NECESSARY TO MOISTEN THE WALL BEFORE APPLYING THE SETTING COAT. WEATHER CONDITIONS MAY ALSO REQUIRE MOISTENING THE BACK OF EACH STONE. THIS IS BEST DONE USING A FINE SPRAY OF WATER OR A NET BRUSH. THIS STEP IS IMPORTANT TO PREVENT EXCESSIVE ABSORPTION OF MOISTURE FROM THE MORTAR. APPLICATIONS MUST BE PROTECTED FROM FREEZING TEMPERATURES BY SHEETING THE WALL AS MORTAR WILL NOT SET UP PROPERLY UNDER SUCH CONDITIONS. DO NOT USE ANTI-FREEZE COMPOUNDS TO LOWER THE FREEZING POINT OF MORTAR.

**APPLIED :**  
PER CENTURIUM STONE VENEER INSTALLATION PROCEDURES.

NOT TO SCALE



Centurion Products, Inc  
50 Van Buren Street  
Nashville, TN 37208  
www.centurionstone.com

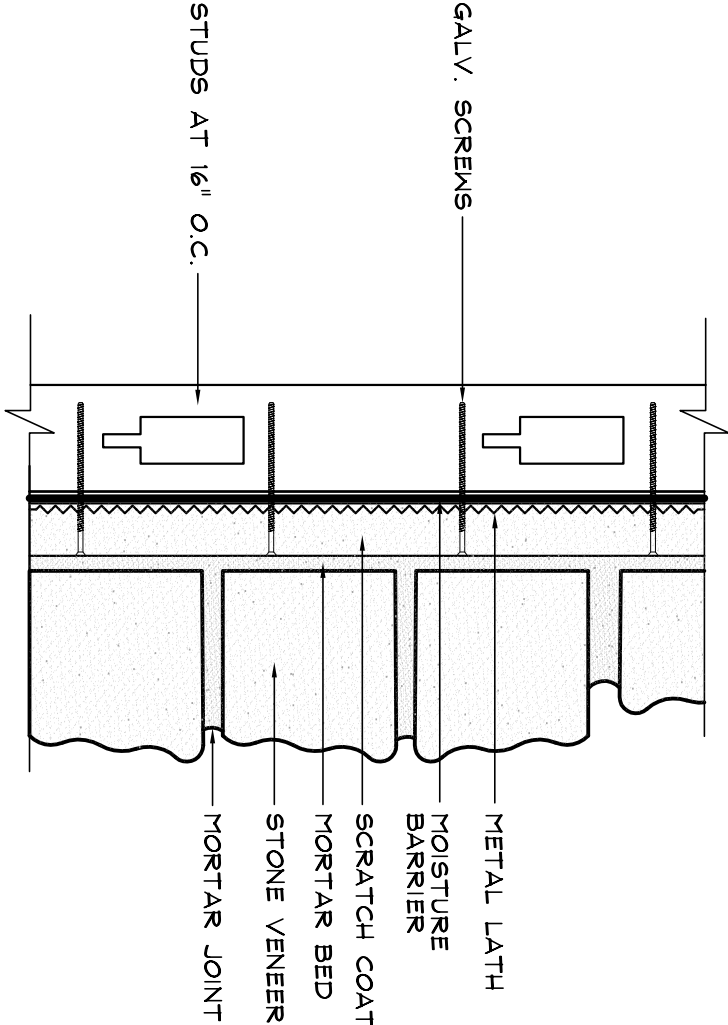
METAL FRAMING W/ RIGID INSULATION

1.0.5



**METAL FRAME CONSTRUCTION  
WITHOUT SHEATHING**

**OVER OPEN STUDS**  
APPLY PAPER BACKED GALVANIZED 3.4lbs.  
3/8" RIB EXPANDED METAL LATH TO THE  
STUDS USING GALVANIZED SCREWS EVERY 6"  
VERTICALLY ON STUD CENTERS WITH A MIN.  
1" PENETRATION. OVERLAP LATH SIDES NO  
LESS THAN 1/2" AND ENDS NO LESS THAN 1".  
FOR METAL STUDS USE CORROSION  
RESISTANT SELF-TAPPING SCREWS WITH A  
3/8" HEAD THAT PROVIDES A MIN. 3/8"  
PENETRATION BEYOND THE INSIDE METAL  
SURFACE. APPLY 1/2" SCRATCH COAT OF  
MORTAR OVER LATH AND ALLOW TO SET  
FOR 48 HOURS..



**Specifications :**

**MOISTURE BARRIER :**  
EXTERIOR WOOD SURFACES ARE COVERED WITH A MOISTURE BARRIER CONFORMING TO SECTION 141 OF THE UNIFORM BUILDING CODE. BARRIER TO CONFORM WITH ASTM D-726 GRADE 15' BUILDING PAPER, ASPHALT SATURATED ORGANIC FELT NO. 15 OR A HOUSE WRAP PRODUCT. ONIT BARRIER ON INTERIOR INSTALLATIONS.

**METAL LATH :**  
A CORROSION RESISTANT EXPANDED METAL LATH WITH A MIN. RATING OF 2.5lbs. PER SQ. YARD THAT COMPLIES WITH ASTM D-226. USE GALVANIZED LATH FOR EXTERIOR APPLICATIONS. BLACK METAL (NON-GALVANIZED) MAY BE USED FOR INTERIOR APPLICATIONS.

**MORTAR MIX DESIGNS**

| GROUTED JOINT INSTALLATION |                    |                   |                             |            |
|----------------------------|--------------------|-------------------|-----------------------------|------------|
| MORTAR                     | PORTLAND CEMENT OR | MASONRY CEMENT OR | HYDRATED LIME OR LIME PUTTY | SAND       |
| TYPE 5                     | CEMENT OR          | CEMENT            |                             |            |
|                            | BLENDED            | TYPE (N)          |                             |            |
| -                          | 2                  | -                 | 1                           | 5 TO 7     |
| 3                          | -                  | -                 | -                           | 5 TO 7     |
| -                          | -                  | 1                 | -                           | 1.5 TO 2.5 |
| -                          | 1                  | -                 | 1                           | 1.5 TO 2.5 |
| MIX FOR DRY STACK SERIES   |                    |                   |                             |            |
| MORTAR                     | PORTLAND CEMENT OR |                   |                             | SAND       |
| TYPE 5                     | CEMENT OR          |                   |                             |            |
|                            | BLENDED            |                   |                             |            |
| -                          | 3                  | 1/2 PARTS THINSET | -                           | 7          |
| -                          | 2                  | BONDING AGENT     | 1 PART LIME                 | 7          |
| 3                          | -                  | BONDING AGENT     | -                           | 7          |

\* MUST BE LATEX MODIFIED THINSET FOR EXTERIOR USE MEETING ANSI A 118.4

THE MORTAR BED CONSISTENCY MUST ALLOW MORTAR TO BE SQUEEZED OUT AROUND ALL EDGES OF THE VENEER UNIT TO ASSURE FULL BOND. ALL JOINTS MUST BE TOOLED

BONDING AGENT AND WATER (PRE-BLENDED [1])  
CONCRETE BONDING AGENT : CONCRETE BONDING AGENTS SHALL MEET THE REQUIREMENTS OF ASTM C-1094 OR ASTM C-492.

**WEATHER CONDITIONS :**  
IN HOT WEATHER CONDITIONS IT MAY BECOME NECESSARY TO MOISTEN THE WALL BEFORE APPLYING THE SETTING COAT. WEATHER CONDITIONS MAY ALSO REQUIRE MOISTENING THE BACK OF EACH STONE. THIS IS BEST DONE USING A FINE SPRAY OF WATER OR A NET BRUSH. THIS STEP IS IMPORTANT TO PREVENT EXCESSIVE ABSORPTION OF MOISTURE FROM THE MORTAR. APPLICATIONS MUST BE PROTECTED FROM FREEZING TEMPERATURES BY SHEETING THE WALL AS MORTAR WILL NOT SET UP PROPERLY UNDER SUCH CONDITIONS. DO NOT USE ANTI-FREEZE COMPOUNDS TO LOWER THE FREEZING POINT OF MORTAR.

APPLIED :  
PER CENTURION STONE VENEER INSTALLATION PROCEDURES.

NOT TO SCALE

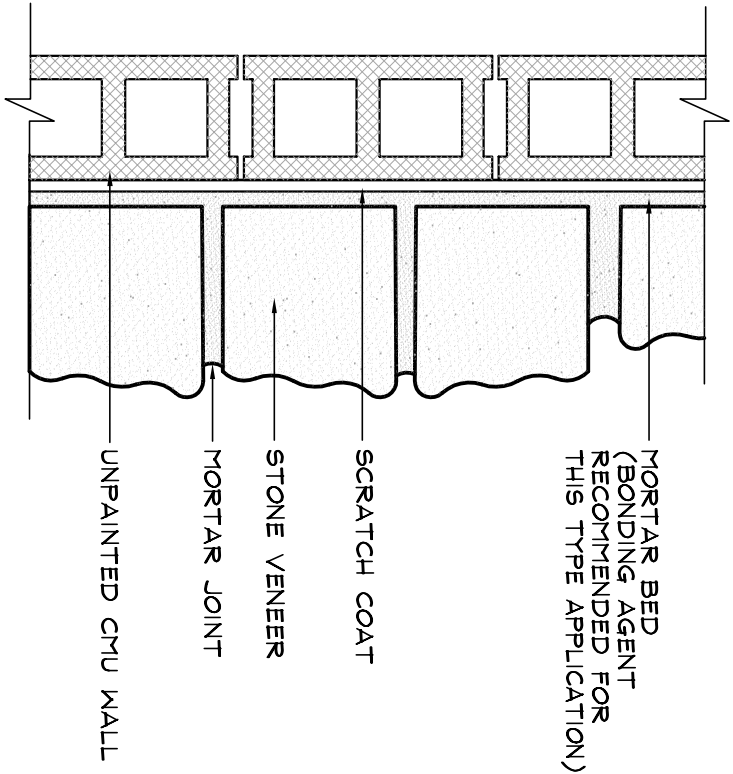


Centurion Products, Inc  
50 Van Buren Street  
Nashville, TN 37208  
www.centurionstone.com

**OPEN STUD FRAMING METAL STUD**

**OVER CLEAN MASONRY**  
NO SURFACE PREPARATION IS NECESSARY PROVIDED THE SURFACE IS CLEAN AND FREE OF CONTAMINATES SUCH AS DIRT, DUST, RELEASE AGENTS, SEALERS, AND FORM OILS.  
NOTE : SEE CENTURION INSTALLATION PROCEDURES FOR REMOVING THESE CONTAMINATES.

## STONE OVER CLEAN CMU WALLS



### Specifications :

#### MORTAR MIX DESIGNS

| GROUTED JOINT INSTALLATION |                          |                         |                             |            |
|----------------------------|--------------------------|-------------------------|-----------------------------|------------|
| MORTAR                     | PORTLAND CEMENT OR BLEND | MASONRY CEMENT TYPE (N) | HYDRATED LIME OR LIME PUTTY | SAND       |
| TYPE S                     | CEMENT OR BLEND          | TYPE (N)                |                             |            |
| -                          | 2                        | -                       | 1                           | 5 TO 7     |
| 3                          | -                        | -                       | -                           | 5 TO 7     |
| -                          | -                        | 1                       | -                           | 1.5 TO 2.5 |
| -                          | 1                        | -                       | 1                           | 1.5 TO 2.5 |

#### MIX FOR DRY STACK SERIES

| MORTAR | PORTLAND CEMENT OR BLEND | SAND                        |
|--------|--------------------------|-----------------------------|
| TYPE S | CEMENT OR BLEND          |                             |
| -      | 3                        | 1 2 PARTS THINSET - 7       |
| -      | 2                        | BONDING AGENT 1 PART LIME 7 |
| 3      | -                        | BONDING AGENT - 7           |

\* MUST BE LATEX MODIFIED THINSET FOR EXTERIOR USE MEETING ANSI A 108.4

THE MORTAR BED CONSISTENCY MUST ALLOW MORTAR TO BE SQUEEZED OUT AROUND ALL EDGES OF THE VENEER UNIT TO ASSURE FULL BOND. ALL JOINTS MUST BE TOOLED

BONDING AGENT AND WATER (PRE-BLENDED 1:1)  
CONCRETE BONDING AGENT : CONCRETE BONDING AGENTS SHALL MEET THE REQUIREMENTS OF ASTM C-1094 OR ASTM C-992.

**WEATHER CONDITIONS :**  
IN HOT WEATHER CONDITIONS IT MAY BECOME NECESSARY TO MOISTEN THE WALL BEFORE APPLYING THE SETTING COAT. WEATHER CONDITIONS MAY ALSO REQUIRE MOISTENING THE BACK OF EACH STONE. THIS IS BEST DONE USING A FINE SPRAY OF WATER OR A WET BRUSH. THIS STEP IS IMPORTANT TO PREVENT EXCESSIVE ABSORPTION OF MOISTURE FROM THE MORTAR APPLICATIONS. MUST BE PROTECTED FROM FREEZING TEMPERATURES BY SHELTERING THE WALL AS MORTAR WILL NOT SET UP PROPERLY UNDER SUCH CONDITIONS. DO NOT USE ANTIFREEZE COMPOUNDS TO LOWER THE FREEZING POINT OF MORTAR.

APPLIED :  
PER CENTURION STONE VENEER INSTALLATION PROCEDURES.

NOT TO SCALE



**Centurion**  
STONE

Centurion Products, Inc  
50 Van Buren Street  
Nashville, TN 37208  
www.centurionstone.com

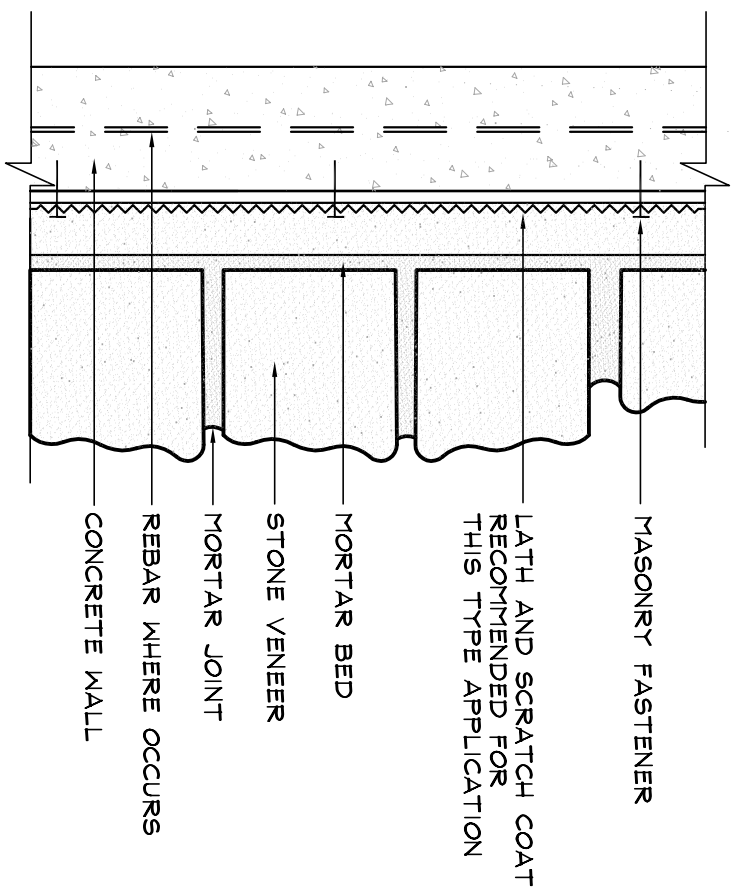
## STONE OVER CLEAN CMU WALLS

1.0.7

**OVER CLEAN MASONRY**  
 NO SURFACE PREPARATION IS NECESSARY PROVIDED THE SURFACE IS CLEAN AND FREE OF CONTAMINATES SUCH AS DIRT, DUST, RELEASE AGENTS, SEALERS, AND FORM OILS.

**NOTE :** EVEN AFTER CLEANING OR SANDBLASTING, RELEASE AGENTS, SEALERS, OILS AND ANTI-BONDING MATERIALS ARE OFTEN NOT DETECTABLE. IT IS HIGHLY RECOMMENDED TO FOLLOW SPECIFICATIONS FOR LATH AND SCRATCH COAT PROCEDURES.

### STONE OVER PRECAST AND TILT UP WALLS



**Specifications :** SEE LATH APPLICATION INSTRUCTIONS  
**MORTAR MIX DESIGNS**

| GROUTED JOINT INSTALLATION |                          |                         |               |            |
|----------------------------|--------------------------|-------------------------|---------------|------------|
| MORTAR                     | PORTLAND CEMENT OR BLEND | MASONRY CEMENT TYPE (N) | HYDRATED LIME | SAND       |
| TYPE 5                     | CEMENT OR BLEND          | CEMENT TYPE (N)         | OR LIME PUTTY |            |
| -                          | 2                        | -                       | 1             | 5 TO 7     |
| 3                          | -                        | -                       | -             | 5 TO 7     |
| -                          | -                        | 1                       | -             | 1.5 TO 2.5 |
| -                          | 1                        | -                       | 1             | 1.5 TO 2.5 |

| MIX FOR DRY STACK SERIES |                          |                   |             |      |
|--------------------------|--------------------------|-------------------|-------------|------|
| MORTAR                   | PORTLAND CEMENT OR BLEND | 1/2 PARTS THINSET | 1 PART LIME | SAND |
| TYPE 5                   | CEMENT OR BLEND          |                   |             |      |
| -                        | 3                        | -                 | -           | 7    |
| -                        | 2                        | BONDING AGENT     | 1 PART LIME | 7    |
| 3                        | -                        | BONDING AGENT     | -           | 7    |

\* MUST BE LATEX MODIFIED THINSET FOR EXTERIOR USE MEETING ANSI A 108.4

THE MORTAR BED CONSISTENCY MUST ALLOW MORTAR TO BE SQUEEZED OUT AROUND ALL EDGES OF THE VENEER UNIT TO ASSURE FULL BOND. ALL JOINTS MUST BE TOOLED  
 BONDING AGENT AND WATER (PRE-BLENDED 1:1)  
 CONCRETE BONDING AGENT : CONCRETE BONDING AGENTS SHALL MEET THE REQUIREMENTS OF ASTM C-1094 OR ASTM C-992.

**WEATHER CONDITIONS :**  
 IN HOT WEATHER CONDITIONS IT MAY BECOME NECESSARY TO MOISTEN THE WALL BEFORE APPLYING THE SETTING COAT. WEATHER CONDITIONS MAY ALSO REQUIRE MOISTENING THE BACK OF EACH STONE. THIS IS BEST DONE USING A FINE SPRAY OF WATER OR A WET BRUSH. THIS STEP IS IMPORTANT TO PREVENT EXCESSIVE ABSORPTION OF MOISTURE FROM THE MORTAR APPLICATIONS MUST BE PROTECTED FROM FREEZING TEMPERATURES BY SHELTERING THE WALL AS MORTAR WILL NOT SET UP PROPERLY UNDER SUCH CONDITIONS. DO NOT USE ANTIFREEZE COMPOUNDS TO LOWER THE FREEZING POINT OF MORTAR.  
 APPLIED :  
 PER CENTURION STONE VENEER INSTALLATION PROCEDURES.

NOT TO SCALE

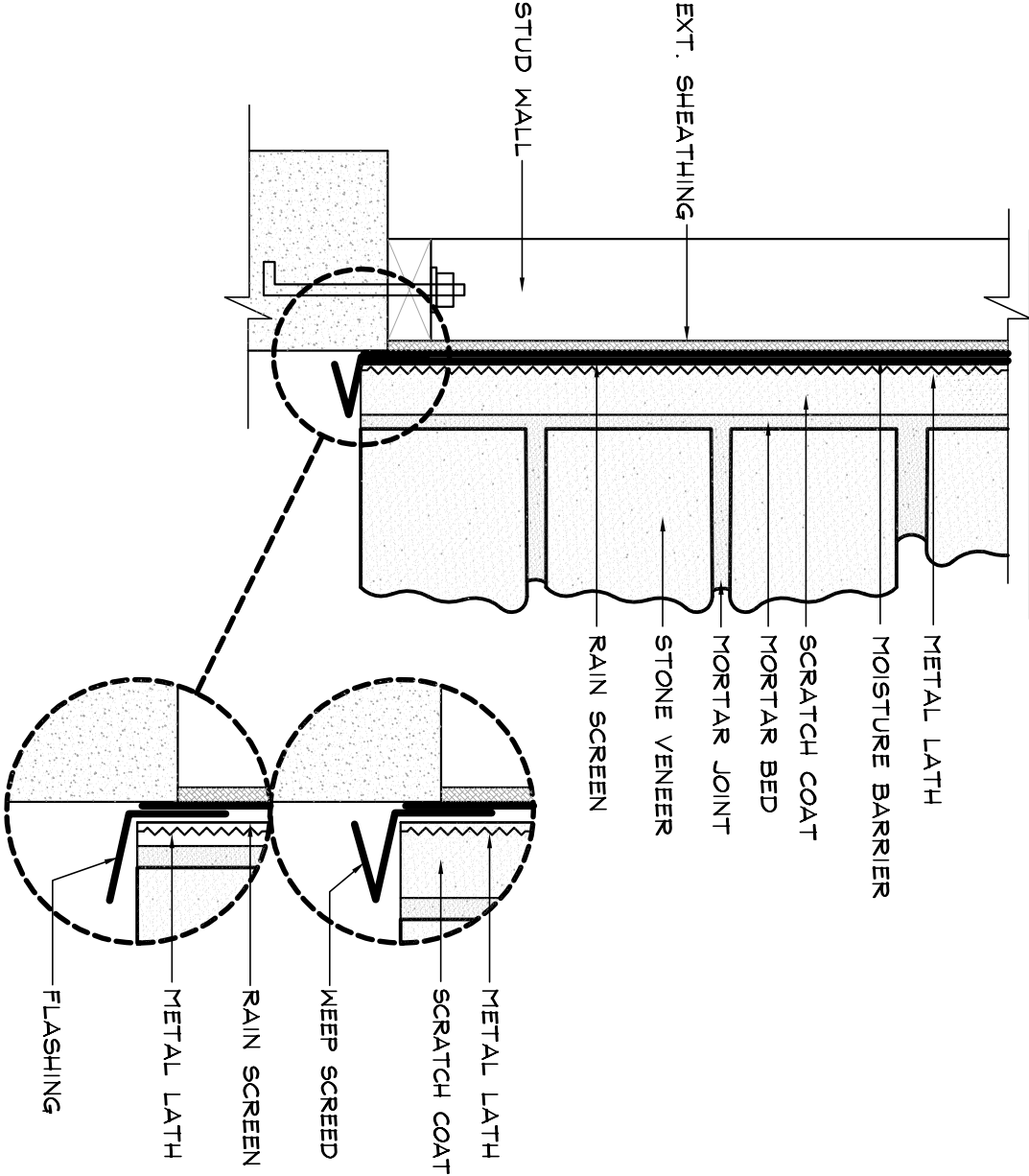


Centurion Products, Inc  
 50 Van Buren Street  
 Nashville, TN 37208  
 www.centurionstone.com

### STONE OVER PRECAST AND TILT UP WALLS

I.0.8

# STONE VENEER W/ WEEP SCREED/RAIN SCREEN



## Specifications :

**WEEP SCREED**  
INSTALL FOUNDATION WEEP SCREED PER MANUFACTURE'S INSTRUCTIONS. WEEP SCREED SHALL BE A MINIMUM NO. 26 GAUGE GALV. METAL CORROSION RESISTANT SCREED WITH A MINIMUM VERTICAL ATTACHMENT OF 3 1/2". HOLES IN SCREED SHOULD BE A MINIMUM OF 3/16" SPACED ON MAXIMUM 33" CENTERS. WEEP SCREED SHALL BE PLACED A MINIMUM OF 4" ABOVE EARTH OR 2" ABOVE PAVED AREA. SCREED SHOULD BE THE TYPE THAT ALLOWS TRAPPED WATER TO DRAIN TO THE EXTERIOR OF THE BUILDING.

**APPLIED :**  
PER CENTURION STONE VENEER INSTALLATION PROCEDURES.

NOT TO SCALE

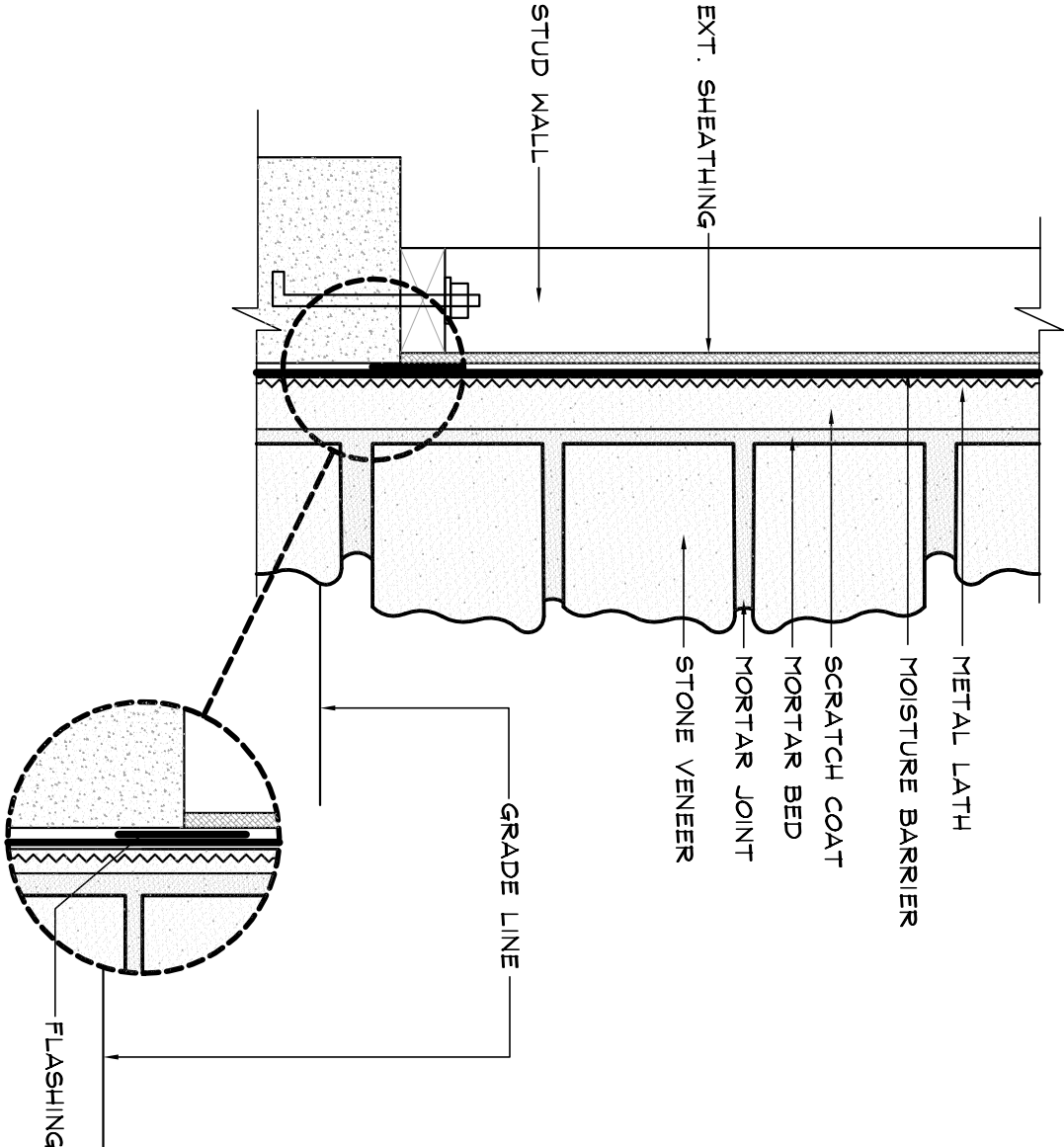


Centurion Products, Inc  
50 Van Buren Street  
Nashville, TN 37208  
www.centurionstone.com

STONE VENEER W/ WEEP  
SCREED/RAIN SCREEN

J.0.1

**STONE VENEER / GRADE LINE**



**Specifications :**

STONE VENEER MAY BE APPLIED TO OR BELOW GRADE PROVIDING IT MEETS LOCAL BUILDING CODE REQUIREMENTS. IN AREAS WHERE GROUND HEAVING OCCURS, IT IS NOT RECOMMENDED.

**MOISTURE BARRIER :**

EXTERIOR WOOD SURFACES ARE COVERED WITH A MOISTURE BARRIER CONFORMING TO SECTION 4-1 OF THE UNIFORM BUILDING CODE. BARRIER TO COMPLY WITH ASTM D-226 GRADE 'D' BUILDING PAPER, ASPHALT SATURATED ORGANIC FELT NO. 15 OR A HOUSE MADE PRODUCT. ONIT BARRIER ON INTERIOR INSTALLATIONS.

**METAL LATH :**

A CORROSION RESISTANT EXPANDED METAL LATH WITH A MIN. RATING OF 23lbs. PER SQ. YARD THAT COMPLIES WITH ASTM D-226. USE GALVANIZED LATH FOR EXTERIOR APPLICATIONS. BLACK METAL (NON-GALVANIZED) MAY BE USED FOR INTERIOR APPLICATIONS.

**MORTAR MIX DESIGNS**

| ROUTED JOINT INSTALLATION |           |                   |               |            |
|---------------------------|-----------|-------------------|---------------|------------|
| MORTAR                    | PORTLAND  | MASONRY           | HYDRATED LIME | SAND       |
| TYPE S                    | CEMENT OR | CEMENT            | OR LIME PUTTY |            |
|                           | BLENDED   | TYPE (N)          |               |            |
| -                         | 2         | -                 | 1             | 5 TO 7     |
| 3                         | -         | -                 | -             | 5 TO 7     |
| -                         | -         | 1                 | -             | 1.5 TO 2.5 |
| -                         | 1         | -                 | 1             | 1.5 TO 2.5 |
| MIX FOR DRY STACK SERIES  |           |                   |               |            |
| MORTAR                    | PORTLAND  |                   |               | SAND       |
| TYPE S                    | CEMENT OR |                   |               |            |
|                           | BLENDED   |                   |               |            |
| -                         | 3         | 1/2 PARTS THINSET | -             | 7          |
| -                         | 2         | BONDING AGENT     | 1 PART LIME   | 7          |
| 3                         | -         | BONDING AGENT     | -             | 7          |

\* MUST BE LATEX MODIFIED THINSET FOR EXTERIOR USE MEETING ANSI A 108.4

THE MORTAR BED CONSISTENCY MUST ALLOW MORTAR TO BE SQUEEZED OUT AROUND ALL EDGES OF THE VENEER UNIT TO ASSURE FULL BOND. ALL JOINTS MUST BE TOOLED

**BONDING AGENT AND WATER (PRE-BLENDED H)**

CONCRETE BONDING AGENT : CONCRETE BONDING AGENTS SHALL MEET THE REQUIREMENTS OF ASTM C-1094 OR ASTM C-982.

**WEATHER CONDITIONS :**

IN HOT WEATHER CONDITIONS IT MAY BECOME NECESSARY TO MOISTEN THE WALL BEFORE APPLYING THE SETTING COAT. WEATHER CONDITIONS MAY ALSO REQUIRE TIGHTENING THE BACK OF EACH STONE. THIS IS BEST DONE USING A FINE SPRAY OF WATER OR A MIST BUSH. THIS STEP IS IMPORTANT TO PREVENT EXCESSIVE ABSORPTION OF MOISTURE FROM THE MORTAR APPLICATIONS MUST BE PROTECTED FROM FREEZING TEMPERATURES BY SHEETING THE WALL AS MORTAR WILL NOT SET UP PROPERLY UNDER SUCH CONDITIONS. DO NOT USE ANTI-FREEZE COMPOUNDS TO LOWER THE FREEZING POINT OF MORTAR.

**APPLIED :**

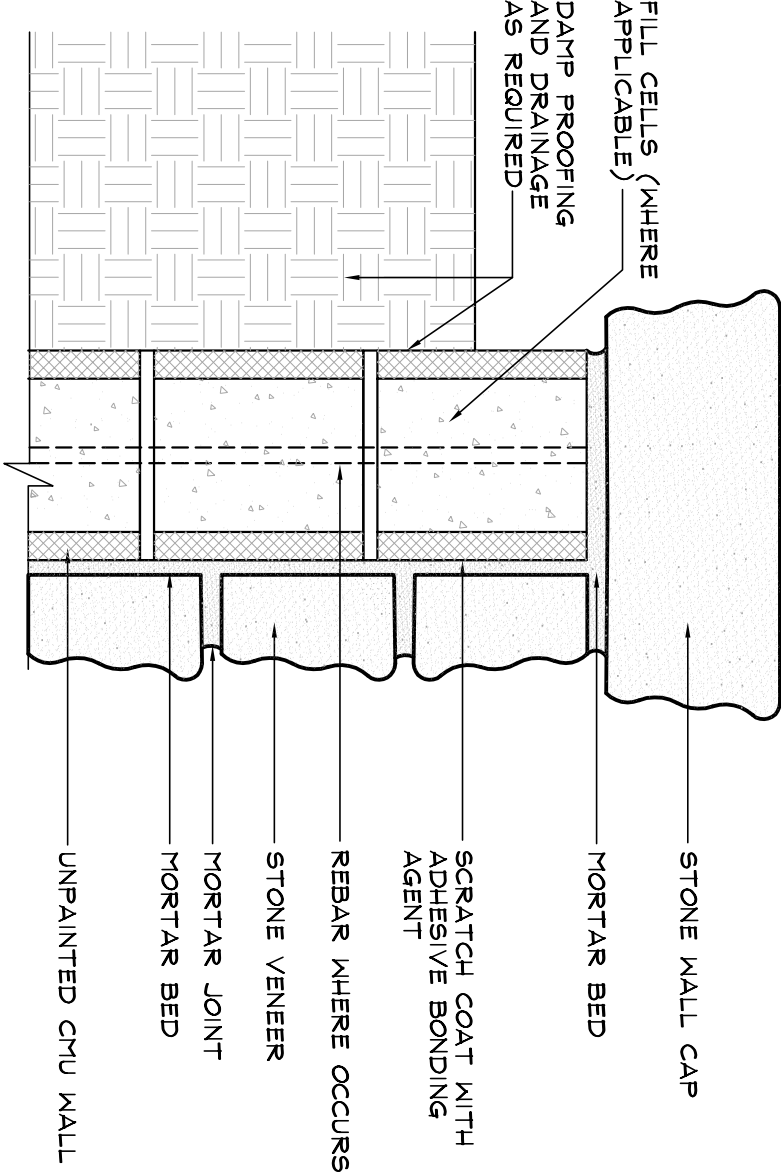
PER CENTURION STONE VENEER INSTALLATION PROCEDURES.

NOT TO SCALE

| CMU WALL | WALL CAP         |
|----------|------------------|
| 8"       | FLATCAP P555     |
|          | BEVELED CAP P571 |
| 12"      | BEVELED CAP P572 |

**OVER CLEAN MASONRY**  
**NO SURFACE PREPARATION IS NECESSARY**  
 PROVIDED THE SURFACE IS CLEAN AND  
 FREE OF CONTAMINATES SUCH AS DIRT,  
 DUST, RELEASE AGENTS, SEALERS, AND  
 FORM OILS.  
**NOTE : SEE CENTURION INSTALLATION**  
**PROCEDURES FOR REMOVING THESE**  
**CONTAMINATES.**

CMU WALL / STONE ON ONE SIDE



Specifications :  
**MORTAR MIX DESIGNS**

| GROUTED JOINT INSTALLATION |           |                   |               |            |
|----------------------------|-----------|-------------------|---------------|------------|
| MORTAR                     | PORTLAND  | MASONRY           | HYDRATED LIME | SAND       |
| TYPE 5                     | CEMENT OR | CEMENT            | OR LIME PUTTY |            |
|                            | BLENDED   | TYPE (N)          |               |            |
| -                          | 2         | -                 | 1             | 5 TO 7     |
| 3                          | -         | -                 | -             | 5 TO 7     |
| -                          | -         | 1                 | -             | 1.5 TO 2.5 |
| -                          | 1         | -                 | 1             | 1.5 TO 2.5 |
| MIX FOR DRY STACK SERIES   |           |                   |               |            |
| MORTAR                     | PORTLAND  |                   |               | SAND       |
| TYPE 5                     | CEMENT OR |                   |               |            |
|                            | BLENDED   |                   |               |            |
| -                          | 3         | * 2 PARTS THINSET | -             | 7          |
| -                          | 2         | BONDING AGENT     | 1 PART LIME   | 7          |
| 3                          | -         | BONDING AGENT     | -             | 7          |

\* MUST BE LATEX MODIFIED THINSET FOR EXTERIOR USE MEETING ANSI A 118.4

\* MUST BE LATEX MODIFIED THINSET FOR EXTERIOR USE MEETING ANSI A 108.4

THE MORTAR BED CONSISTENCY MUST ALLOW MORTAR TO BE SQUEEZED OUT AROUND ALL EDGES OF THE VENEER UNIT TO ASSURE FULL BOND. ALL JOINTS MUST BE TOOLED

BONDING AGENT AND WATER (PRE-BLENDED [1])  
 CONCRETE BONDING AGENT : CONCRETE BONDING AGENTS SHALL MEET THE REQUIREMENTS OF ASTM C-1094 OR ASTM C-982.

WEATHER CONDITIONS :  
 IN HOT WEATHER CONDITIONS IT MAY BECOME NECESSARY TO MOISTEN THE WALL BEFORE APPLYING THE SETTING COAT. WEATHER CONDITIONS MAY ALSO REQUIRE MOISTENING THE BACK OF EACH STONE. THIS IS BEST DONE USING A FINE SPRAY OF WATER OR A NET BRUSH. THIS STEP IS IMPORTANT TO PREVENT EXCESSIVE ABSORPTION OF MOISTURE FROM THE MORTAR. APPLICATIONS MUST BE PROTECTED FROM FREEZING TEMPERATURES BY SHELTERING THE WALL AS MORTAR WILL NOT SET UP PROPERLY UNDER SUCH CONDITIONS. DO NOT USE ANTIFREEZE COMPOUNDS TO LOWER THE FREEZING POINT OF MORTAR.

APPLIED :  
 PER CENTURION STONE VENEER INSTALLATION PROCEDURES.

NOT TO SCALE



Centurion Products, Inc  
 50 Van Buren Street  
 Nashville, TN 37208  
[www.centurionstone.com](http://www.centurionstone.com)

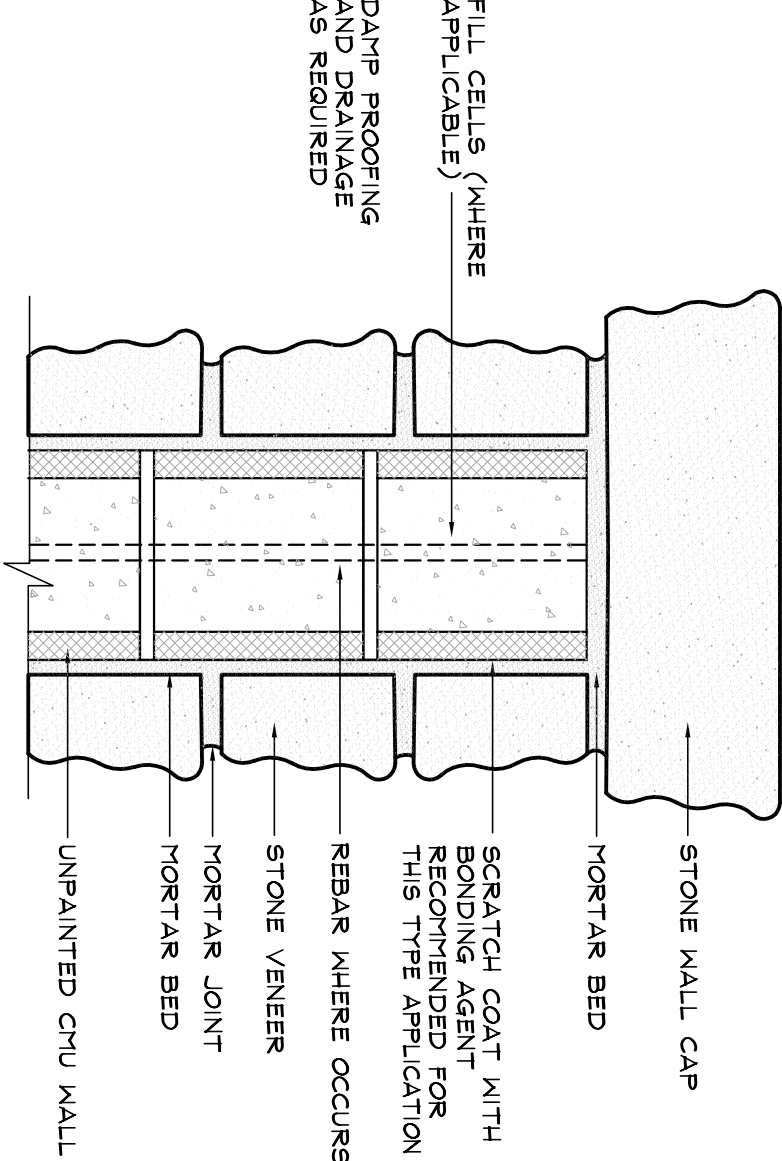
CMU WALL / STONE ON ONE SIDE

K.O.1

| CMU WALL | WALL CAP         |
|----------|------------------|
| 8"       | FLATCAP P555     |
|          | BEVELED CAP P571 |
| 12"      | BEVELED CAP P572 |

**OVER CLEAN MASONRY**  
**NO SURFACE PREPARATION IS NECESSARY**  
**PROVIDED THE SURFACE IS CLEAN AND**  
**FREE OF CONTAMINATES SUCH AS DIRT,**  
**DUST, RELEASE AGENTS, SEALERS, AND**  
**FORM OILS.**  
**NOTE : SEE CENTURION INSTALLATION**  
**PROCEDURES FOR REMOVING THESE**  
**CONTAMINATES.**

## CMU WALL / STONE ON BOTH SIDES



### Specifications :

#### MORTAR MIX DESIGNS

| GROUTED JOINT INSTALLATION |           |          |               |            |
|----------------------------|-----------|----------|---------------|------------|
| MORTAR                     | PORTLAND  | MASONRY  | HYDRATED LIME | SAND       |
| TYPE 5                     | CEMENT OR | CEMENT   | OR LIME PUTTY |            |
|                            | BLEND     | TYPE (N) |               |            |
| -                          | 2         | -        | 1             | 5 TO 7     |
| 3                          | -         | -        | -             | 5 TO 7     |
| -                          | -         | 1        | -             | 1.5 TO 2.5 |
| -                          | 1         | -        | 1             | 1.5 TO 2.5 |

#### MIX FOR DRY STACK SERIES

| MORTAR | PORTLAND  |                   |             | SAND |
|--------|-----------|-------------------|-------------|------|
| TYPE 5 | CEMENT OR |                   |             |      |
|        | BLEND     |                   |             |      |
| -      | 3         | 1/2 PARTS THINSET | -           | 7    |
| -      | 2         | BONDING AGENT     | 1 PART LIME | 7    |
| 3      | -         | BONDING AGENT     | -           | 7    |

\* MUST BE LATEX MODIFIED THINSET FOR EXTERIOR USE MEETING ANSI A 118.4

THE MORTAR BED CONSISTENCY MUST ALLOW MORTAR TO BE SQUEEZED OUT AROUND ALL EDGES OF THE VENEER UNIT TO ASSURE FULL BOND. ALL JOINTS MUST BE TOOLED

BONDING AGENT AND WATER (PRE-BLENDED H)  
 CONCRETE BONDING AGENT : CONCRETE BONDING AGENTS SHALL MEET THE REQUIREMENTS OF ASTM C-1094 OR ASTM C-992.

WEATHER CONDITIONS :  
 IN HOT WEATHER CONDITIONS IT MAY BECOME NECESSARY TO MOISTEN THE WALL BEFORE APPLYING THE SETTING COAT. WEATHER CONDITIONS MAY ALSO REQUIRE MOISTENING THE BACK OF EACH STONE. THIS IS BEST DONE USING A FINE SPRAY OF WATER OR A MIST BRUSH. THIS STEP IS IMPORTANT TO PREVENT EXCESSIVE ABSORPTION OF MORTAR FROM THE MORTAR APPLICATIONS MUST BE PROTECTED FROM FREEZING TEMPERATURES BY SHEETING THE WALL AS MORTAR WILL NOT SET UP PROPERLY UNDER SUCH CONDITIONS. DO NOT USE ANTI-FREEZE COMPOUNDS TO LOWER THE FREEZING POINT OF MORTAR.

APPLIED :  
 PER CENTURION STONE VENEER INSTALLATION PROCEDURES.

NOT TO SCALE

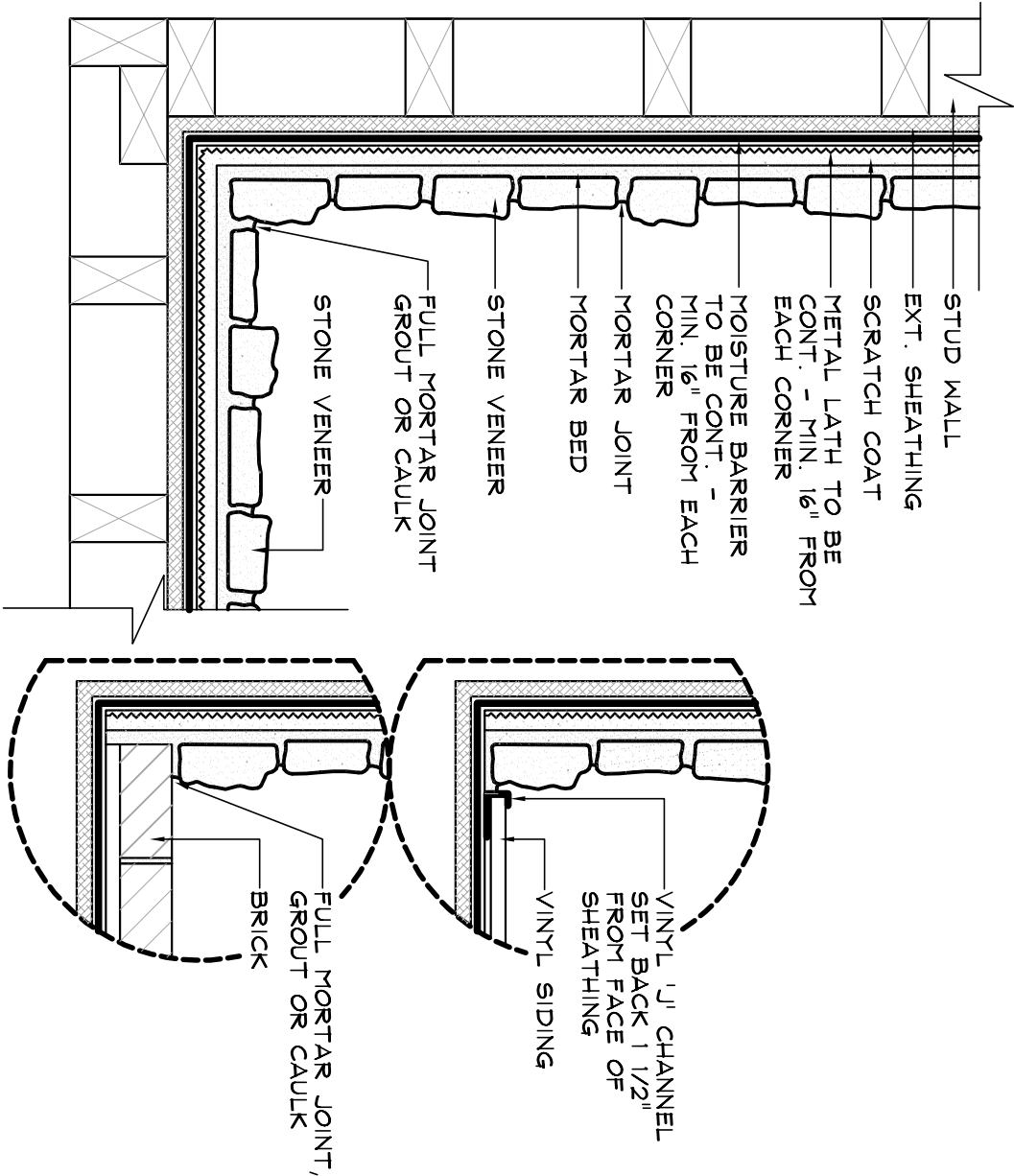


Centurion Products, Inc  
 50 Van Buren Street  
 Nashville, TN 37208  
[www.centurionstone.com](http://www.centurionstone.com)

CMU WALL / STONE ON BOTH SIDES

K.0.2

INSIDE CORNER DETAIL



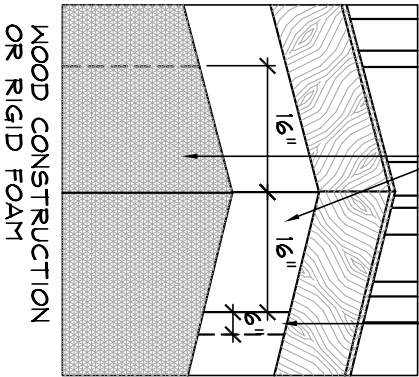
Specifications :

INSTALL THE CORNERS FIRST FOR EASIEST FITTING, PIECES SHOULD BE ALTERNATED IN OPPOSITE DIRECTIONS ON THE WALL CORNER.

DOUBLE LAP METAL LATH A MINIMUM 16 INCHES AROUND ALL INSIDE AND OUTSIDE CORNERS. DO NOT PULL LATH TO TIGHTLY AT CORNERS OR EDGES.

APPLIED :  
PER CENTURION STONE VENEER  
INSTALLATION PROCEDURES.

LAP BARRIER 6" ON  
VERT. JOINTS AND  
MIN. OF 2" ON  
HORIZ. JOINT  
LAP BARRIER AND  
LATH A MIN. OF 16"  
FROM INSIDE AND  
OUTSIDE CORNERS



NOT TO SCALE



Centurion  
STONE

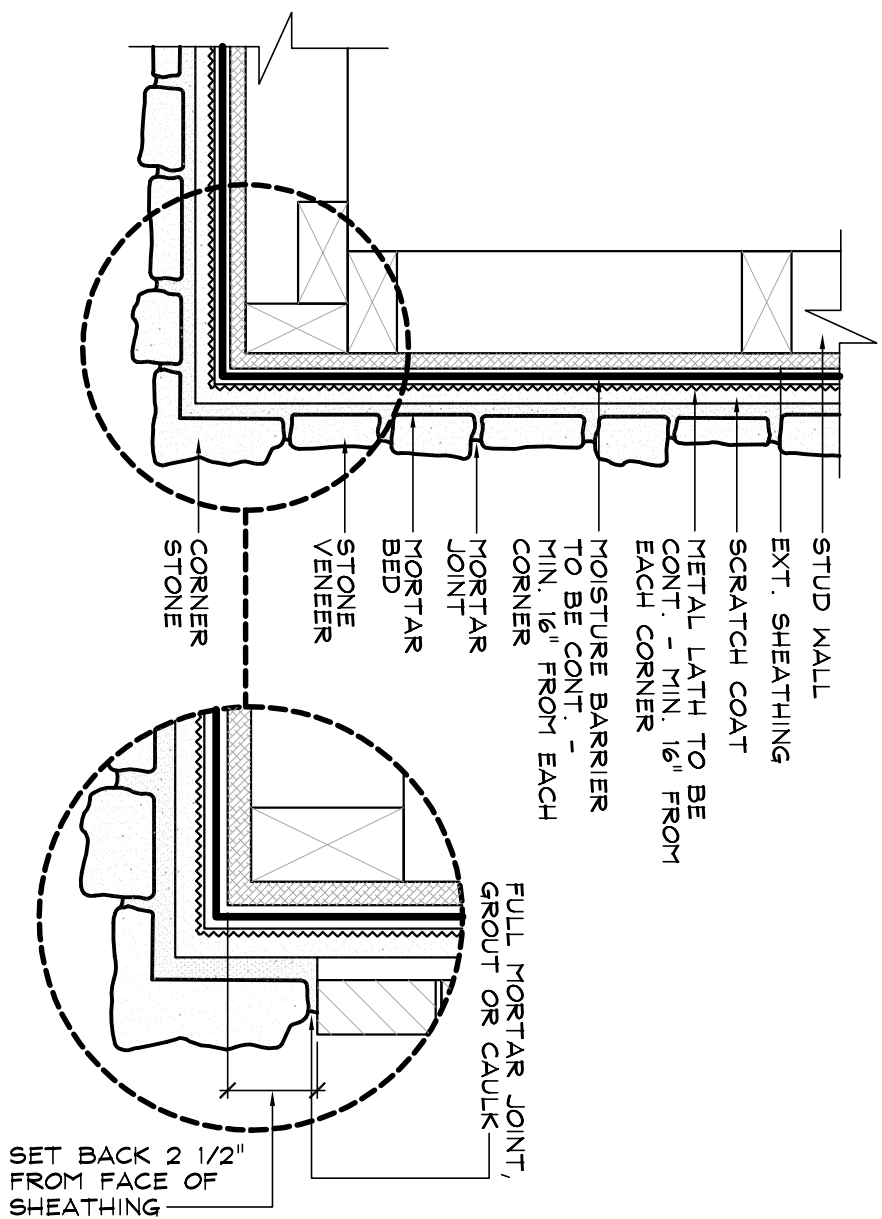
Centurion Products, Inc  
50 Van Buren Street  
Nashville, TN 37208  
www.centurionstone.com

INSIDE CORNER DETAIL

M.O.1



OUTSIDE CORNER DETAIL



Specifications :

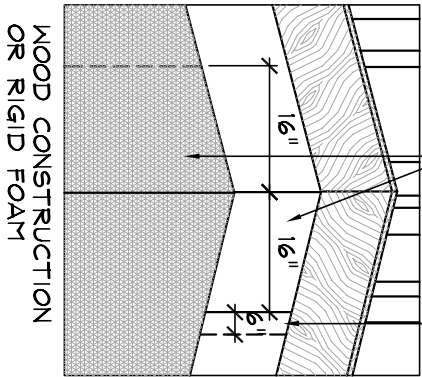
INSTALL THE CORNERS FIRST FOR EASIEST FITTING, PIECES SHOULD BE ALTERNATED IN OPPOSITE DIRECTIONS ON THE WALL CORNER.

DOUBLE LAP METAL LATH A MINIMUM 16 INCHES AROUND ALL INSIDE AND OUTSIDE CORNERS. DO NOT PULL LATH TO TIGHTLY AT CORNERS OR EDGES.

APPLIED :  
PER CENTURION STONE VENEER  
INSTALLATION PROCEDURES.

LAP BARRIER 6" ON  
VERT. JOINTS AND  
MIN. OF 2" ON  
HORIZ. JOINT

LAP BARRIER AND  
LATH A MIN. OF 16"  
FROM INSIDE AND  
OUTSIDE CORNERS



NOT TO SCALE

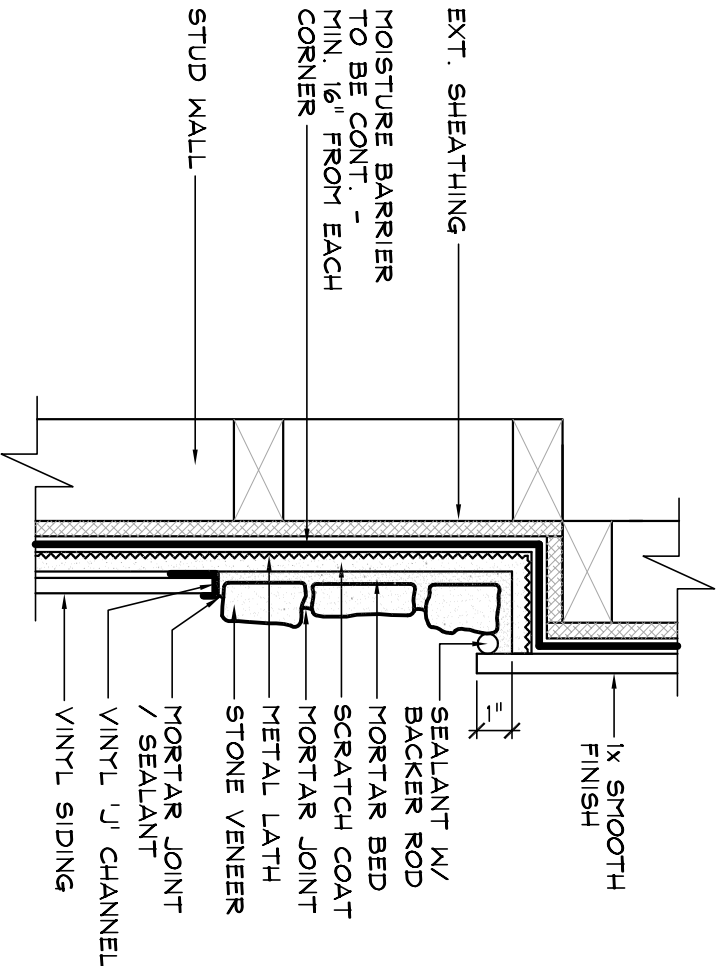


Centurion Products, Inc  
50 Van Buren Street  
Nashville, TN 37208  
[www.centurionstone.com](http://www.centurionstone.com)

OUTSIDE CORNER DETAIL

M.0.2

TRANSITION STONE TO SIDING



Specifications :

**MOISTURE BARRIER :**  
EXTERIOR WOOD SURFACES ARE COVERED WITH A MOISTURE BARRIER CONFORMING TO SECTION 141 OF THE UNIFORM BUILDING CODE. BARRIER TO COMPLY WITH ASTM D-726 GRADE 'D' BUILDING PAPER, ASPHALT SATURATED ORGANIC FELT NO. 15 OR A HOUSE WRAP PRODUCT. ONIT BARRIER ON INTERIOR INSTALLATIONS.

**METAL LATH :**  
A CORROSION RESISTANT EXPANDED METAL LATH WITH A MIN. RATING OF 250K PER SQ. YARD THAT COMPLIES WITH ASTM D-226. USE GALVANIZED LATH FOR EXTERIOR APPLICATIONS. BLACK METAL (NON-GALVANIZED) MAY BE USED FOR INTERIOR APPLICATIONS.

MORTAR MIX DESIGNS

| GROUTED JOINT INSTALLATION |                            |                            |               |            |
|----------------------------|----------------------------|----------------------------|---------------|------------|
| MORTAR                     | PORTLAND CEMENT OR BLENDED | MASONRY CEMENT OR TYPE (N) | HYDRATED LIME | SAND       |
| TYPE S                     | CEMENT OR BLENDED          | CEMENT                     | OR LIME PUTTY |            |
| -                          | 2                          | -                          | 1             | 5 TO 7     |
| 3                          | -                          | -                          | -             | 5 TO 7     |
| -                          | -                          | 1                          | -             | 1.5 TO 2.5 |
| -                          | 1                          | -                          | 1             | 1.5 TO 2.5 |
| MIX FOR DRY STACK SERIES   |                            |                            |               |            |
| MORTAR                     | PORTLAND CEMENT OR BLENDED |                            |               | SAND       |
| TYPE S                     | CEMENT OR BLENDED          |                            |               |            |
| -                          | 3                          | 1/2 PARTS THINSET          | -             | 7          |
| -                          | 2                          | BONDING AGENT              | 1 PART LIME   | 7          |
| 3                          | -                          | BONDING AGENT              | -             | 7          |

\* MUST BE LATEX MODIFIED THINSET FOR EXTERIOR USE MEETING ANSI A 118.4

THE MORTAR BED CONSISTENCY MUST ALLOW MORTAR TO BE SQUEEZED OUT AROUND ALL EDGES OF THE VENEER UNIT TO ASSURE FULL BOND. ALL JOINTS MUST BE TOOLED

BONDING AGENT AND WATER (PRE-BLENDED 1:1) CONCRETE BONDING AGENT : CONCRETE BONDING AGENTS SHALL MEET THE REQUIREMENTS OF ASTM C-1094 OR ASTM C-492.

**WEATHER CONDITIONS :**  
IN HOT WEATHER CONDITIONS IT MAY BECOME NECESSARY TO MOISTEN THE WALL BEFORE APPLYING THE SETTING COAT. WEATHER CONDITIONS MAY ALSO REQUIRE MOISTENING THE BACK OF EACH STONE. THIS IS BEST DONE USING A FINE SPRAY OF WATER OR A NET BRUSH. THIS STEP IS IMPORTANT TO PREVENT EXCESSIVE ABSORPTION OF MOISTURE FROM THE MORTAR. APPLICATIONS MUST BE PROTECTED FROM FREEZING TEMPERATURES BY SHEETING THE WALL AS MORTAR WILL NOT SET UP PROPERLY UNDER SUCH CONDITIONS. DO NOT USE ANTI-FREEZE COMPOUNDS TO LOWER THE FREEZING POINT OF MORTAR.

APPLIED :  
PER CENTURION STONE VENEER INSTALLATION PROCEDURES.

NOT TO SCALE

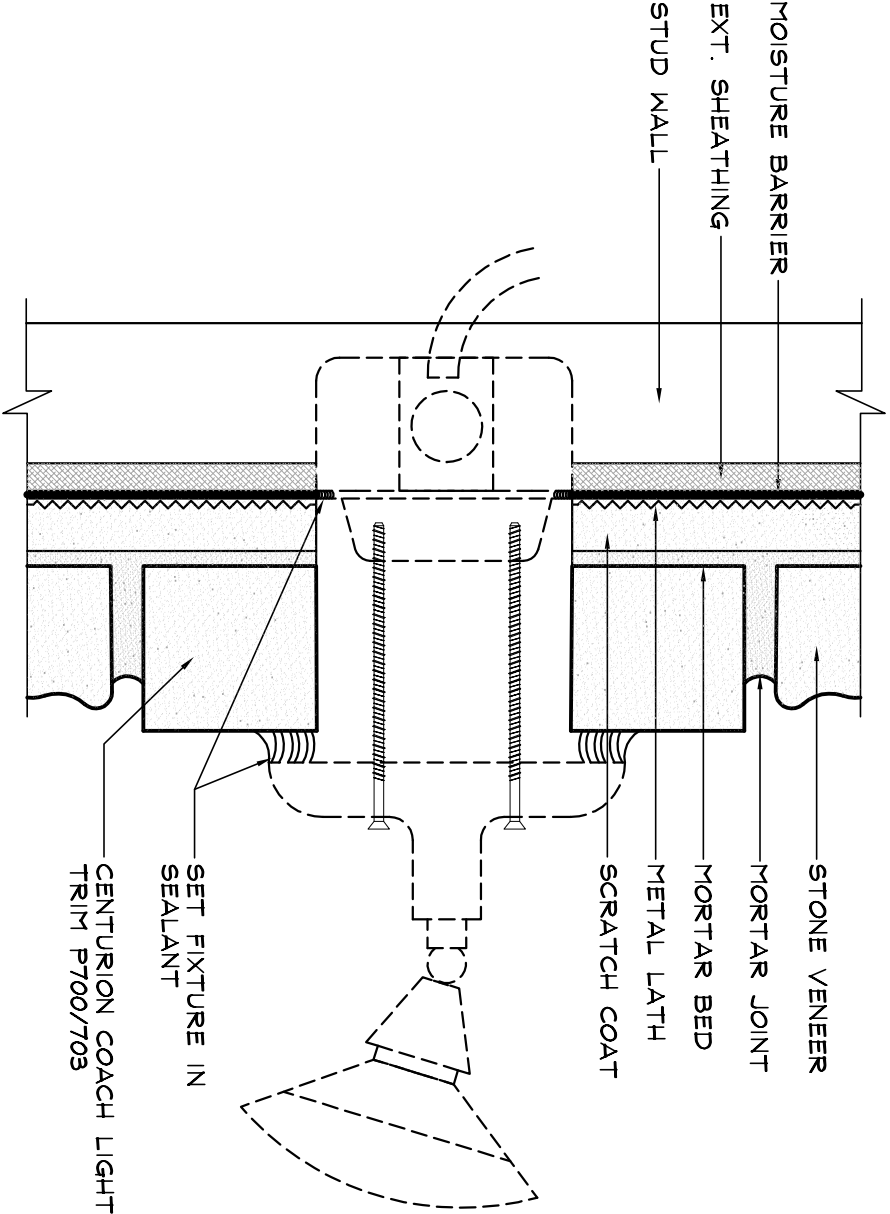


Centurion Products, Inc  
50 Van Buren Street  
Nashville, TN 37208  
www.centurionstone.com

TRANSITION STONE TO SIDING

M.O.3

COACH LIGHT TRIM P700/703



Specifications :

NOT TO SCALE



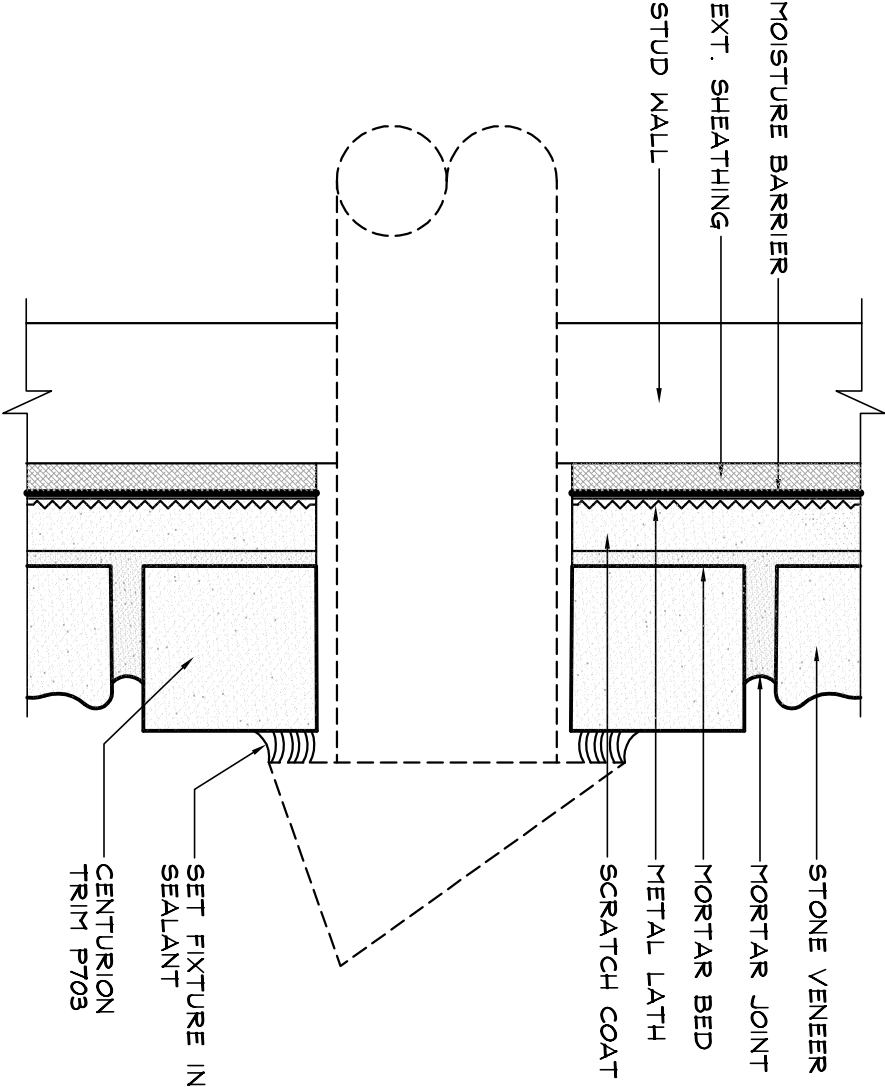
**CENTURION**  
STONE

Centurion Products, Inc  
50 Van Buren Street  
Nashville, TN 37208  
[www.centurionstone.com](http://www.centurionstone.com)

COACH LIGHT TRIM

M.0.4

COACH TRIM/DRYER VENT P703



Specifications :

NOT TO SCALE



**CENTURION**  
STONE

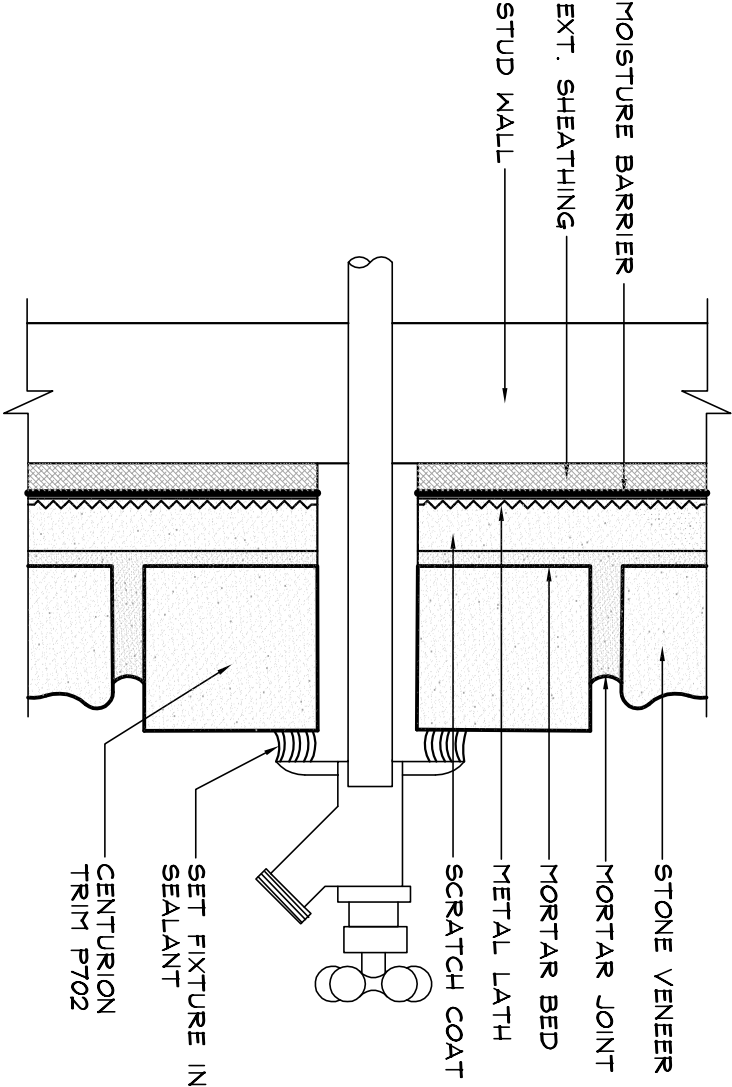
Centurion Products, Inc  
50 Van Buren Street  
Nashville, TN 37208  
[www.centurionstone.com](http://www.centurionstone.com)

COACH TRIM/DRYER VENT P703

M.O.5

Specifications :

WATER BIBB TRIM P702



NOT TO SCALE



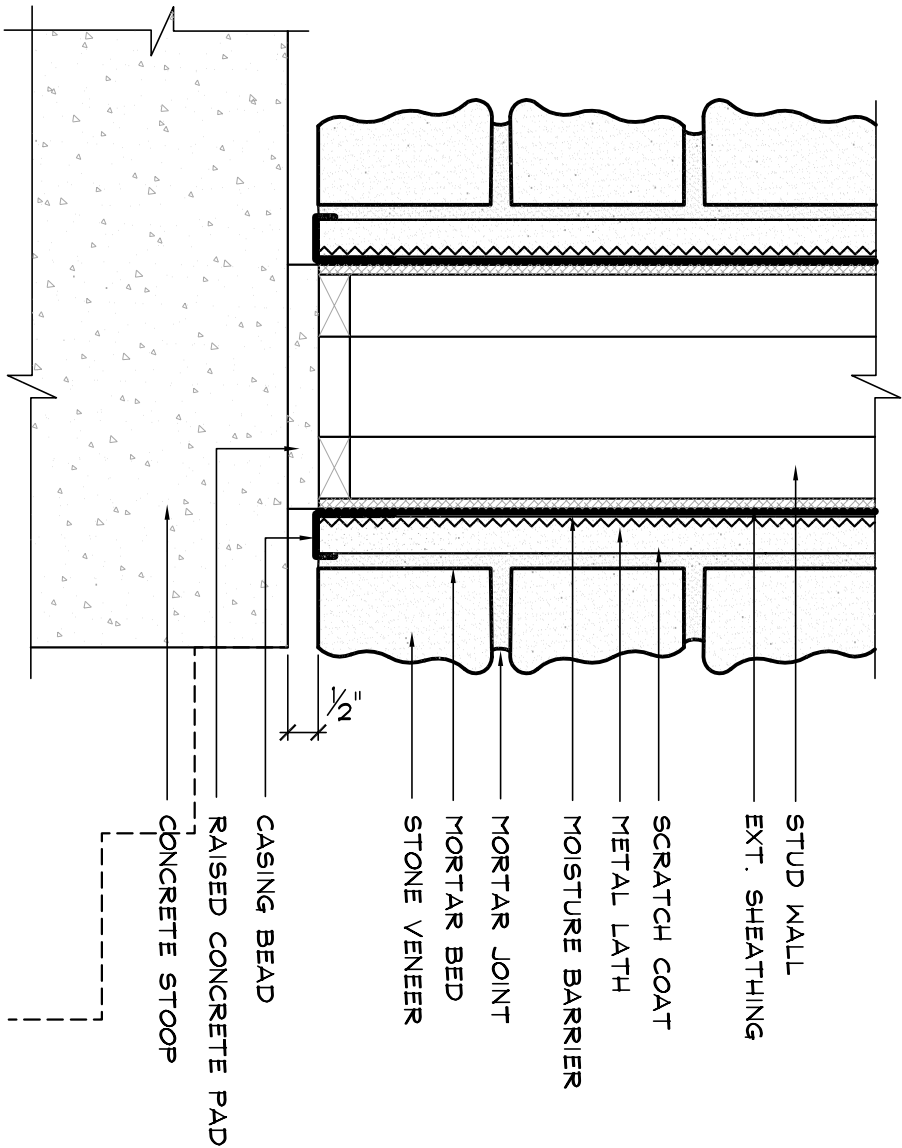
**CENTURION**  
STONE

Centurion Products, Inc  
50 Van Buren Street  
Nashville, TN 37208  
[www.centurionstone.com](http://www.centurionstone.com)

WATER BIBB TRIM P702

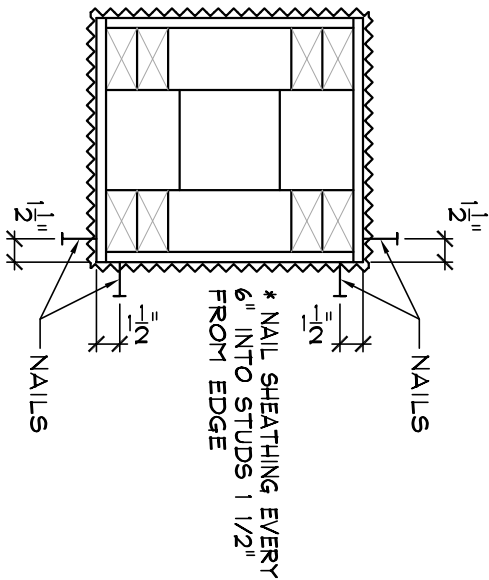
M.0.6

COLUMN CONSTRUCTION



Specifications :

NOTE :  
USE MIN. OF 2 STUDS ON EACH  
COLUMN CORNER AND ON ALL  
INSIDE/OUTSIDE CORNERS



\* NAIL LATH EVERY 6" DOWN EACH CORNER  
1 1/2" FROM EDGE WITH FASTENER PENETRATING  
MIN. OF 1" INTO STUD.  
\* LATH IS TURNED AROUND CORNERS  
(INSIDE/OUTSIDE) 16" AND KEPT TIGHT TO  
SHEATHING. IF RETURN IS LESS THAN 16"  
TURN LATH TO LONGEST POINT - DO NOT  
END LATH AT COLUMN CORNER.

NOT TO SCALE

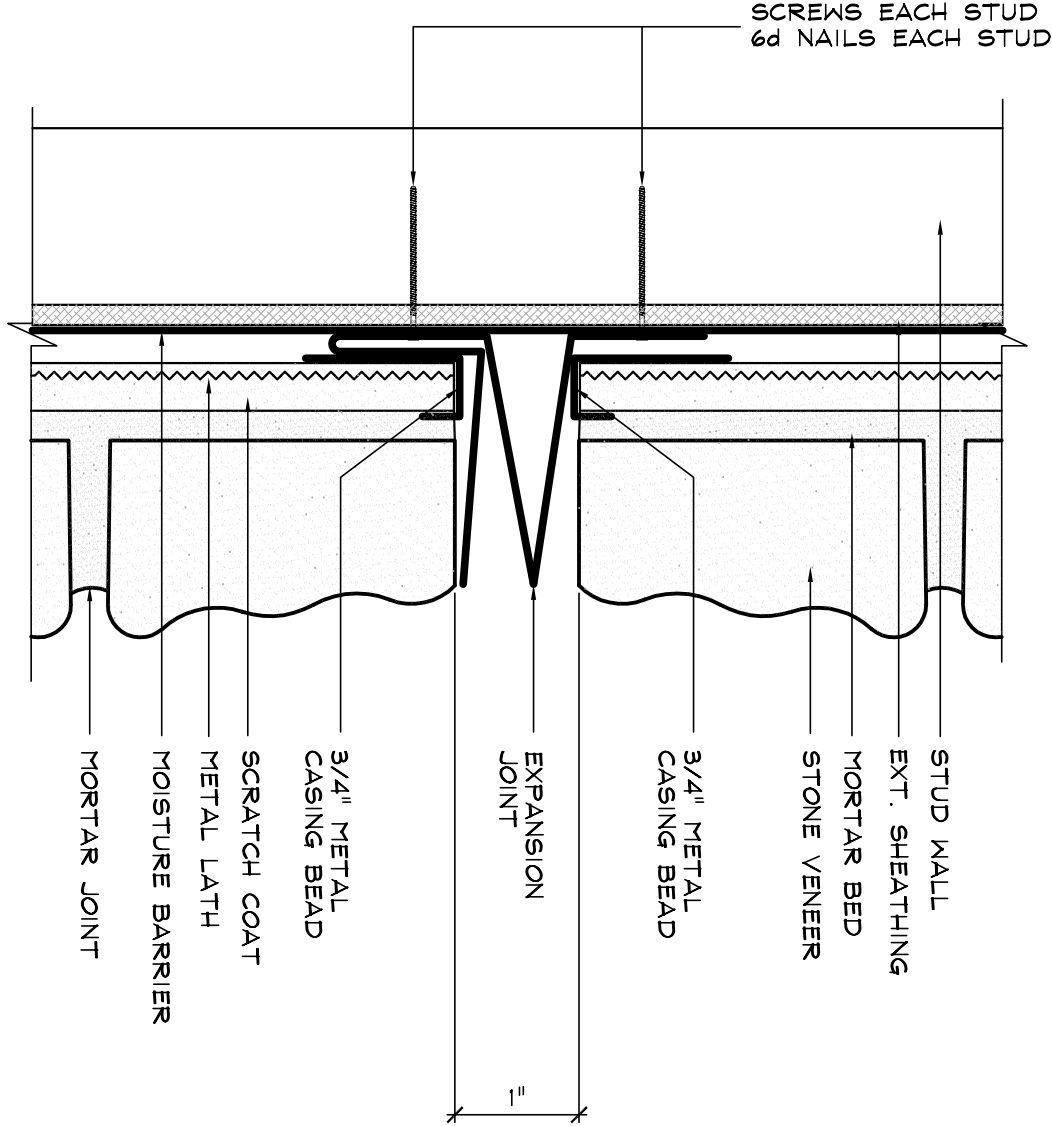


Century Products, Inc  
50 Van Buren Street  
Nashville, TN 37208  
[www.centurionstone.com](http://www.centurionstone.com)

COLUMN CONSTRUCTION

M.0.7

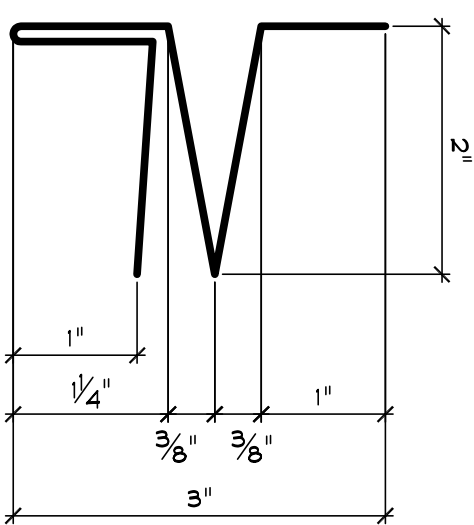
EXPANSION JOINT  
METAL FRAME / WOOD FRAME CONSTRUCTION



Specifications :

EXPANSION OR CONTROL JOINTS

TO LIMIT THE EFFECT OF DIFFERENTIAL MOVEMENT OF SUPPORTS AND MOVEMENT CAUSED BY TEMPERATURE CHANGE, SHRINKAGE, CREEP AND DEFLECTION, EXPANSION JOINTS MAY BE REQUIRED. IF REQUIRED, THEY MUST BE SPECIFIED BY THE ARCHITECT, DESIGNER OR STONE MANUFACTURER IN THAT ORDER.



NOT TO SCALE



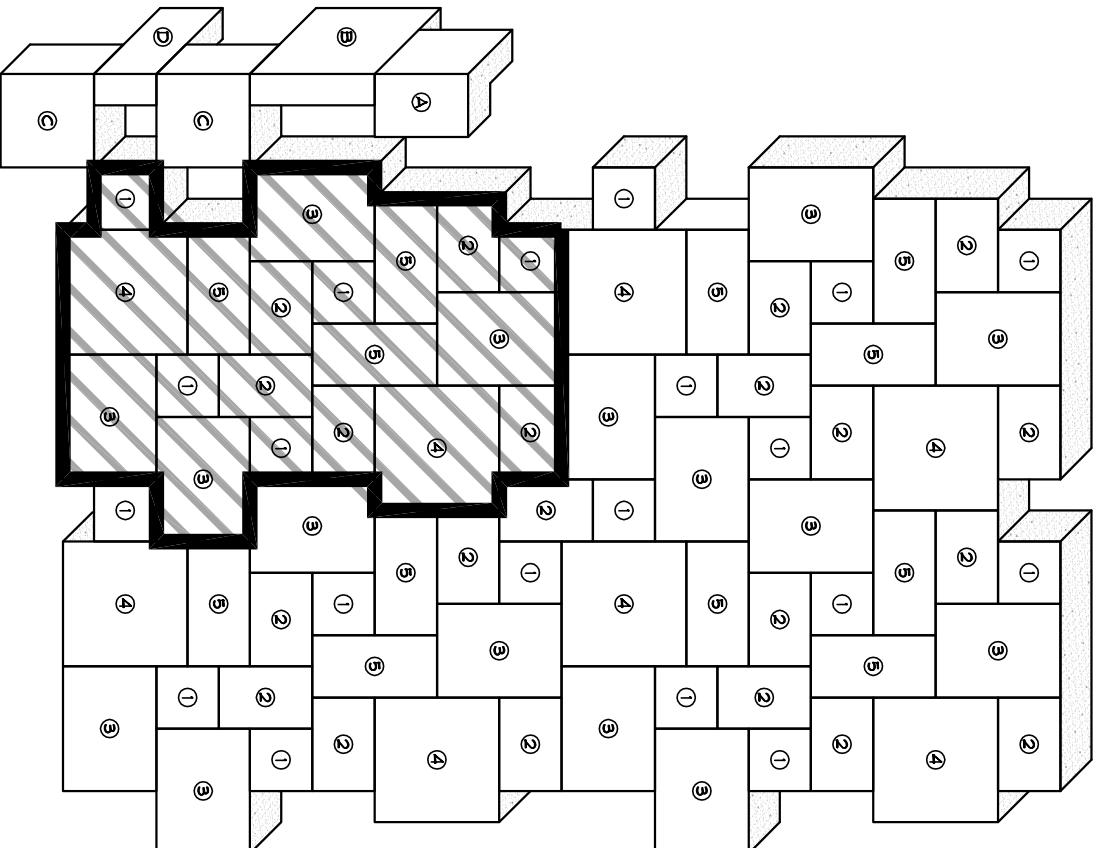
**Centurion**  
STONE

Centurion Products, Inc  
50 Van Buren Street  
Nashville, TN 37208  
[www.centurionstone.com](http://www.centurionstone.com)

EXPANSION JOINT

M.I.0.8

## CENTURION CASTLE ROCK LAYOUT



### Specifications :

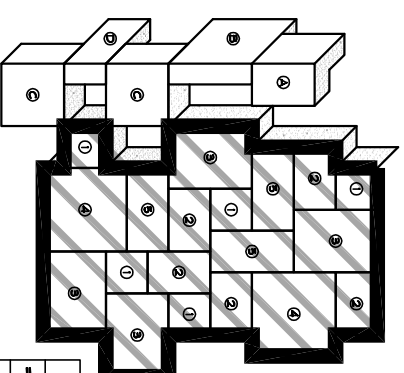
CAN BE INSTALLED IN RANDOM PATTERN OR REPEATING PATTERN FOR QUICK INSTALLATION WITH MIN. CUTTING

90 DEGREE CORNERS

AVERAGE THICKNESS OF ONE AND ONE FOURTH INCH.

PATTERN SIZED FOR A ONE HALF INCH MORTAR JOINT.

CONVENIENT, EASY TO HANDLE PACKAGING



| FLATS              |  |
|--------------------|--|
| =1 - 6x6 - 5 PCS   |  |
| =2 - 6x9 - 6 PCS   |  |
| =3 - 9x12 - 4 PCS  |  |
| =4 - 12x12 - 2 PCS |  |
| =5 - 6x12 - 3 PCS  |  |

| CORNER           |     | SIZES      | LIN.FT. |       | SQ.FT. | C TO F |
|------------------|-----|------------|---------|-------|--------|--------|
| #                | PCS |            | PCS     | TOTAL | TOTAL  | FACTOR |
| A                | 4   | 6"x6"x12"  | 12"     | 4'    | 3.2    |        |
| B                | 4   | 3"x12"x12" | 12"     | 4'    | 3.2    |        |
| C                | 8   | 3"x9"x9"   | 9"      | 6'    | 4.75   |        |
| D                | 4   | 3"x9"x6"   | 6"      | 2'    | 1.58   |        |
| APPROX. COVERAGE |     |            | 16'     |       | 12.73  | x.80   |

NOT TO SCALE



**CENTURION**  
STONE

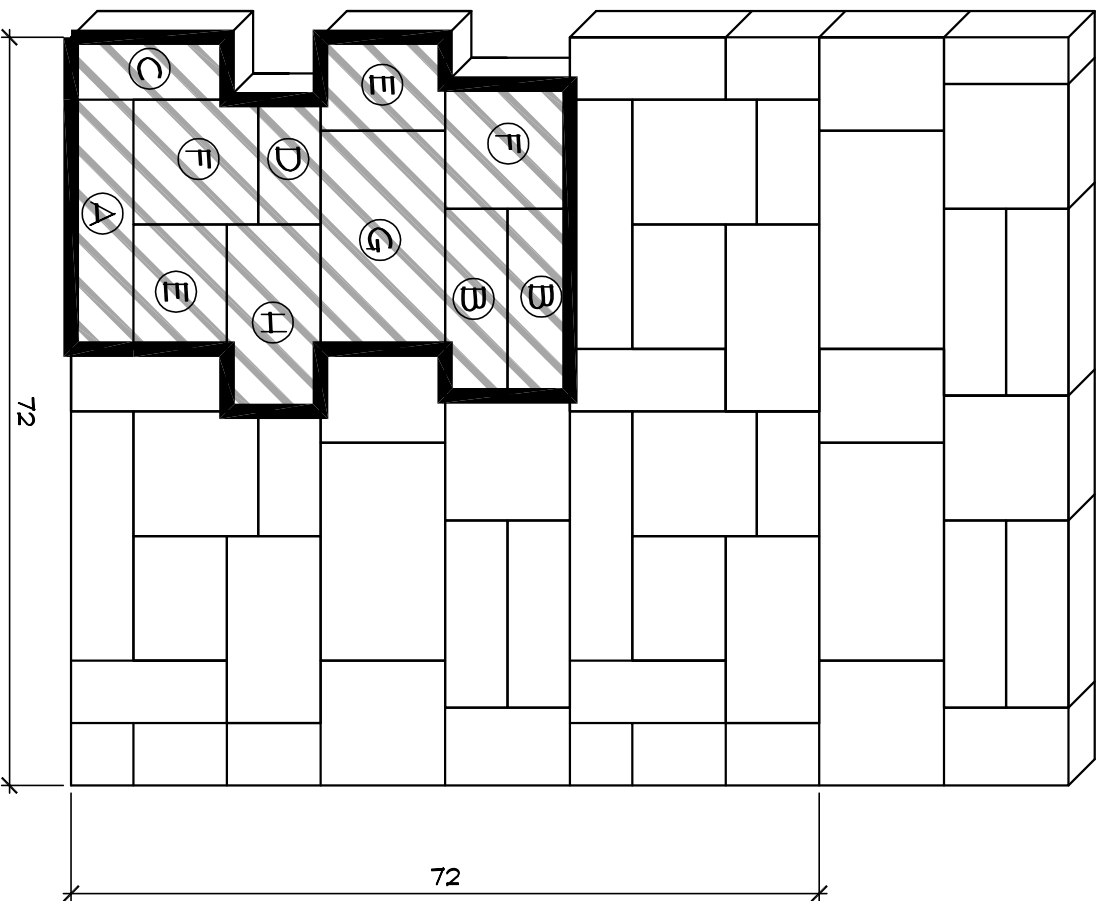
Centurion Products, Inc  
50 Van Buren Street  
Nashville, TN 37208  
[www.centurionstone.com](http://www.centurionstone.com)

CENTURION CASTLE ROCK

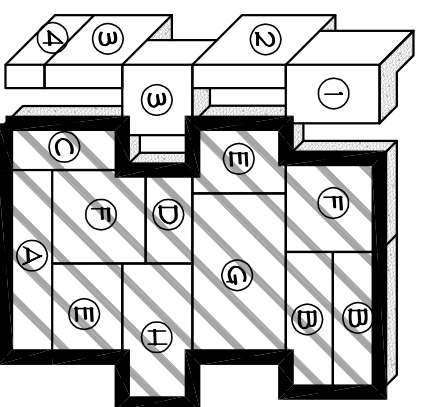
M.I.9



# BILTMORE INSTALLATION PATTERN LAYOUT



Specifications:  
SOME CUTTING MAY BE REQUIRED  
TO FIT PATTERN AROUND OPENINGS  
SUCH AS WINDOWS AND DOORS.



| FLATS PATTERN     |  |
|-------------------|--|
| A - 6x24 - 1 PCS  |  |
| B - 6x18 - 2 PCS  |  |
| C - 6x15 - 1 PCS  |  |
| D - 6x12 - 1 PCS  |  |
| E - 9x12 - 2 PCS  |  |
| F - 12x12 - 2 PCS |  |
| G - 12x21 - 1 PCS |  |
| H - 9x18 - 1 PCS  |  |

| CORNER PATTERN      |  |
|---------------------|--|
| #1 - 6x6x12 - 1 PCS |  |
| #2 - 3x9x12 - 1 PCS |  |
| #3 - 3x9x9 - 2 PCS  |  |
| #4 - 3x6x9 - 1 PCS  |  |

NOT TO SCALE



**CENTURION**  
STONE

Century Products, Inc  
50 Van Buren Street  
Nashville, TN 37208  
[www.centurionstone.com](http://www.centurionstone.com)

BILTMORE INSTALLATION PATTERN

M.O.10